

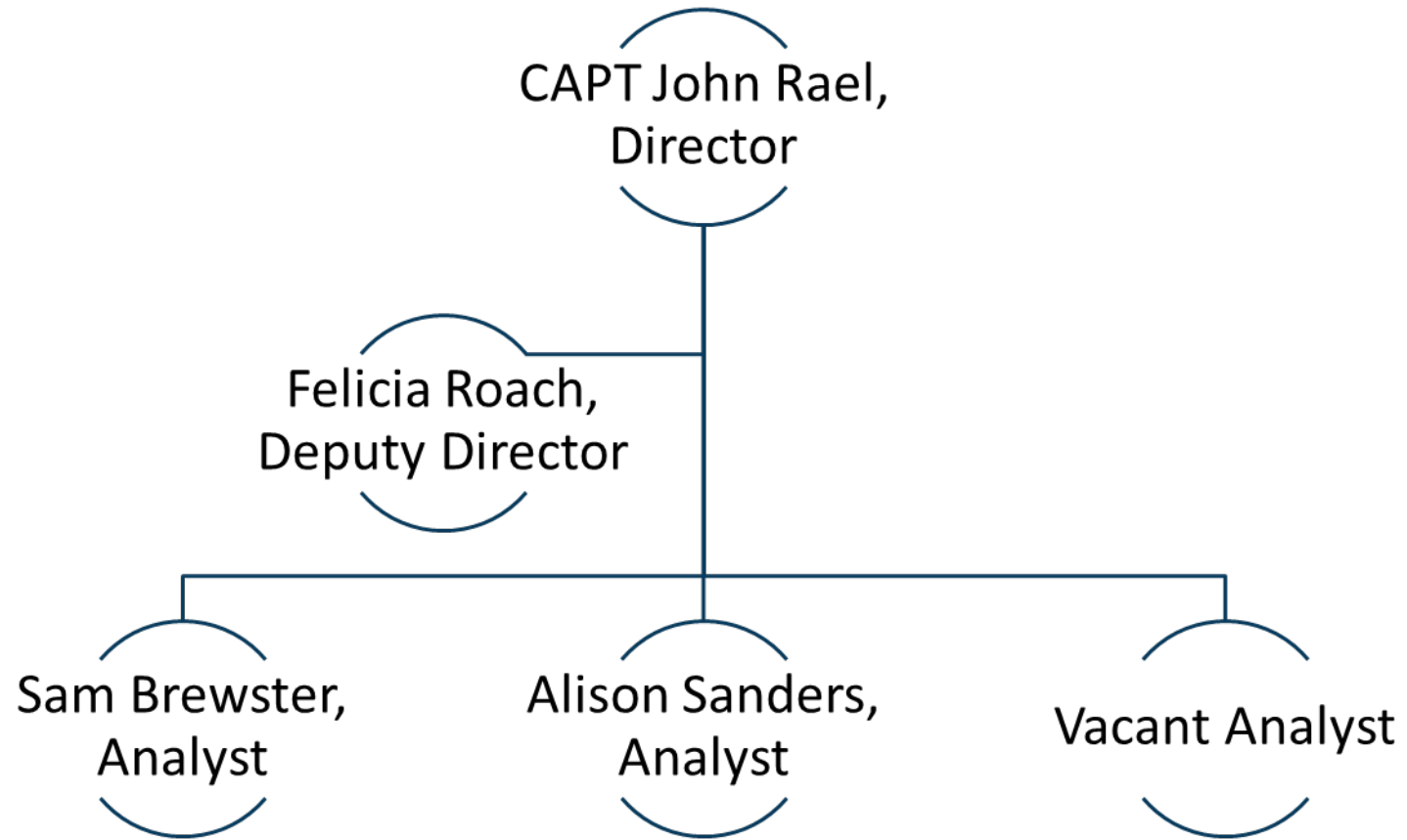
Indian Health Service

Partnership Meeting 2023
Atlanta, GA

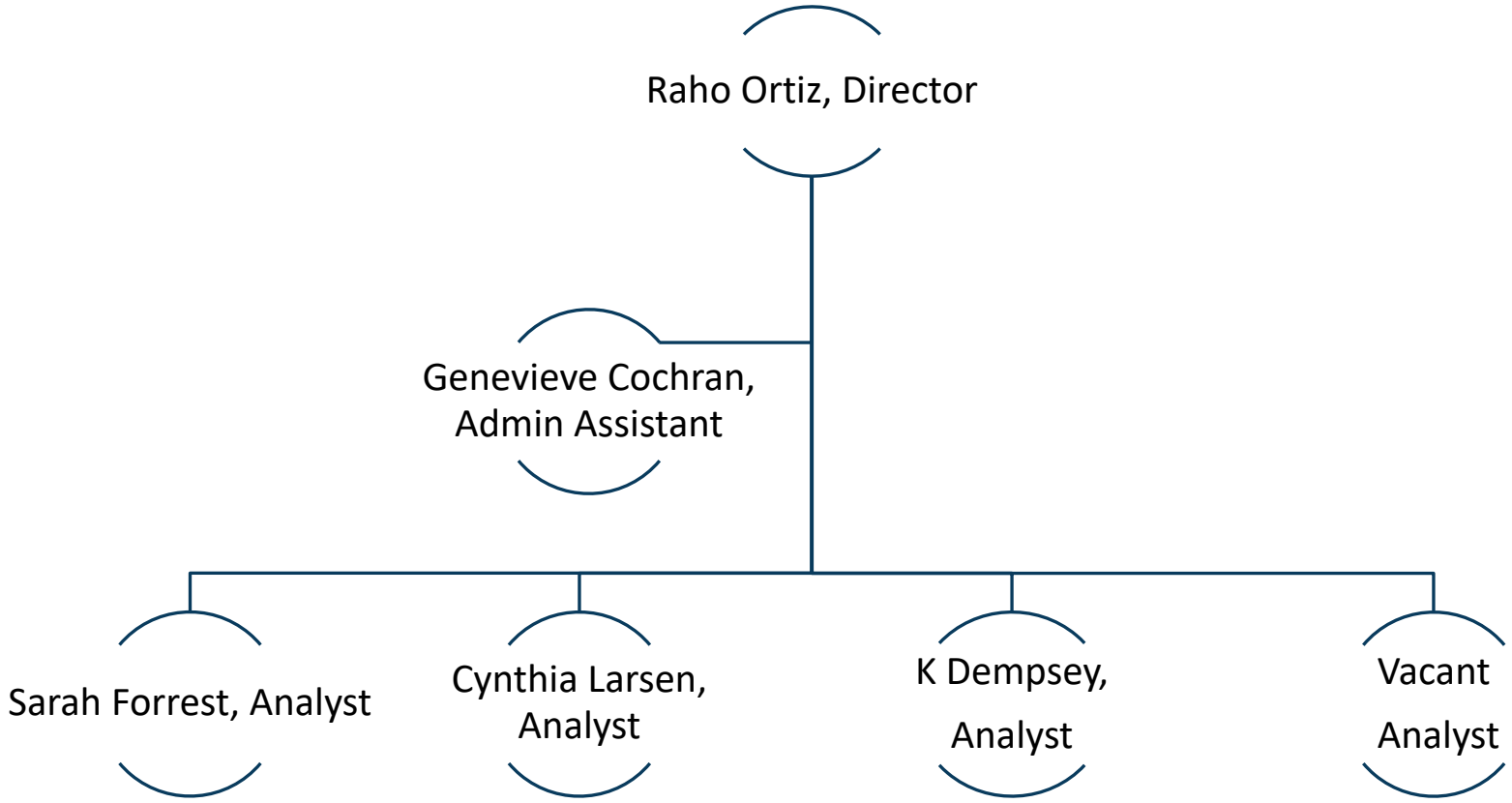
CAPT JOHN RAEL
DIRECTOR, ORAP
AUGUST 22, 2023



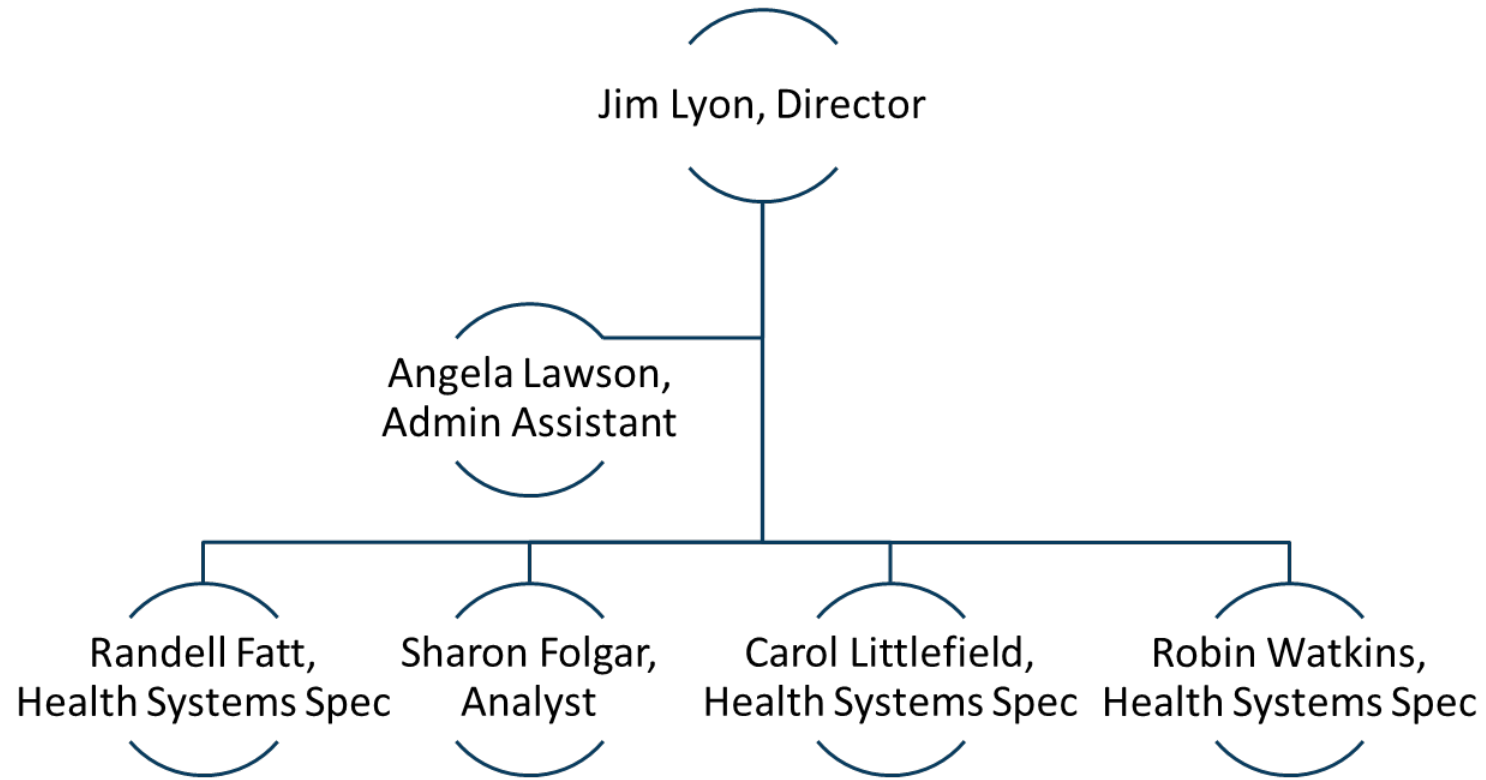
ORAP Director's Staff



Division of Business Office Enhancement (DBOE) Staff



Division of Contract Care (DCC) Staff



ORAP Hot Topics

A. Hot Topics

1. Several Directors Improvement Initiatives in PRC
 - a) Purchased Referred Care Delivery Area expansions
 - b) PRC Carryover
 - c) VA/PRC Billing for COVID
 - d) Entire PRC process improvement
2. Revenue Cycle Initiative
3. VA Reimbursement Agreement
4. ORAP's Role in HIT Modernization

ORAP Dashboards Landing Page

IHS ORAP National Reporting



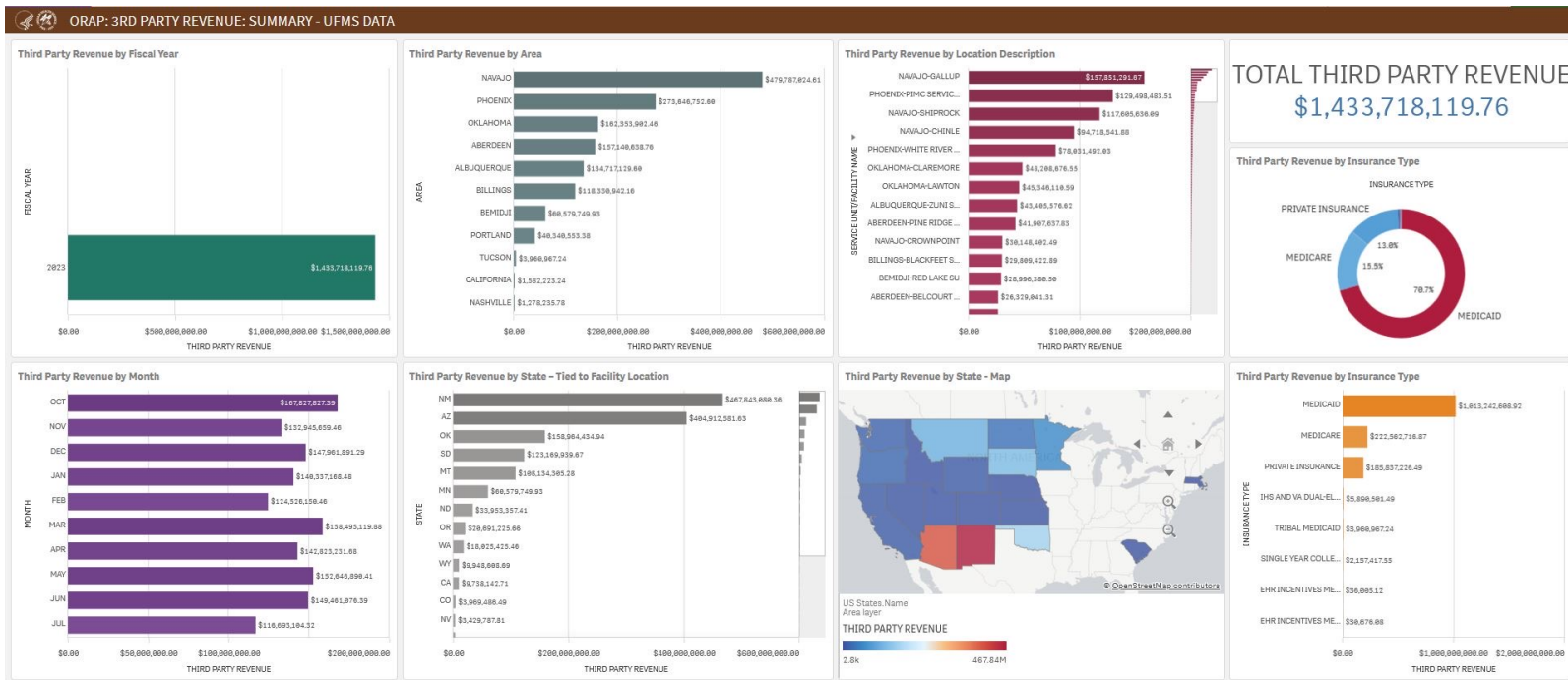
The Office of Resource Access and Partnerships (ORAP) serves as the lead office for the Business Office and Purchased Referred Care (formerly known as Contract Health Services) within the Indian Health Service (IHS). According to the current functional statement, ORAP is responsible for the following functions:

1. Provides Agency-wide leadership and consultation to the IHS direct operations and Tribal programs on IHS goals, objectives, policies, standards and priorities regarding the **operations and management** of the Business Office Services (BOS) and the Contract Health Services (CHS) programs;
2. Develops and implements **objectives, priorities, standards, measures and methodologies** for the BOS and CHS programs;
3. Manages and provides **leadership, advocacy, consultation and technical support** to Headquarters, IHS Areas and local levels on the full scope of BOS and CHS activities;
4. Represents the IHS at meetings and in discussions regarding **policy, legislation and other national issues**;
5. Provides **oversight and monitors** the BOS and CHS programs regarding compliance requirements, utilization reviews, revenue measures and reports;
6. Formulates and analyzes **BOS and CHS budgets** and prepares information for program budget presentations;
7. Collaborates and coordinates with IHS information technology staff and external organizations on **new technologies, applications and business practices**;
8. Develops resource opportunities and coordinates the BOS and CHS activities with other governmental and nongovernmental programs, **promoting optimum utilization** of all available health resources;
9. Participates in cross-cutting issues and processes including, but not limited to emergency preparedness/security, **budget formulation**, self-determination issues, and **resolution of audit findings** as may be needed and appropriate.

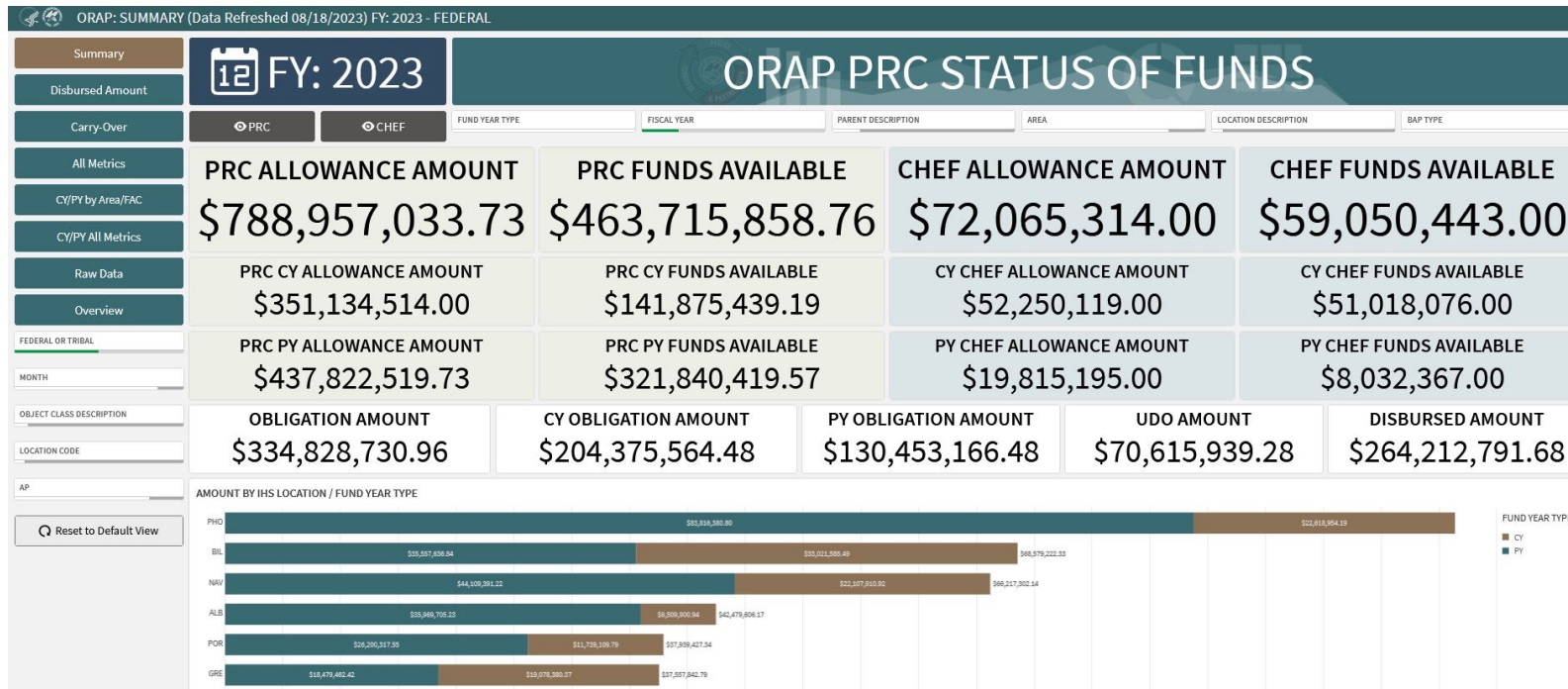
 → Enter ORAP 3RD PARTY REVENUE Dashboard - UFMS Data	 → Enter ORAP ALTERNATE RESOURCES Dashboard	 → Enter ORAP PRC STATUS OF FUNDS Dashboard	 → Enter FINANCIAL ACCOUNTS Dashboard
 → Enter ORAP ENCOUNTERS Dashboard	 → Enter ORAP RIGHT OF RECOVERY Dashboard - RPMS Data	 REVENUE CYCLE Dashboard - Coming Soon	



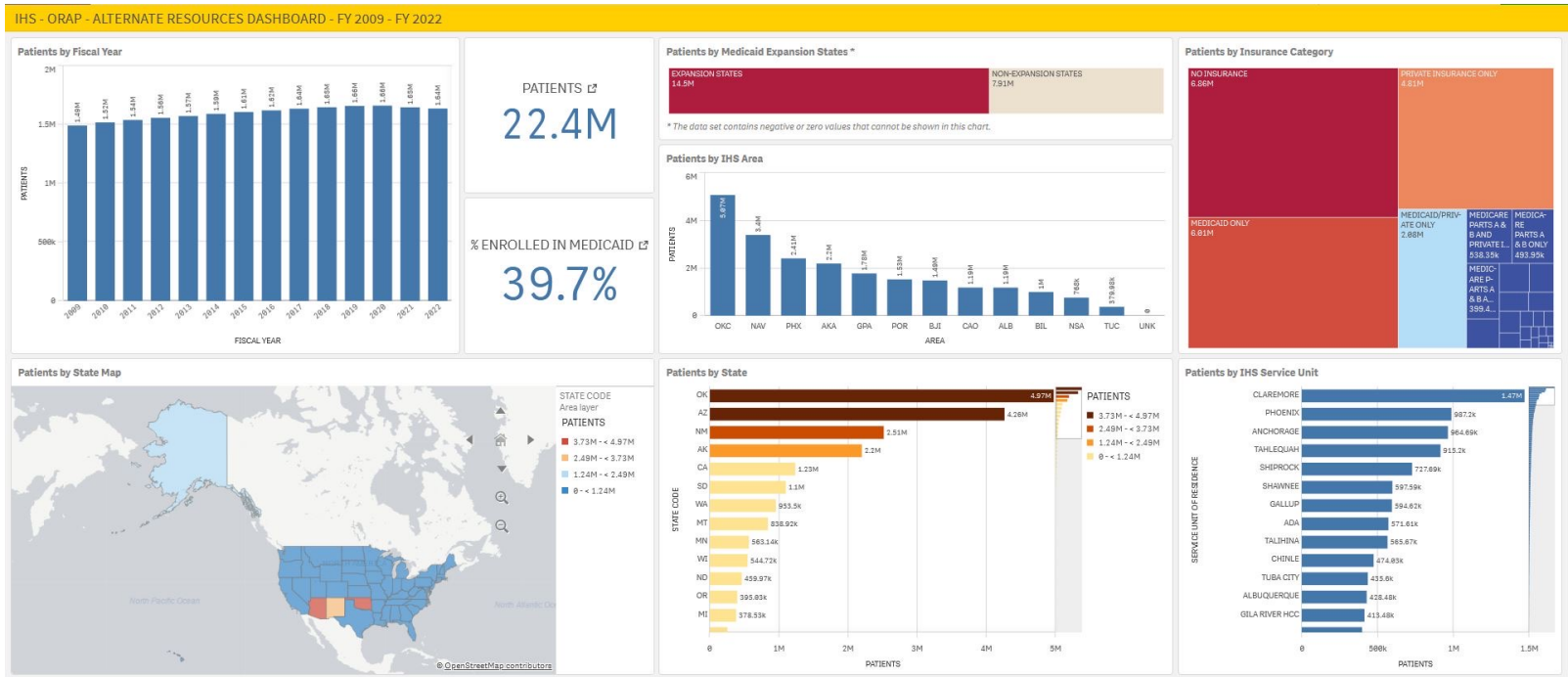
3rd Party Revenue Dashboard



ORAP PRC Status of Funds



Alternate Resources Dashboard



ORAP Financial Accounts

ORAP STATUS OF FUNDS - Summary																								
Filters		H & HC - CY vs PY - J942608				Direct Ops - CY vs PY - J942418				Total - Services Account - CY vs PY				Fiscal Intermediary - CY vs PY										
Data last refreshed on 8/18/2023		Funds Available 941.4k _{786.1k} _{py}				Funds Available 358.6k _{557k} _{py}				Funds Available 1.3M _{1.34M} _{py}				Funds Available 515.5k _{171.3k} _{py}										
Disbursement		Quality Assurance - CY vs PY				Undistributed Reserve - CY vs PY				New Tribes - CY vs PY				CHEF - CY vs PY										
Oblig., Com., Disburs.		Funds Available 439.4k _{4.19M} _{py}				Funds Available 577.5k _{7.07M} _{py}				Funds Available 1.1M _{8.32M} _{py}				Funds Available 40.75M _{11.44M} _{py}										
ORAP Accounts - Summary																								
Service Act/PRC	Fiscal Year	Fund Available Year	BAP Description	Budget Activity Program	CAN	Location Description	Location	Allowance	Funds Available	Obligations	Unobligated	Commitments	Disbursements	Delivered										
Totals															313,842,593	712,276,424	216,538,759	97,311,744	28,885,628	211,983,852	-136,837			
Service Account	Current Year	23/24	DIRECT OPS	7118940640	J942418	OFFICE OF RESOURCE ACCESS AND PARTNERSHIP (ORAP)	94184MDA2080...	1,418,526	358,598	1,859,936	358,598	0	995,868	64,069										
Service Account	Current Year	23/24	HOSPITALS & HEALTH CLINICS	7108940181	J942608	COLLECTION & BILLING SYSTEM	94184MDA2080...	1,611,456	941,418	678,032	941,418	0	339,703	14,434										
Service Account	Prior Year	22/23	DIRECT OPS	7118940640	J94PY92	OFFICE OF RESOURCE ACCESS AND PARTNERSHIP (ORAP) - DO-PY CAN	94184MDA2080...	1,734,758	557,885	1,177,445	557,885	0	1,173,591	0										
Service Account	Prior Year	22/23	HOSPITALS & HEALTH CLINICS	7108940181	J94PY88	COLLECTION & BILLING SYSTEM-ORAP-PY CAN	94184MDA2080...	2,253,643	786,868	1,467,575	786,868	0	735,694	0										
PRC Account	Current Year	X - 23/24	CHEF	7124940111	J9487CC	CATASTROPHIC HEALTH EMERGENCY FUND (CHEF)	94184MDA2080...	48,758,898	48,758,898	0	48,758,898	0	0	0										
PRC Account	Current Year	X - 23/24	PRC	7118940286	CY New Tribes	PRC NEW TRIBES	94184MDA2238...	1,104,112	1,104,112	0	1,104,112	0	0	0										
PRC Account	Current Year	X - 23/24	PRC	7118940286	J948K11	PRC FISCAL INTERMEDIARY	94184MDA2248...	15,515,523	515,523	0	15,515,523	15,000,000	0	0										
PRC Account	Current Year	X - 23/24	PRC	7118940286	J948K12	PRC QUALITY ASSURANCE	94184MDA2218...	731,381	439,396	286,365	525,816	85,628	18,165	761										
PRC Account	Current Year	X - 23/24	PRC	7118940286	J948K13	PRC UNDISTRIBUTED RESERVE	94184MDA2228...	1,287,848	577,488	718,388	577,488	0	673,187	37,193										
PRC Account	Prior Year	X	CHEF	7124940111	J9487CB	CATASTROPHIC HEALTH EMERGENCY FUND (CHEF)	94184MDA2080...	11,441,521	11,441,521	0	11,441,521	0	0	0										
PRC Account	Prior Year	X	PRC	7118940286	J948H11	PRC FISCAL INTERMEDIARY	94184MDA2248...	285,136,387	28,662	288,115,645	5,870,662	5,008,088	197,381,449	-239,465										
PRC Account	Prior Year	X	PRC	7118940286	J948H11	PRC FISCAL INTERMEDIARY WITHHELD	94184MDA2241...	158,658	158,658	0	158,658	0	0	0										
PRC Account	Prior Year	X	PRC	7118940286	J948H12	PRC QUALITY ASSURANCE	94184MDA2218...	7855,897	4198,624	3,764,473	4,188,624	0	3,369,108	13,238										
PRC Account	Prior Year	X	PRC	7118940286	J948H13	PRC UNDISTRIBUTED RESERVE	94184MDA2228...	13,968,993	7,878,182	6,518,891	7,878,182	0	6,845,979	-27,188										
PRC Account	Prior Year	X	PRC	7118940286	PRC DOC	PRC DIVISION OF CONTRACT CARE	94184MDA2280...	439,717	0	439,717	0	0	439,717	0										
PRC Account	Prior Year	X	PRC	7118940286	PY New Tribes	PRC NEW TRIBES	94184MDA2238...	8,322,577	8,322,577	0	8,322,577	0	0	0										



ORAP Encounter Dashboard



Revenue Cycle Dashboard

