

ENVIRONMENTAL SCAN OF ANNUAL REPORTS ON RESEARCH ACTIVITY IN PSYCHIATRY

AUTHOR & AFFILIATION

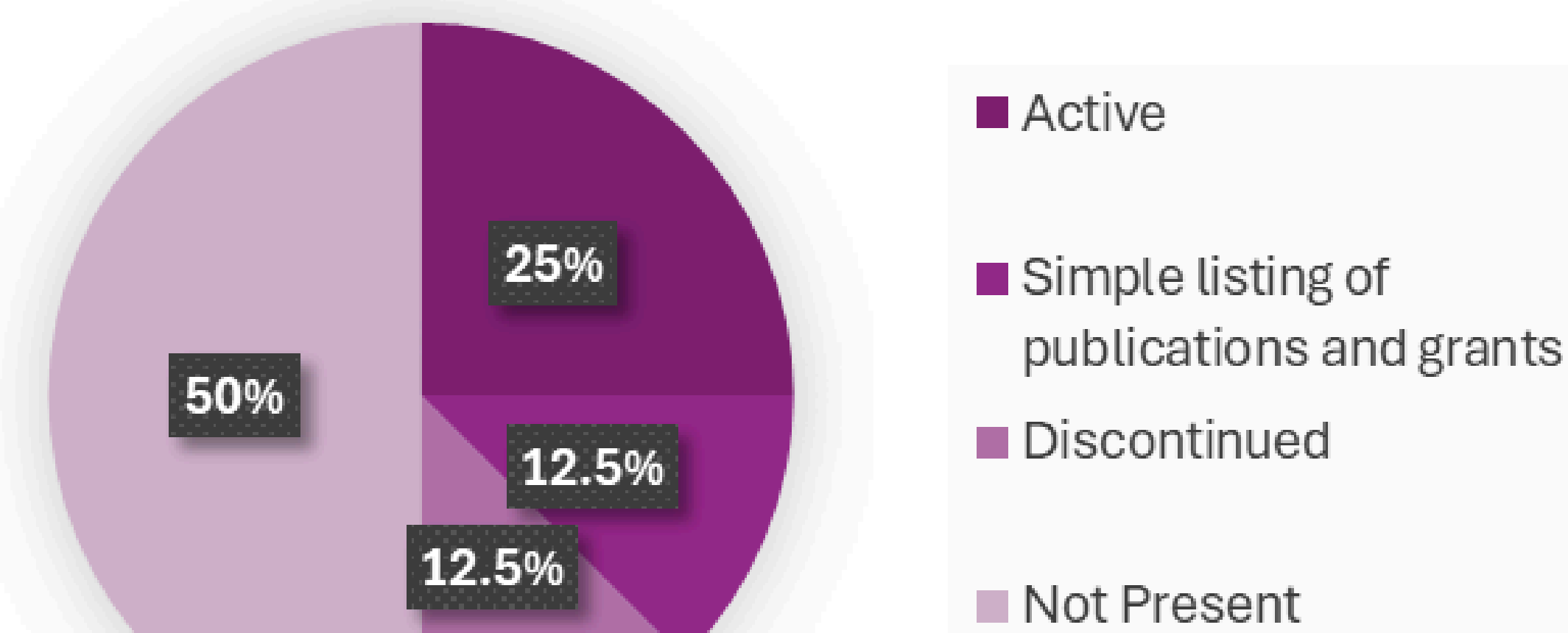
Leslie Dema, Research Office Administrative Coordinator, McMaster Department of Psychiatry and Behavioural Neurosciences



QUESTION:

My department does not currently produce an annual report featuring research activities. I conducted an environmental scan of reports found at other related institutions to observe the frequency of these reports and review which elements are featured in them.

Presence of Research Annual Reports at 16 Canadian Psychiatry Department Websites



DISCUSSION

There is no universally accepted set of data that is reported in annual reports featuring research activities in these institutions and departments. In the chart provided I've highlighted some of the most common features present. In deciding what to highlight it is important to consider what sort of statistics can be readily obtained in a given program, and what statistics can be easily gathered from one year to the next by different staff members. One should also consider the audience of the report.

ANALYSIS

Features Present in the Research Annual Reports of three types of institutions: Canadian Psychiatry Departments, Hospital Research Institutes, McMaster Psychiatry Research Centres.

Green cells indicate that a feature is present.

	U of Toronto Psychiatry	U of Calgary Psychiatry	Dalhousie U Psychiatry	U de Montréal Psychiatrie	CAMH	Research Institute of SJHH	Offord Centre	Peter Borris Centre
Total or Annual Research Funding in \$	Green	Green	Green	Green	Green	Green	Green	Green
Breakdown of Funding by Source	Green	Green	Green	Green	Green	Green	Green	Green
Listing of Grants by Title	Green	Green	Green	Green	Green	Green	Green	Green
Number of PIs/Researchers/Faculty	Green	Green	Green	Green	Green	Green	Green	Green
Faculty Profiles	Green	Green	Green	Green	Green	Green	Green	Green
Project Highlights	Green	Green	Green	Green	Green	Green	Green	Green
Number of Publications	Green	Green	Green	Green	Green	Green	Green	Green

FURTHER CONSIDERATIONS AND POTENTIAL CHALLENGES

- How should funding stats be reported: total active portfolio or new funds in the past year? (The labelling of data in many reports was very unclear on this.)
- If researchers have multiple appointments how should one determine which publications are attributable to this research centre?
- Choose key metrics carefully: less ambitious reports may be easier to maintain and have more longevity. A number of institutions have discontinued reporting.

Core Members

Dr. Andrea Gonzalez

Dr. Andrea Gonzalez is an Associate Professor in the Department of Psychiatry and Behavioural Neurosciences, with cross-appointments in the Department of Psychology, the Neuroscience Graduate Program, and the Department of Health Research Methods, Evidence and Impact at McMaster University. She is an Editorial Board Member for the Journal of Clinical Research, Child Abuse & Neglect and Child Maltreatment and holds a Tier 1 Canada Research Chair in Family Health and Preventive Interventions. Dr. Gonzalez's research program focuses on the developmental consequences of early life adversity, the impact of traumatic experiences on brain development, behavioural outcomes and health, the intergenerational transmission of risk, and developing and evaluating evidence-based preventive interventions.

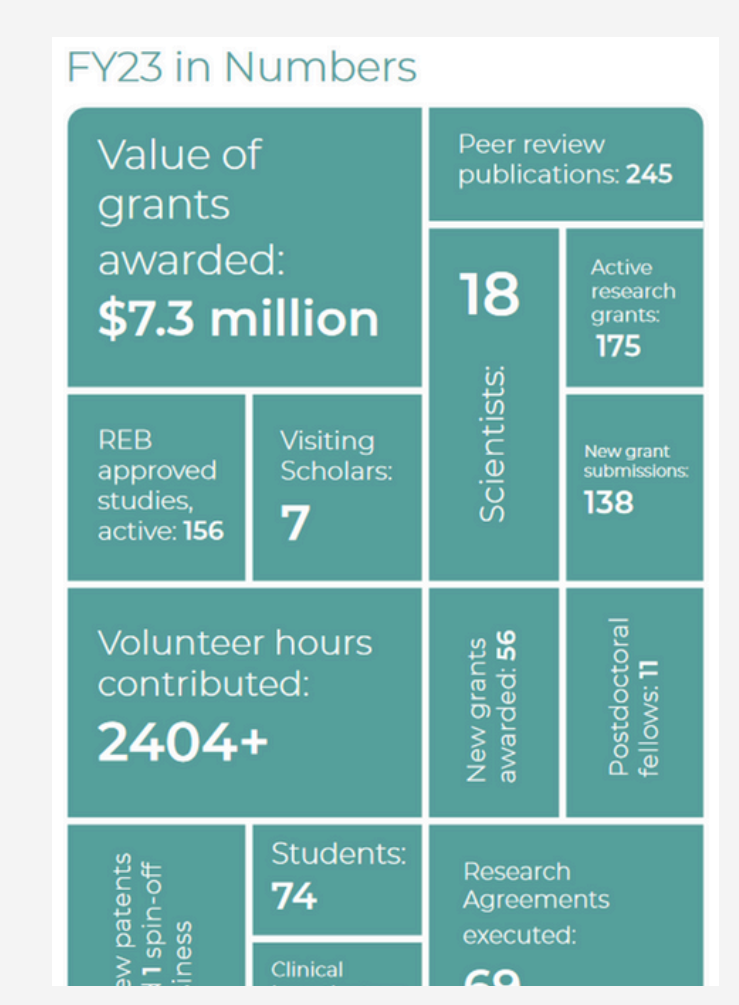
Dr. Ellen Lipman

Dr. Ellen Lipman is a child psychiatrist and Professor in the Division of Child Psychiatry, Department of Psychiatry and Behavioural Neurosciences, McMaster University. She is currently Associate Chair Education in the Department of Psychiatry and Behavioural Neurosciences and Chief of the Department of Child Psychiatry at McMaster Children's Hospital, Hamilton Health Sciences. Her clinical work includes consultation to supported services at the Child and Youth Mental Health Program, McMaster Children's Hospital. Dr. Lipman's main research interests are in the areas of child and youth mental health problems, mental health services, disadvantaged children/families and effectiveness studies.

Selected Active Research Projects

- Intervening in the Acute Management for Suicidal Adolescents and Families in the Emergency department (SAM SAFE)
- Pain-Capability, Comprehensive Medication Evaluation of an Innovative Acute Pediatric Mental Health and Addiction Care Bundle
- Implementation of a Youth Suicide Prevention Intervention: Learning How to Expect Helplessly

Reports from hospital research institutions and research centres were more likely to include faculty profiles and research highlights—presumably as this sort of storytelling is more impactful in terms of soliciting future donations from funders.



University departments tended to take a more "by the numbers" approach.