

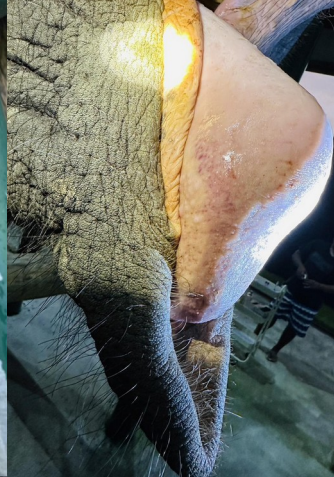


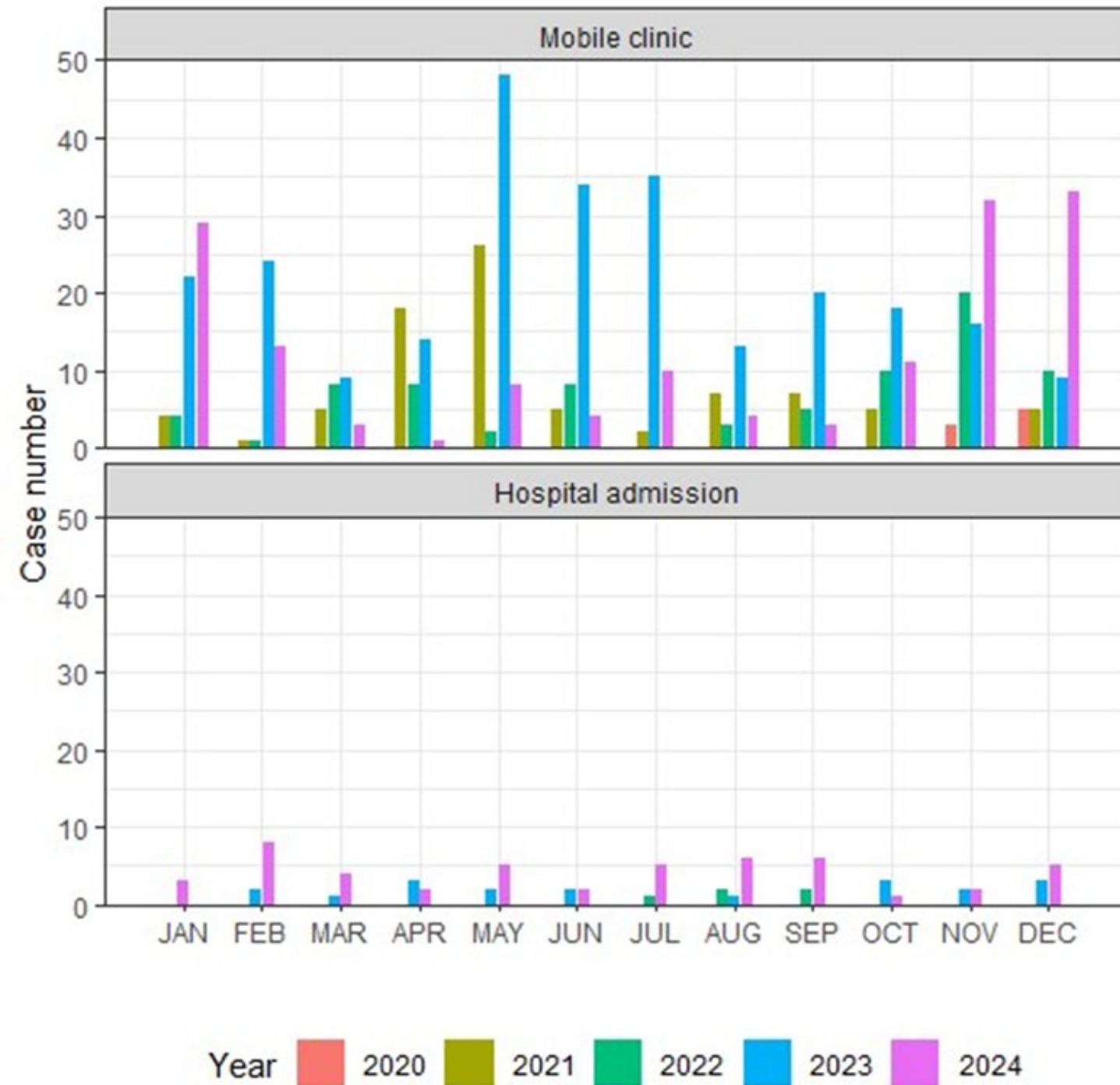
Southern Thailand  
**ELEPHANT**  
**FOUNDATION**



STEF Veterinary  
Centre







**2020 ( 5 cases)**  
mobile 5 cases

**2021 (129 cases)**  
mobile 129 cases

**2022 (99 cases)**  
hospital 2 cases  
mobile 97 cases

**2023 (294 cases)**  
hospital 31 cases  
mobile 263 cases

**2024 (204 cases)**  
hospital 50 cases  
mobile 154 cases



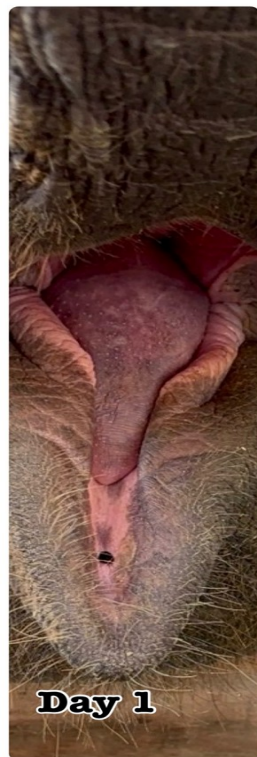
# January- November 2025

**-Hospital admission = 68 cases**

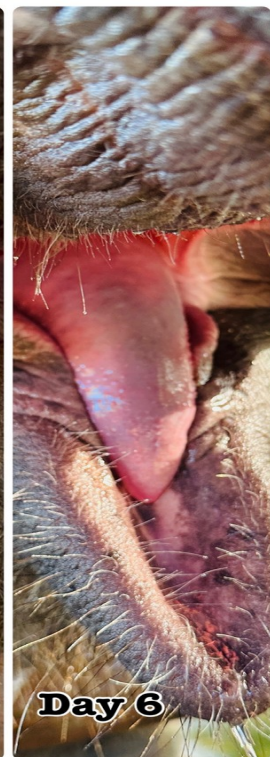
- Non-infectious (4)
- GI (43)
- Musculoskeletal (5)
- Ocular (7)
- Foot (1)
- Malnutrition and weakness (1)
- Obstetric problem (1)
- Serious infection disease (4)

**-Mobile clinic = 222 cases**

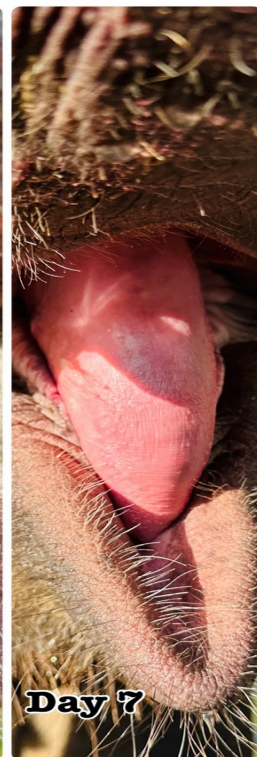
- Non-infectious (40)
- GI (43)
- Malnutrition and weakness (6)
- Musculoskeletal (16)
- Ocular (25)
- Parasite (49)
- Foot (1)



Day 1



Day 6



Day 7





Southern Thailand  
**ELEPHANT  
FOUNDATION**

**STEF** Veterinary  
Centre



[www.southernthailande象ant.or](http://www.southernthailande象ant.or)

g