

# Natural Areas and Visitor Management

البحر الأحمر الدولية  
Red Sea Global



23- April -2026

**Global Sustainable Tourism Council Conference**

**Phuket- Thailand**

*For people and planet.*



# 01 RED SEA GLOBAL

Who We Are

---

What we do

---

Why We Do It

---

Red Sea Global (RSG) is a multi-project,  
vertically integrated developer pioneering

# Regenerative tourism *and* sustainable development *in* Saudi Arabia *and beyond.*



PIF  
صندوق  
الاستثمارات العامة

رؤية  
VISION  
2030  
المملكة العربية السعودية  
KINGDOM OF SAUDI ARABIA

Backed by Saudi Arabia's Public  
Investment Fund (PIF).

Our work is central to Vision 2030, driving  
economic diversification and positioning  
tourism to contribute 10% of Saudi Arabia's  
GDP by 2030.

# The Red Sea and AMAALA destinations are the world's most ambitious tourism and hospitality developments

Both destinations, born out of Vision 2030, are positioning Saudi Arabia on the global tourism map



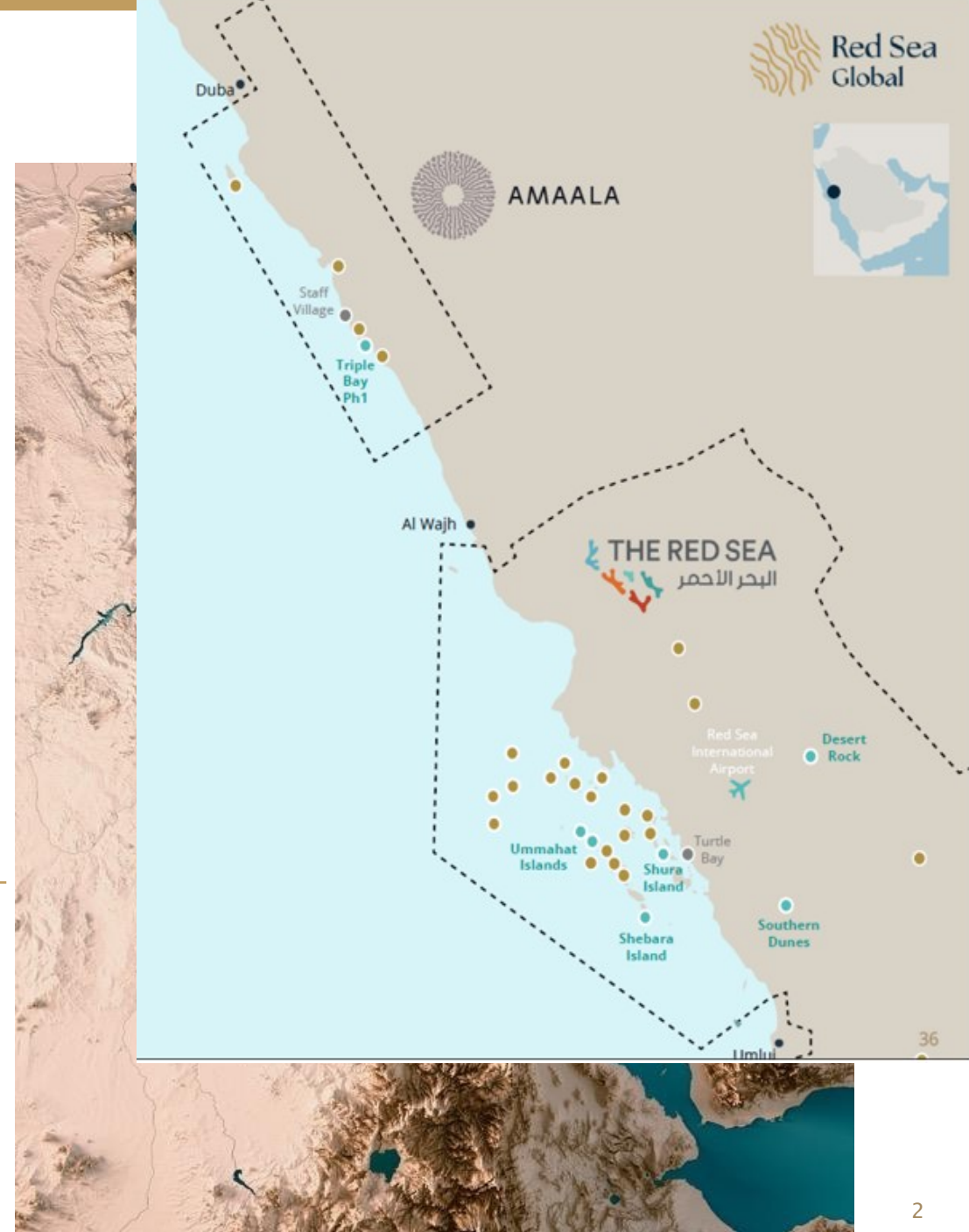
Setting new standards in regenerative development



Two luxury destinations, created around one of the world's last hidden natural treasures



Positioning Saudi Arabia on the global tourism map



# THE RED SEA

## البحر الأحمر

Phase I

- 5** Islands developed
- 2** Inland sites
- 16** hotels – 3,000 keys
- 400** Residential Units

### BAREFOOT LUXURY

-   
Active
-   
Mountain
-   
Culture
-   
Wellness
-   
Desert
-   
Beach

## The Red Sea Phase One

**The St. Regis Red Sea Resort**  
90 keys



**Shura Island**  
2,241 keys



**Red Sea International Airport**



**Desert Rock**  
64 keys





**Nujuma, a Ritz-Carlton Reserve**  
63 keys



**Shebara resort**  
73 keys

**Six Senses Southern Dunes**  
76 keys



-  Island assets and infrastructure
-  Inland assets and infrastructure

Map labels include: Shura Road, Nursery, Waste Management Center, Main Jetty Road, Construction Village Housing, Concrete Batching Plant & QA/QC Testing Lab, Mainland Jetty, Turtle Bay Hotel, Management Residential (8 Buildings), Management Residential (10 Buildings), Management Office, Villas & Townhouses, Studio Apartments, Workers' Accommodation (Z-Types), Utilities & Infrastructure, Base Camp, South Jetty, and SWRO Plant.

# Shura Island

ROSEWOOD  
HOTELS & RESORTS



SLS  
HOTEL & RESIDENCES



INTERCONTINENTAL  
HOTELS & RESORTS



RAFFLES  
HOTELS & RESORTS

Golf Villas

Golf Clubhouse  
Golf Course

Jumeirah  
HOTELS & RESORTS  
STAY DIFFERENT™

MIRAVAL

Fairmont  
HOTELS & RESORTS

GRAND  
HYATT

FAENA

EDITION

FOUR SEASONS

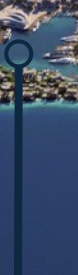




# AMAALA



THE RITZ-CARLTON



EQUINOX  
HOTELS



NAMMOS  
HOTELS & RESORTS



FOUR SEASONS



SIX SENSES



ROSEWOOD  
HOTELS & RESORTS



CLINIQUE  
LA PRAIRIE

SWITZERLAND



JAYASOM

كوراليوم  
Corallium

AMAALA  
Yacht Club

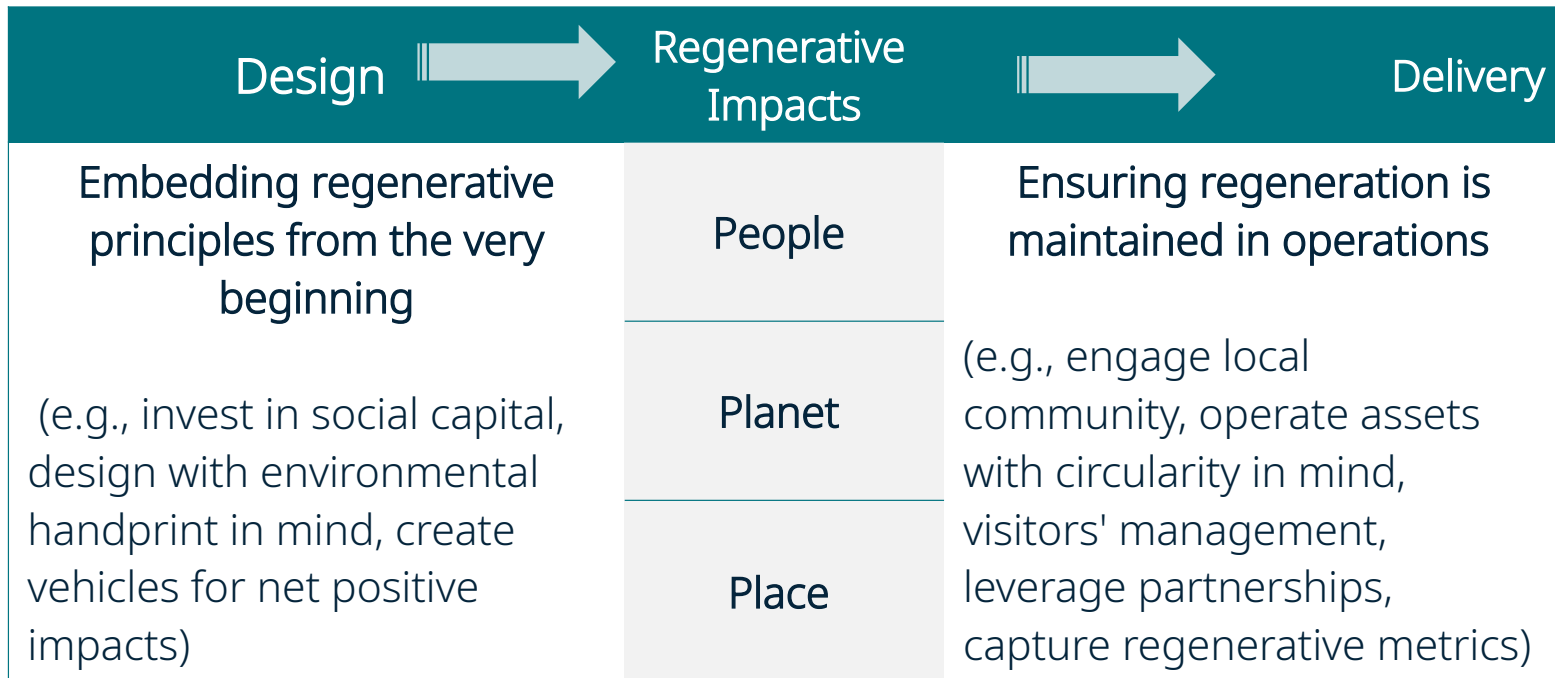
| AMAALA<br>Triple Bay Phase 1   |   |                                |   |
|--------------------------------|---|--------------------------------|---|
| Four Season Resort<br>228 keys |  | Clinique La Prairie<br>88 keys |  |
| Six Senses Resort<br>125 keys  |  | Jayasom<br>177 keys            |  |
| Rosewood Resort<br>136 keys    |  | Equinox<br>128 keys            |  |
| The Ritz-Carlton<br>390 keys   |  | Nammos<br>130 keys             |  |



## 02 Regenerative Tourism

# Regenerative Tourism

At Red Sea Global, Regeneration is not an outcome, it is a system embedded from design through delivery and operation.



**30%**  
Net Conservation  
Benefit by 2040

Enhancing biodiversity  
through habitat restoration,  
mangrove expansion, and  
coral reef protection.

REGENERATIVE TOURISM

# Leading a new model

RSG is pioneering regenerative tourism,  
actively restoring and enhancing the natural  
environment. Our commitment includes:

## Community & Economic Integration

Investing in local employment,  
training, and business opportunities,  
ensuring economic benefits extend  
beyond tourism.



**100%**  
Renewable  
Energy

Our destinations are  
powered by solar farms and  
one of the world's largest  
off-grid battery storage  
facilities (1,200MWh).



## Sustainable Mobility

Fully electric transport  
networks, including  
seaplanes, electric boats,  
and autonomous land  
vehicles.

# RSG destinations are powered from sunlight 100%



## Our commitment to clean mobility extends to land, sea, and air.

- Driverless shuttle
- EV fleet for guests
- EV charging network
- Biofuel for logistics fleet
- SAF for Sea Planes



# Landscape Nursery

1 million m2, 30 Million Plants by 2030.  
The largest in the Middle East



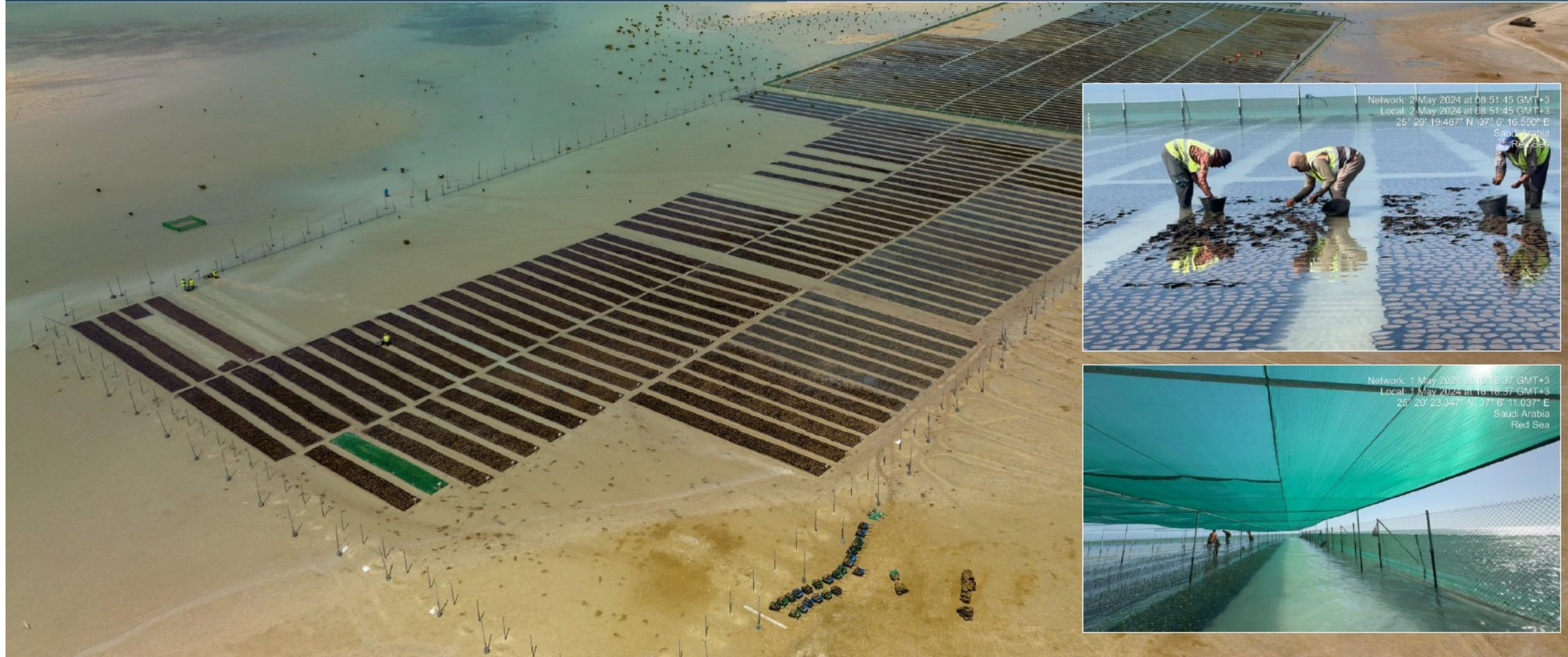
# Wetlands

The sewage treatment facility will be treating **16,000 m<sup>3</sup> of waste-water per day**, which will lead to 40 acres (170,000m<sup>2</sup>) of new **nature-based carbon sequestration** solutions being constructed.



# RSG Mangrove Nursery

Our Mangroves nursery launched in 2023 , target to produce 1.5 million seedlings per year  
To supports habitat restoration and enhancement project and our commitment to achieving a **30 % net conservation benefit** across our destination



# Corals Gardening & propagation projects



**10 thousands**  
Total no. of corals  
fragments in two location  
completed



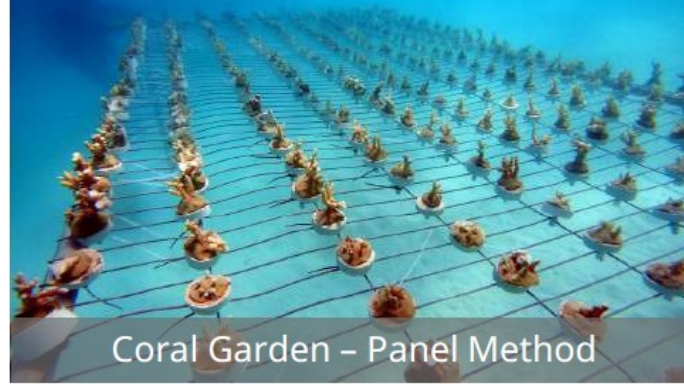
**14**  
High resilience  
species of Coral



**Ave. 96%**  
Coral Survival Rate



**60%**  
Overall Project  
Progress



Coral Garden – Panel Method



Coral Garden – Panel Method



Coral Garden – Rope Method



Coral Garden – Rope Method



Coral Health Survey



Coral Health Survey



Corallium, the Marine Life Institute, is a multifaceted destination dedicated to showcasing the wonders of the Red Sea's marine life, fostering appreciation for species and ecosystems, and inspiring ocean stewardship through a harmonious coexistence with nature. It combines captivating aquarium exhibits, cutting-edge marine research facilities, and immersive educational experiences

*Marina Village*  
**CORALLIUM**

# Building Rating Systems

# Commitment to Dark Sky



Total GFA Certified to date

754,000 Sqm

Total Certifications to date

27





## 02 Destination Development & Visitor Management

# Visitor Management – Destination Life Cycle Stages

Enabling Regenerative Development through Seamless Integration with the Development Process and all stages



First  
Phase

## Pre-concept Design Stage

Focusing on avoiding environmental impacts through optimizing masterplan configuration

Second  
Phase

## Concept & Design Development

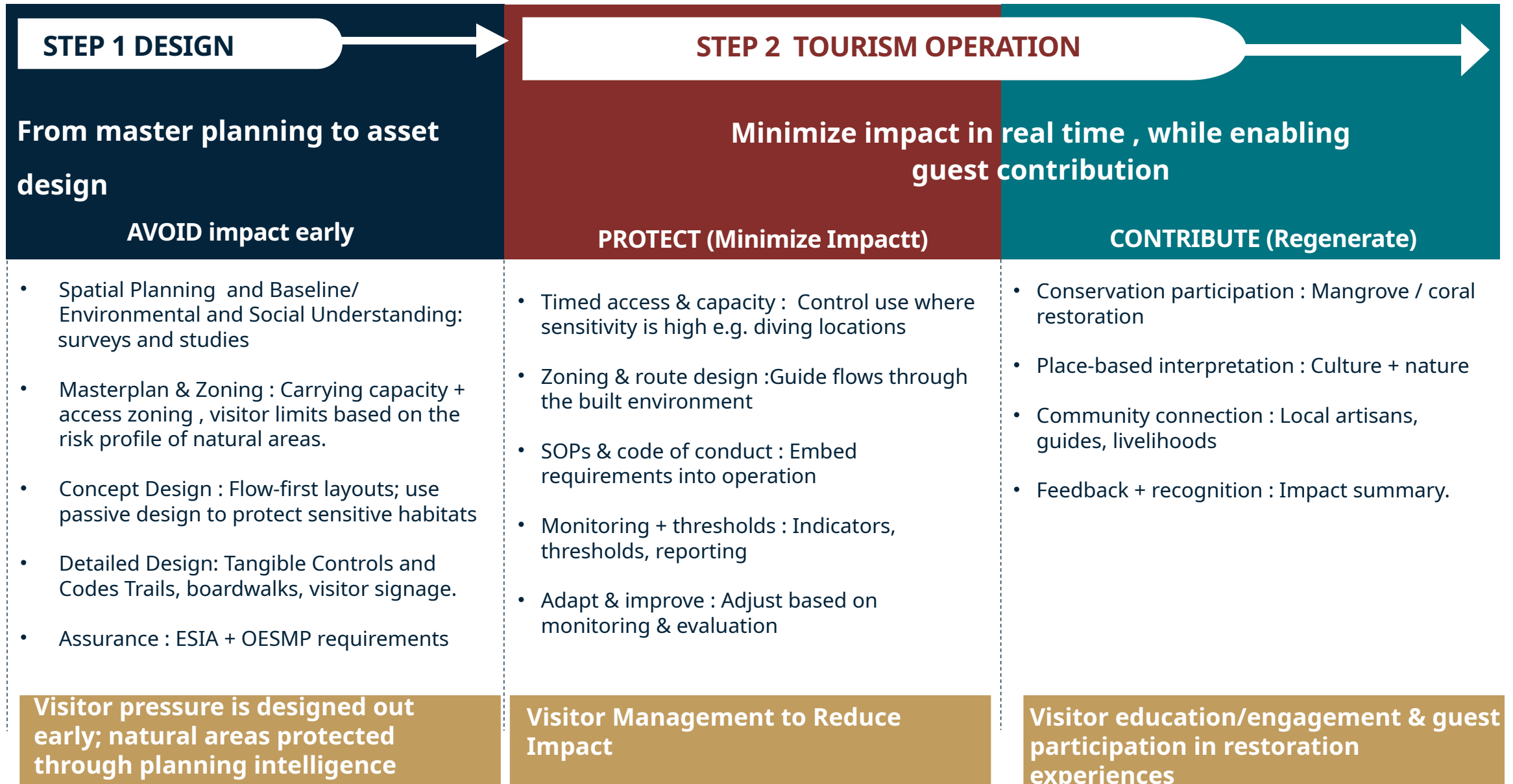
Focusing on optimizing the design with environmental handprint in mind

Third  
Phase

## Destination Operation

Visitor Management : visitor use is seamlessly guided, not heavily enforced , through zoning, SOPs, signage, staff stewardship, and real-time monitoring with thresholds.

# Visitor Management -Destination Level



# Visitor Management -Tourism Activities



**Key Activities**

- Zoning & Access Management
- Baseline Assessment
- Activities Impact Assessment

- Visitor Use Management plan
- Management Actions & Operational Controls
- Monitoring, Thresholds & Adaptive Management

- Implementation of Visitor Management control plan
- Operational Procedures & SOPs
- Evaluation, Learning

- Monitoring of Environmental Metrics & Capacity
- Threshold Tracking & Area Condition Assessment
- Evaluation, Learning & Adaptive Management



# Thank you

## Our Address

Tadawul Tower No. 1.17,  
KAFD, Al Aqiq District 7071,  
Riyadh 13519-2827,  
Saudi Arabia

## Social Media

Instagram: [@redseaglobal](#)  
X: [@redseaglobal](#)  
LinkedIn: [Red Sea Global](#)  
Facebook: [Red Sea Global](#)

## Websites

[www.redseaglobal.com](http://www.redseaglobal.com)



For People & Planet.

*Please consider the environment before  
printing this document.*