



■ Healthcentric Advisors ■ Qlarant
■ Kentucky Hospital Association
■ Q3 Health Innovation Partners
■ Superior Health Quality Alliance

HQIC

Hospital Quality Improvement Contractors
CENTERS FOR MEDICARE & MEDICAID SERVICES
QUALITY IMPROVEMENT & INNOVATION GROUP

Using an All-Cause Harm Prevention Model to Improve Care in HQIC Hospitals

GOAL: Provide a set of tools grounded in quality, patient safety, health equity, and patient and family engagement best practices to assist IPRO HQIC hospitals to reduce all-cause harm. This integrated approach helps decrease undue harm to patients, length of stay, mortality, and financial burden.

TOOLS: IPRO developed the Circle of Safety All-Cause Harm Prevention Model and created three resource tools based on the model. This model depicts the HQIC eight core patient safety areas with all-cause harm prevention at the center of patient safety and incorporates Patient and Family Engagement, Health Equity, Leadership Engagement, Emergency Preparedness and Response, and High Reliability as essential components of harm reduction.

CIRCLE OF SAFETY

IPRO HQIC's foundational Circle of Safety: All-Cause Harm Prevention Model and Resource Tool provides ample information, resources and tools to assist with harm identification, management, and prevention.



HEALTH EQUITY CONSIDERATIONS

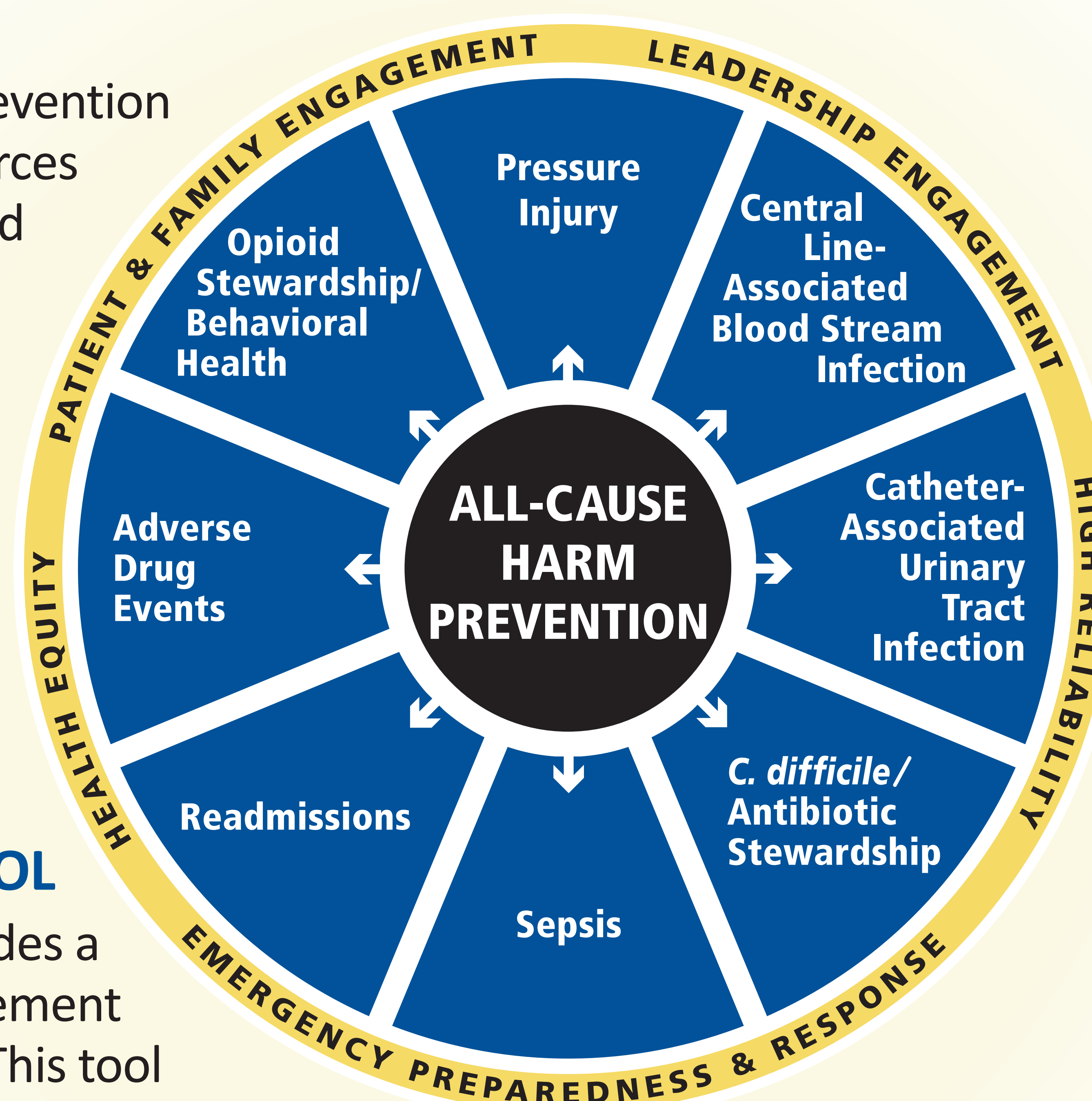
The Health Equity Considerations tool provides information and resources for advancing health equity in the eight patient safety priority focus area. Each harm area addresses evidence-based disparities, health equity considerations and best practices, and offers additional resources and tools.



PATIENT AND FAMILY ENGAGEMENT TOOL

The Patient and Family Engagement tool provides a crosswalk with the Patient and Family Engagement Best Practices with the eight all-cause harms. This tool provides a table of examples demonstrating how each

PFE Best Practice can be used to engage patients in actions that contribute to the reduction or prevention of each of the eight all-cause harm areas.



IMPACT

Measure RIR

All Cause Harm Composite Measure* 17.63%

ADE Composite Measure
(Anticoagulant, Severe Hypoglycemia) 35.63%

Opioid-Related Adverse Drug Event..... 20.04%

High-Dose Opioid Prescribing
Upon Discharge 18.67%

All Cause, Unplanned Hospital 30-day
Readmissions 5.26%

270 hospitals reporting

*Includes measures on: CAUTI, CLABSI, CDIFF, MRSA,
Pressure Injuries, Sepsis Mortality, Sepsis Shock

USING IPRO'S CIRCLE OF SAFETY APPROACH

IPRO implemented the Circle of Safety at the beginning of the HQIC contract. It supports all patient safety and technical assistance discussions. Hospitals have incorporated the approach into their quality improvement efforts. Since baseline, IPRO hospitals have realized a reduction in relative improvement rates for all eight areas of patient harms (remeasurement period Oct. 2022 – data available in Jan. 2024).

All tools are available on IPRO HQIC's Resource Library <https://hqic-library.ipro.org>.