



ADVANCE HYDRAU-TECH PVT. LTD.

Turning Waste into Resource... Worldwide

INDIA'S LARGEST MANUFACTURER & EXPORTER OF WASTE RECYCLING MACHINES

ISO 9001:2015 CERTIFIED





ADVANCE HYDRAU TECH PVT. LTD., New Delhi, India, is a forerunner in designing and manufacturing state-of-the-art and efficient waste management solutions for scraps ranging from scrap metals (ferrous and non-ferrous) to plastics to paper scrap. Our solutions include both manual and fully automatic PLC controlled machines and systems. Our range of machines includes balers for metal, paper and plastic scrap, metal shredders, shearing machines, box shear baler and briquetting machines. Our services include installation and training of new machines, repair and replacement of machine parts and buy back of our used machines. We have installed more than 7000 machines in over 70 countries. Apart from manufacturing and exporting highly advanced scrap processing systems, the company has also successfully implemented many turnkey projects in various countries relating to metal

Why Choose Us?

- 40 years of experience in providing efficient and highly productive recycling solutions
- Best infrastructure facility in the country, in-house production of all the components
- Widest variety of machines and custom made solutions
- Use of up to date technology and systems
- Prompt and responsive after sales service throughout the life cycle of the machine
- Certified and highly qualified sales and service engineers

SOME OF OUR ESTEEMED CLIENTS





OUR WORLDWIDE PRESENCE

 Machines Installed

NORTH AMERICA

Costa Rica
Trinidad and Tobago
USA (United States of America)

SOUTH AMERICA

French Guiana (France)
South Georgia and South Sandwich Islands (UK)

EUROPE

Cyprus
Italy
Ukraine
Norway

AUSTRALIA

Australia



ASIA

Bangladesh
Bhutan
India
Myanmar
Malaysia
Maldives
Nepal
Pakistan
Philippines
Russia
Singapore
Sri Lanka
Thailand

MIDDLE EAST

Bahrain
Iran
Iraq
Israel
Jordan
Kuwait
Lebanon
Oman
Qatar
Saudi Arabia
U. A. E.
Yemen

AFRICA

Angola
Benin
Botswana
Cabo Verde
Cameroon
Congo,
Republic of the
Cote d'Ivoire
Ethiopia
Ivory coast
Gambia
Ghana
Kenya
Uberia
Egypt
Guinea

Libya
Madagascar
Mali
Mauritius
Morocco
Mozambique
Mauritania
Namibia

Nigeria
Senegal
Seychelles
Sierra Leone
South Africa
South Sudan

Sudan
Tanzania
Togo
Tunisia
Uganda
Zimbabwe

● 7000 Machines Installed





SCRAP BALING PRESS - SINGLE / DOUBLE COMPRESSION MODEL

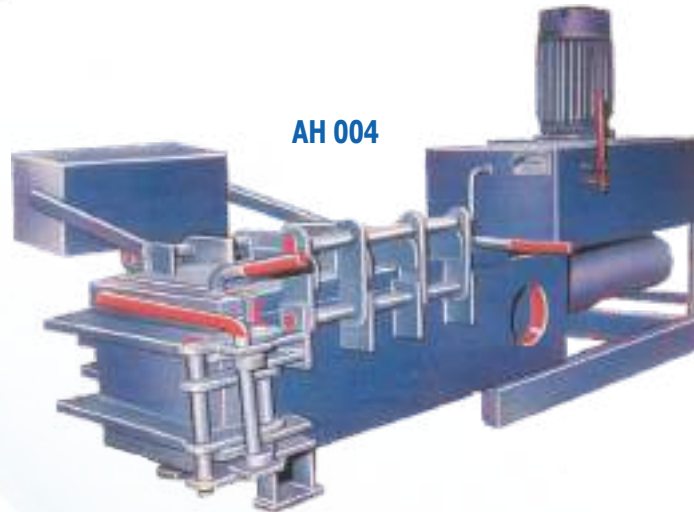
AH 006 (Export)



AH 005



AH 004



TECHNICAL SPECIFICATIONS

	AH 004	AH 005	AH 006 (Export)
Front Door	Manual	Auto	Manual
Baling Chamber	12" x 16" x 45" (H x W x L)	16" x 20" x 45" (W x H x L)	24" x 24" x 50" (H x W x L)
Bale Size	12" x 16" x 4-6 (H x W x L)	16" x 12" x V (W x H x L)	12" x 24" x v (H x W x L)
Weight of The Bale	20-35 Kgs (appx) (Ms)	30-50 Kgs (Ms) (appx)	40-60 Kgs (Ms)
Idle Cycle Time	80-85 Seconds (appx)	75 - 85 Seconds (appx)	60 Seconds (appx)
Weight of the machine	2.5 Tons (appx)	3500 Kg. (appx)	5.5 Tons (appx)

Optional

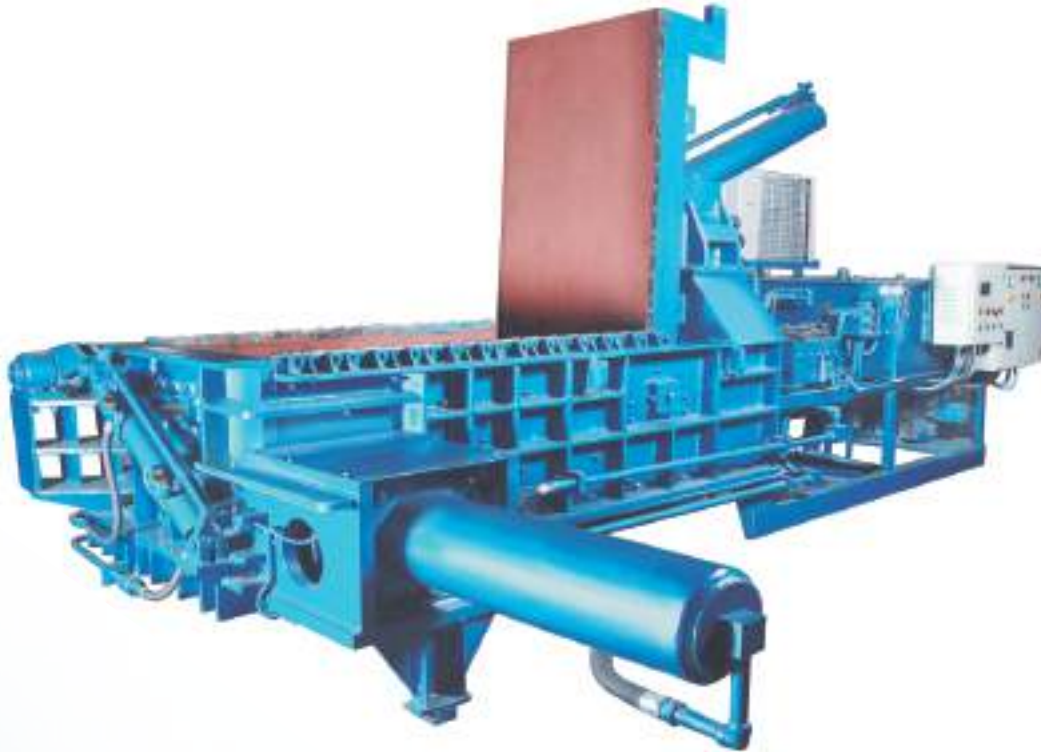
Online Oil Filtration System
Scrap Feeding Hopper

- Specifications are subject to change without prior notice.
- Accessories shown in the image are not necessary to form part of the actual machine.
- As the machines are custom made, weights (if mentioned) are indicative and may vary from machine to machine.





SCRAP BALING PRESS - TRIPLE COMPRESSION MODEL



TECHNICAL SPECIFICATIONS

Model	Bale Size	Bale Weight	Motor	Idle Cycle Time
Mini (6X6) TE/TO	6" x 6"	10-16 Kg (Ms)	30 hp	60-65 Sec
Mini (8X8) TE/TO	8" x 8"	15-27 Kg (Ms)	30 hp	45-50 Sec
Mini (9X9) TE/TO	9" x 9"	25-40 Kg (Ms)	30 hp	45-50 Sec
Mini (10x10) TE/TO	10" x 10"	30-45 Kg (Ms)	40 hp	40-45 Sec
Super (12X12) Turnout Auto	12" x 12"	50-80 Kg (Ms)	30 hp	70-75 Sec
Jumbo Ex (14X14) Turnout Auto	14" x 14"	70-100 Kg (Ms)	40 hp	60-65 Sec
Jumbo (15X15) Turnout Auto	15" x 15"	60-120 Kg (Ms)	50 hp	70-75 Sec
Jumbo (14 x 14) HD	14" x 14"	35-60 Kg (Al)	50 hp	80-85 Sec
Jumbo (18X18) Turnout Auto	18" x 18"	150-250 Kg (Ms)	60 hp	75-80 Sec
Jumbo (20X20) Turnout Auto	20" x 20"	upto 350 Kg (Ms)	40+40 hp	90-100 Sec
Jumbo (24X24) Turnout Auto	24" x 24"	upto 500 Kg (Ms)	50+50 hp	90-100 Sec

* TE - Top Ejection

* TO - Turn Out



- Specifications are subject to change without prior notice.
- Accessories shown in the image are not necessary to form part of the actual machine.
- As the machines are custom made, weights (if mentioned) are indicative and may vary from machine to machine.



CONTINUOUS SCRAP BALING MACHINE



TECHNICAL SPECIFICATIONS

Feeding Chamber Size	Bale Size	Power Required	Idle Cycle Time	Weight of Bale (MS)	Weight of Bale (Aluminum)	Bales / hr
24" x 65" x 26.5" (H x L x W)	8" x 8" x V* (H x L x W) 300 X 300 X V* mm (H x L x W)	50 hp	40-45 sec	20-30 Kgs	10-15 Kgs	70 - 80
27" x 68" x 29" (H x L x W)	10" x 10" x V* (H x L x W) 300 X 300 X V* mm (H x L x W)	50 hp	40-45 sec	30-40 Kgs	10-18 Kgs	70 - 80
29" x 71" x 31.5" (H x L x W)	12" x 12" x V* (H x L x W) 300 X 300 X V* mm (H x L x W)	60 hp	45-50 sec	50-80 Kgs	15-30 Kgs	60 - 70



- Specifications are subject to change without prior notice.
- Accessories shown in the image are not necessary to form part of the actual machine.
- As the machines are custom made, weights (if mentioned) are indicative and may vary from machine to machine.



VERTICAL BRIQUETTING PRESS



Online Chiller



Infeed Hopper



Briquettes



PLC Control



HORIZONTAL BRIQUETTING PRESS



TECHNICAL SPECIFICATIONS (Vertical)						
Briquette Size	Length of the Briquette	Number of Briquettes	Weight of Briquette (in Aluminium)	Weight of Briquette (in Iron)	Motor Required	Machine Operation
3" Dia	1.5" - 3" (V)	220 - 240 / Hr	300 - 600 gm	.5 - 1.2 Kg	50 hp	PLC Controlled
4" Dia	2" - 4" (V)	220 - 240 / Hr	1.0 - 1.5 Kg	3 - 4.5 Kg	60 hp	PLC Controlled
5" Dia	3" - 5" (V)	220 - 240 / Hr	2 - 4 Kg	5 - 8 Kg	75 hp	PLC Controlled

TECHNICAL SPECIFICATIONS (Horizontal)						
Briquette Size	Length of the Briquette	Number of Briquettes	Weight of Briquette (in Aluminium)	Weight of Briquette (in Iron)	Motor Required	Machine Operation
3" Dia	1.5" - 3" (V)	220 - 240 / Hr	300-600 gm	0.5 - 1.2 Kg	50 hp	PLC Controlled
4" Dia	2" - 4" (V)	220 - 240 / Hr	1 - 1.5 Kg	3 - 4.5 Kg	60 hp	PLC Controlled

- Specifications are subject to change without prior notice.
- Accessories shown in the image are not necessary to form part of the actual machine.
- As the machines are custom made, weights (if mentioned) are indicative and may vary from machine to machine.





HYDRAULIC SHEARING MACHINE



TECHNICAL SPECIFICATIONS			
	AHS - 50	AHS - 65	AHS - 85
Blade Size	600mm	600mm	900mm
Cutting Capacity	50mm Round(MS)	2-1/2" (65mm) Round	85mm Round, 75mm Square(MS)
No. of Strokes	13 - 14 / Minutes	13 - 14 / Minutes	10 - 12 / Minutes
Motor	15 hp	30 hp	40 hp
Pump	Plunger Cum Gear Pump	Axial Piston Cum Gear Pump	Axial Piston Cum Gear Pump
Blade Opening	9"	9"	16"
Operation of The Machine	Manual By Push Button By Pedal Single Cycle Full Auto	Manual By Push Button By Pedal Single Cycle Full Auto	Full Auto, By Foot Pedal Single Cycle manual by Push Button
Working pressure	2400 PSI	2400 PSI	2400 PSI
Oil Tank Capacity	600 Ltr. (appx)	600 Ltr. (appx)	800 Ltr. (appx)
Weight of Machine	2800 Kg (appx)	6500 Kg (appx)	8000 Kg (appx)
Operation Type	Clamping Then Shearing	Clamping Then Shearing	Clamping Then Shearing
Starter	Provided	Provided	Provided

HYDRAULIC NIBBLER MACHINE



TECHNICAL SPECIFICATIONS		
	HYDRAULIC NIBBLER MACHINE	MECHANICAL NIBBLER MACHINE
Blade	"V" Shaped	"V" Shaped
No. of Stroke	14 - 16 Strokes / Minutes	30 - 36 Strokes / Minutes
Motor	15 hp 1440 Rpm	5 hp
Pump	Plunger Cum Gear Pump	Plunger Cum Gear Pump
Blade Opening	4"	4"
Operation of The Machine	Manual By Push Button By Pedal Single Cycle Full Auto	Continuous Cycle
Working pressure	2400 PSI	NA
Oil Tank Capacity	200 Ltr. (appx)	NA
Wt. of Machine	2500 Kg (appx)	1100 Kg (appx)
Starter	Provided	Provided
Overall Dimension	4" x 3" x 7" (L x W x H)	60" x 25" x 40" (L x W x H)



- Specifications are subject to change without prior notice.
- Accessories shown in the image are not necessary to form part of the actual machine.
- As the machines are custom made, weights (if mentioned) are indicative and may vary from machine to machine.



BOX SHEAR / SHEAR BALER



It Can Shear Upto

	AH 400	AH 600
□ Solid Square	110 mm	140 mm
○ Solid Round	120 mm	160 mm
▭ Solid Flat	50 x 850	80 x 850

Cutting Capacity (ms)

TECHNICAL SPECIFICATIONS		
	AH 400	AH 600
Shearing Force	400 Tons	600 Tons
Shearing Thorat	60mmX900mm	600mmx900mm (HxW)
Folding Box Width	2600 (appx)	2600 (appx)
Length of Box	5000mm (appx)	6000mm (appx)
Total Width	3600mm (appx)	3900mm (appx)
Total Height	4500mm (appx)	4500mm (appx)
Total Weight	13200mm (appx)	15200mm (appx)

- Specifications are subject to change without prior notice.
- Accessories shown in the image are not necessary to form part of the actual machine.
- As the machines are custom made, weights (if mentioned) are indicative and may vary from machine to machine.





COMPLETE SHREDDING SYSTEM

Shredder / Hammer Mill From 50 HP to 750 HP



Description	Cap. 1-2 tons/hour	Cap. 2-4 tons/hour	Cap. 4-7 tons/hour
-------------	--------------------	--------------------	--------------------

A. Primary - In Feed - Conveyor

Width of belt	900 mm.	1200 mm.	1800 mm.
Side Skirting	Provided	Provided	Provided
Length	9 Mtrs	9.2 Mtrs	10.0 Mtrs (appx)
Motor	2 hp 1440 RPM	2 hp 1440 RPM	7.5 hp 1440 RPM
Design	Trough Type	Trough Type	slat chain type
Drive	A/C drive	A/C drive	A/C drive

B. Rotary Shear (Pre - Shredder)

Feeding chamber width	850mm X 1000mm	1250mm X 1500mm	2500mm X 1850mm
Controls	PLC Control / Push Buttons	PLC Control / Push Buttons	PLC Control / Push Buttons
Overall Dimension	13" x 5" (appx)	15" X 7" (appx)	30" X 7.5" (appx)
Electrical Motor	40 hp	50 hp	150 hp
	30 hp	75 hp	125 hp
Drive	2 Nos. Gearboxes	2 Nos. Gearboxes	2. Nos. Gearboxes
Wt. of the machine	12.5 Tons (appx)	25 Tons (appx)	40 Tons (appx)

C. Pre - Shredder Out Feed Conveyor and Shredder in feed Conveyor

This conveyor will transfer Pre Sheared Scrap from Rotary Shear to main shredder. Also small size scrap, which does not require pre - crushing can be directly fed through this conveyor

Width of the belt	900 mm	1200 mm	1600 mm
Length	12 Mtrs	17 Mtrs	17 Mtrs
Motor	2 hp	10 hp	10 hp
Design	Trough Type	Trough Type	Slat Type

D. Shredder

This Shredder is meant to Shred the small size scrap either fed directly or via pre-shredder into small dense scrap. This is Hammer type Shredder with robust design, having heavy-duty bearing and bearing blocks, the rotor, hammers & the sieve are all designed from various alloys. The main rotor assembly shall be well balanced.



Feeding Mouth	1300 mm x 1600 mm	1400 mm x 1250mm	1600 mm x 1800 mm
Electrical Motor	125 hp	220 hp	500hpX960 RPM or 420hpX720 RPM
Shredding Capacity	1-2 tons/hr of small sized scrap	2-4 tons/hr of small sized scrap	4-7 tons/ hr of small sized scrap
Hydraulic Power Pack Motor	7.5 hp	7.5 hp	7.5 hp
Weight of the Machine	15 Ton (appx)	30 Ton (appx)	65 - 70 Ton (appx)

E. Final - Out Feed - Conveyor

This Conveyor will transfer shredded Scrap from the shredder to the magnetic Separator belt.

Width	600 mm	900 mm	1200 mm
Length	5 mtrs	5 mtrs	5 mtrs
Motor	2 hp	2 hp	2 hp

F. Magnetic Separator Belt

This conveyor will pick up only ferrous shredded sc scrap from the above Out Feed Conveyor and transfer it to stocking area. The balance material shall be transferred to vibratory screen.

Width	600 mm	900 mm	1200 mm
Length	3 mtrs	3 mtrs	3 mtrs
Motor	2 hp	2 hp	2 hp
Design	Flat Belt	Flat Belt	Flat Belt

G. Vibrating Screen

The items which are not picking up by the magnet shall be dropped no the vibrating conveyor, which will remove dust and transfer non - magnet items i.e. Plastic, Paper, Wood, Glass, Foam and non ferrous scrap to a collection container.

Size	3 mtrs x 810 mtrs x V	3 mtrs x 840 mtrs x v	3 mtrs x 810 mtrs x V
Motor	3 hp 975 RPM	3 hp 975 RPM	3 hp 975 RPM
Overall Dimension	4550 x 1180 x 1700 (LxWxH)	4550 x 1180 x 1700 (LxWxH)	4550 x 1180 x 1700 (L x W x H)

H. PLC and Electrical Control Panel :

The system shall have well designed electrical/ electronic control panel with standard accessories having Seimens/Schineders components

Features:

1. Oil Lubrication System installed for lubricating moving parts.
2. Reversing features on overload.
3. Emergency stop.





SEMI AUTO TIE HORIZONTAL BALER

2-4 Tons/Hr

Suitable For :

Paper

Plastic

PET Bottle

Fabric Waste

**Best For :
High Densified Bundle**



FEATURES

- Capable to handle big quantity upto 16-24 tons/Shift* (Depend upon Material)
- Automatic Operations
- Reduce Manpower
- User Friendly Automatic Module
- High Density Bundle
- Reduce logistics cost
- Power efficient
- Heavy & Robust Structure
- Minimum civil work required

TECHNICAL SPECIFICATIONS

Model No	Bale Size	Bale Weight	Production/Hr	Strapping/Tying
Semi Auto Tie Horizontal Baler	35" X 29" X V*	600-750 Kgs (In OCC) 400 - 600 Kgs (In PET)	2-3 Tons/Hr	Semi Auto



- Specifications are subject to change without prior notice.
- Accessories shown in the image are not necessary to form part of the actual machine.
- As the machines are custom made, weights (if mentioned) are indicative and may vary from machine to machine.



FULLY AUTO TIE HORIZONTAL BALER

4 Tons /Hr to 30 Tons/Hr

FEATURES

- Automatic Operations
- User Friendly Modules
- Power Efficient
- Heavy & Robust Structure



High Productivity With
Lowest Running Cost

TECHNICAL SPECIFICATIONS

Model No	Bale Size	Bale Wt.	Production/Hr	Strapping/Tying
HPB 13	(W) 29" X (H) 29 X (L) V	300-400 Kgs (In OCC)	1-3 Tons/Hr	Fully Automatic
HPB 46	(W) 35" X (H) 29 X (L) V	400-600 Kgs (In OCC)	4-6 Tons/Hr	Fully Automatic
HPB 812	(W) 44" X (H) 42 X (L) V	800 - 1200 Kgs appx (IN OCC)	8-12 Tons/Hr	Fully Automatic
HPB 1216	(W) 44" X (H) 42 X (L) V	800 - 1200 Kgs appx (IN OCC)	12-16 Tons/Hr	Fully Automatic
HPB 1722	(W) 44" X (H) 51 X (L) V	1000 - 1400 Kgs appx (IN OCC)	17-22 Tons/Hr	Fully Automatic
HPB 2429	(W) 44" X (H) 57 X (L) V	1000 - 1400 Kgs appx (IN OCC)	24-29 Tons/Hr	Fully Automatic

- Specifications are subject to change without prior notice.
- Accessories shown in the image are not necessary to form part of the actual machine.
- As the machines are custom made, weights (if mentioned) are indicative and may vary from machine to machine.





VERTICAL BALER

**For : Plastic, PET Bottles, Paper,
Cardboard & Fabric Waste**



DOUBLE CYLINDER



SINGLE CYLINDER

TECHNICAL SPECIFICATIONS

	Vertical Double Cylinder Baler	Single Cylinder Vertical Baler	Vertical PET Bottle Baler	Vertical Paper Baler Single Cylinder
Bale Size	30" x 48" x V	24" x 36" x V	20" x 28" x V	22" x 34" x V
Bale Weight	250-500 Kgs (OCC)	50-90 Kgs (OCC)	40-115 Kgs (PET)	30-70 Kgs (OCC)
Production/Shift	6-8 Tons	2-4 Tons	2-3 Tons	2-3 Tons
Strapping/Tying	Manual	Manual	Manual	Manual



- Specifications are subject to change without prior notice.
- Accessories shown in the image are not necessary to form part of the actual machine.
- As the machines are custom made, weights (if mentioned) are indicative and may vary from machine to machine.



CAN SORTING SYSTEM



TECHNICAL SPECIFICATIONS

Roller Belt Conveyor 1.5 meters long, 900 mm wide to suit

1. The height of the delivery picks ups
2. Vibrating screen 900 mm x 1.5 M with 1.5" holes and a roller dust bin for easy cleaning.
3. Magnetic belt conveyor 900 mm wide cleats 2.5" cum sorter with extra powerful rare earth magnetic drum and ferrous material collecting chute.
4. Vibrating screen 900 mm x 1.5 M with 1.5" holes and a roller dust bin for easy cleaning.
5. Belt conveyor to charge the clean cans to the Baler hopper.
6. A chute type hopper for holding the clean aluminium can for fast loading in the baling press.
7. A suitable control panel with emergency and remote operation desk will be provided.
8. Drives of vertical conveyors shall be variable speed to take out the maximum out put of the system.

- Specifications are subject to change without prior notice.
- Accessories shown in the image are not necessary to form part of the actual machine.
- As the machines are custom made, weights (if mentioned) are indicative and may vary from machine to machine.





HYDRAULIC GRAB



TECHNICAL SPECIFICATIONS	
No. of Arms	Lifting Capacity
4	150-250 Kg
	300 Kg
	500 Kg
	1000 Kg
	2500 Kg

HYDRAULICALLY OPERATED REVOLVING TOWER CRANE



TECHNICAL SPECIFICATIONS	
Lifting Capacity	200 - 3500 Kg
Boom Length	7.5 Mtr (Max)
Revolving Angle	180°

MOBILE BALER



- Efficiency to cope up with all Ferrous and non-ferrous metal scrap at the remote suppliers
- Runs on Own Power



- Specifications are subject to change without prior notice.
- Accessories shown in the image are not necessary to form part of the actual machine.
- As the machines are custom made, weights (if mentioned) are indicative and may vary from machine to machine.

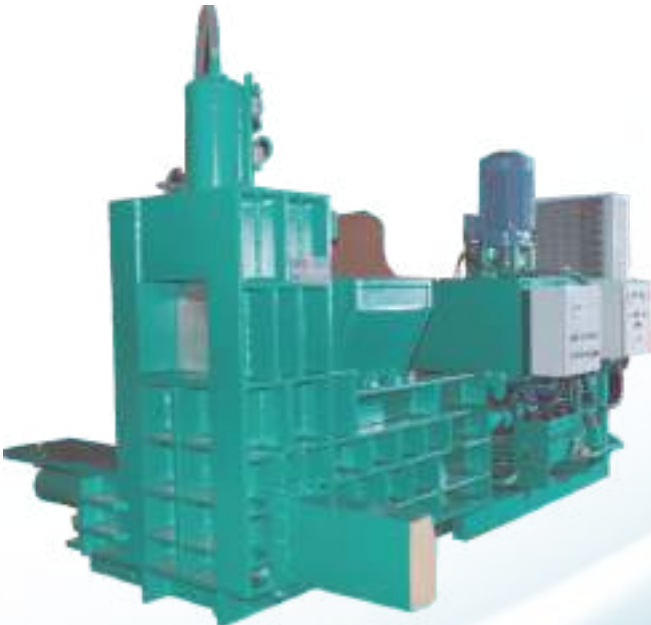


TMR MIXER



TECHNICAL SPECIFICATIONS	
Batch Size	800 Kgs appx
Mixing Time	12 to 15 minutes
Electric Motor	20 hp
Over All Dimensions	225" (L) x 90" (W) x 96" (H)

FODDER BLOCK MAKING MACHINE



TECHNICAL SPECIFICATIONS		
	Fodder Block Making Machine	Fodder Block Making Machine (High Density)
Feeding Chamber	24"x18"x43" (HxWxL)	23"x24"x50" (HxWxL)
Block Size	12"x18"x5" (HxWxL)	12"x24"x6" (HxWxL)
Motor H.P Required	25 hp	30 hp
Production of Blocks	70 - 90 appx / Hr	90 - 100 appx / Hr
Wt. of Block (Dry Fodder)	10 - 12 Kgs	17 - 20 Kgs
Wt. of Block (TMR) 50-50 Ratio	16 - 18 Kgs	27 - 30 Kgs
Packaging in Poly bag	Semi Auto (Through Chute)	
Operation of Machine	PLC Controlled	PLC Controlled
Weight of the Machine	6.5 Tons (appx)	8 Tons (appx)

- Specifications are subject to change without prior notice.
- Accessories shown in the image are not necessary to form part of the actual machine.
- As the machines are custom made, weights (if mentioned) are indicative and may vary from machine to machine.





AWARDS & ACHIEVEMENTS

Asia's Greatest Brands & Leaders 2016 Award by URS International / Aisa One Magazine



India's Small Giants Award By India SME Forum



India's Top 100 SME Award By India SME Forum & Axis Bank



Udyog Ratan Award by Institute of Economic Studies (IES)





EVENTS & EXHIBITIONS

MRAI's 4th International Indian Metal Recycling Conference, 2017



Steelmint Scrap Recycling Conference, 2016



METALEX Vietnam , 2016



MRAI's 2nd International Indian Metal Recycling Conference, 2015



**India's Largest
Manufacturer & Exporter**

**Present in
70+ Countries**

**Installed More Than
7000 Machines Worldwide**

**Certified
Sales & Service Engineers**



ADVANCE HYDRA-TECH PVT. LTD.

Regd. Office-cum-Works: 86/23, Village Ghevra
(Near Hiran Kudna Mor), New Rohtak Road, Delhi-110081 (INDIA)
Tel.: +91-11-28353700 -10, Mob. : 91-9810028984 / 91-9810728984
E-mail: info@ahtpl.in

Website: www.advancehydrautech.com, www.advancehydrautech.in, www.automaticbalers.com