

## The modular offer for your individual requirements.



**The Infront Professional Terminal gives you access to real-time global markets, news, analytics and electronic trading in virtually all asset classes. You can easily tailor it to suit your preferences, and add modules to create the perfect terminal for your needs.**

### Trading Module

Set up your execution solutions just the way you want them, with powerful trading functionality at your fingertips. The Infront Professional Terminal Trading Module is an independent electronic trading platform with access to global counterparties and multi-asset class execution of both listed and OTC products.

#### Highlights

- Mono or multi-broker solution
- Real-time blotters
- DMA, Care and Algo-Strategy Suites available from selected brokers
- Basket Trading, Order Import and Click Trading

### Equity Analytics Module

The Infront Professional Terminal Equity Analytics Module gives you in-depth financial data and analytics on over 70,000 listed companies worldwide. Screen the market for investment opportunities, get an instant overview of any company profile, compare to peer group or industry, and build advanced analysis templates with our powerful Excel add-in.

#### Highlights

- Annual and interim financial statements with 5-year history
- Consensus estimates with 4-year forecast, actuals and historical data
- Valuation multiples, financial ratios, beta values

- Powerful multi-criteria screening tools
- Predefined company peer groups
- One-page company factsheet including GPRV proprietary analysis
- Excel add-in with smart export to Excel, refreshable template models and user-defined functions module
- Infront Estimates consensus





## Equity Analytics Premium add-on

Annual and interim financial statements with 5-year history:

- More in-depth analytics and up to 30 years of fundamental data
- Up to 30-year history of detailed financial statements
- Company reports and filings
- 3-page company profile factsheet

## EOD Module

The Infront Professional Terminal End-of-Day API data solution provides closing prices and allows you to upload end-of-day prices automatically for calculations and valuations in your portfolio management system.

### Highlights

- EOD API for portfolio management
- Web service



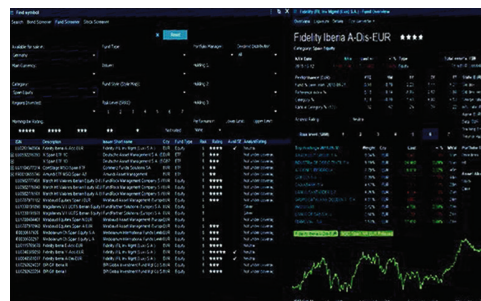
## Funds Module

The Infront Professional Terminal Funds Module gives you access to an extensive database of global mutual funds where screening tools help you identify investment opportunities quickly

and easily. Unique fund overview pages give you a rich summary of all data related to a fund for analysis and comparison.

### Highlights

- Global funds data
- Funds overview including holdings
- Ratings and KID documents
- Funds screener

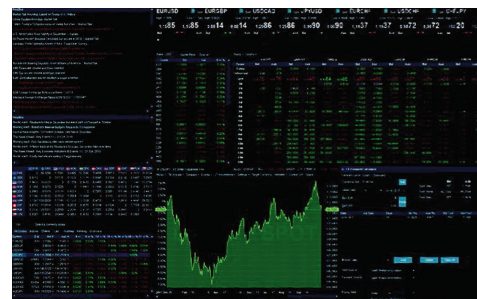


## Treasury Module

With the Infront Professional Terminal Treasury Module, you can optimize long-term funding and hedging, secure short-term liquidity and mitigate credit and counterparty risk. The Treasury Module is comprehensive and easy to use, with pricing, peer and OTC contributed data, and money market views to help you follow fast-moving markets.

### Highlights

- OTC data from selected banks
- IDB data from Tullett Prebon including rates, FX, FI, MM
- Rate fixings including Euribor, Libor ++ and iTraxx indices
- Premium FX data and FX fwd calculator



## Treasury Premium Add-On

- In-depth rates and FX derivatives
- Complete caps & floors surface for over 20 rates
- FX options for over 100 currency pairs

## Corporate Bonds Module

The Infront Professional Terminal Corporate Bonds module consolidates fundamental data, OTC and exchange pricing for corporate debt instruments in one complete solution. The module provides a venue/contributor overview, the possibility to calculate yield or price a bond on a given yield, as well as calculate several important risk indicators. Smart search and screening tools help you identify and compare investment opportunities with ease.



## Highlights

- Overview of reference data and indicative prices from multiple contributors
- Easy-to-use, powerful multi-criteria screening tools
- Yield/price Calculator

Additional market data and other 3rd party services can be ordered in the terminal.

## About us

Financial professionals across Europe and South Africa rely on Infront for flexible financial market solutions. We provide a powerful solution offering for portfolio management and investment banking, cash management, risk, compliance and valuation, as well as media and distribution. Our solutions serve 3,600 customers with over 90,000 professional users. With our support for their complete workflow, financial professionals can manage investment decisions, reduce costs, adapt to fast-changing market requirements and work more efficiently with ever increasing amounts of information – quickly, easily and flexibly.

More than 500 employees in 13 countries across Europe and South Africa apply their expertise to meet the challenges of our clients, ensuring they continuously receive the best solutions and services. Infront is listed on the Oslo Stock Exchange.

07/2020