

Get Protected

Are you looking for automation products equipped to withstand harsh cleaning regimens? With our extensive catalogue of products and technologies, iAutomation has you covered.



KOLLMORGEN
A REGAL REXNORD BRAND

DOOSAN **Weidmüller** **SE**



RITTAL

APEX DYNAMICS, USA

FESTO

BANNER

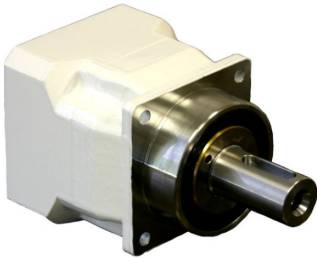
Tolomatic
EXCELLENCE IN MOTION

ABB

B&R

Motors

Aluminum, stainless steel, and epoxy coated designs ready for food contact and splash zones, reducing cleaning time and extending service life.



Gearboxes

Corrosion resistant materials and food safe lubrication eliminate the need for protective hardware such as enclosures, shielding, or mechanical transmission.



Actuators

Electric and pneumatic products designed with smooth contact surfaces that eliminate contaminant "catch points."



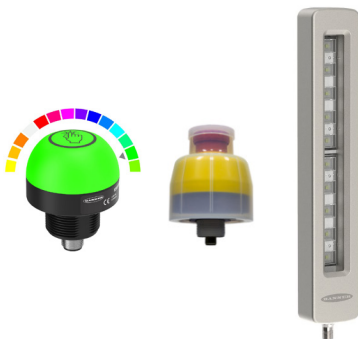
Pneumatics

Valve terminals and pinch valves made with FDA-compliant materials, ready to mount closer to where you need them.



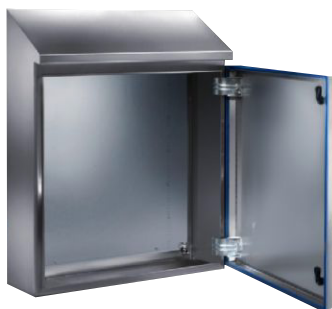
Sensors

We offer a wide-selection of Proximity & Presence, Safety Sensors, Ultrasonic, RFID, and more; with ratings from IP66 to IP69k.



Lights & Buttons

Pushbuttons and lighting with rugged construction for operation in wet environments.



Enclosures

Sloped tops and silicone gaskets are just two key features of this fully stainless lineup of hygienic enclosures and climate control products.

Fieldbus I/O

Machine mounted I/O modules with IP69k construction, Ecolab Certified to withstand harsh cleaning regimens.



Conveyors

Tool-less belt release makes cleaning under the belt quick and easy, with no tension or tracking adjustments required.



Operator Panels

Stainless steel HMI housing and membrane push buttons provide a sleek solution that's ready for stringent cleaning requirements.



Robots

Pick and place delta robots and even collaborative robots that are NSF certified and ready for food handling applications.

Looking For More?

Learn about our washdown products and technologies online.



Which IP rating do you need?

This helpful chart breaks down the protection you get, by the numbers.

1st digit - **solid**

degree of protection against solid objects



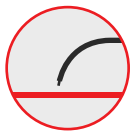
Protected against a solid object greater than 50mm, such as a hand.



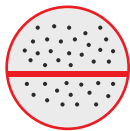
Protected against a solid object greater than 12.5mm, such as a finger or similar objects.



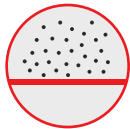
Protected against a solid object greater than 2.5mm, such as tools, thick wires, etc.



Protected against a solid object greater than 1mm, such as most wires, screws, etc.

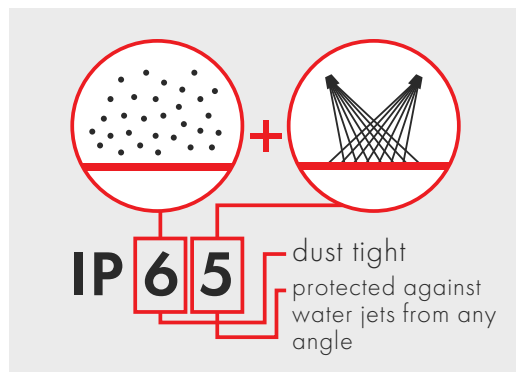


Dust protected. Prevents ingress of dust sufficient to cause harm.



Dust tight. No ingress of dust; complete protection against contact.

example



2nd digit - **liquid**

degree of protection against water



Protected against dripping water (vertical falling drops).



Protected against vertically dripping water when tilted at an angle up to 15° from its normal position.



Protected against water falling as a spray at any angle up to 60° from the vertical.



Protected against water splashing from any angle.



Protected against water jets (6.3 mm nozzle) from any angle.



Protected against powerful water jets (12.5 mm nozzle) from any angle.



Protected against the effects of temporary submersion in water. (30 minutes at 3 feet)



Protected against the effects of permanent submersion in water. (up to 13 feet)



Protected against close-range high pressure, high temperature spray downs.

customerrelations@i-automation.com

QUOTES: pricing@i-automation.com

ORDERS: orders@i-automation.com

REPAIRS: rma@i-automation.com

BUY ONLINE: shop.i-automation.com

IAUTOMATION
a division of CAS

(800) 662-6748

i-automation.com