



- [INCONVENIENT TOURISM] CAMPAIGN

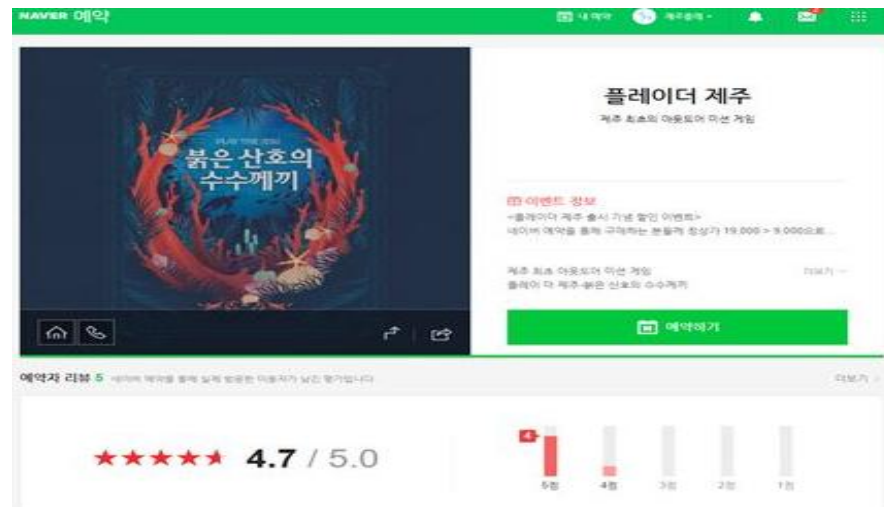
- ↳ CHALLENGE OF THE INCONVENIENT TOURISM METHOD

- ↳ SNS UPLOAD , THE CONTENT OF ECHO FRIENDLY TRAVEL REVIEW

KTO's responsible tourism Projects

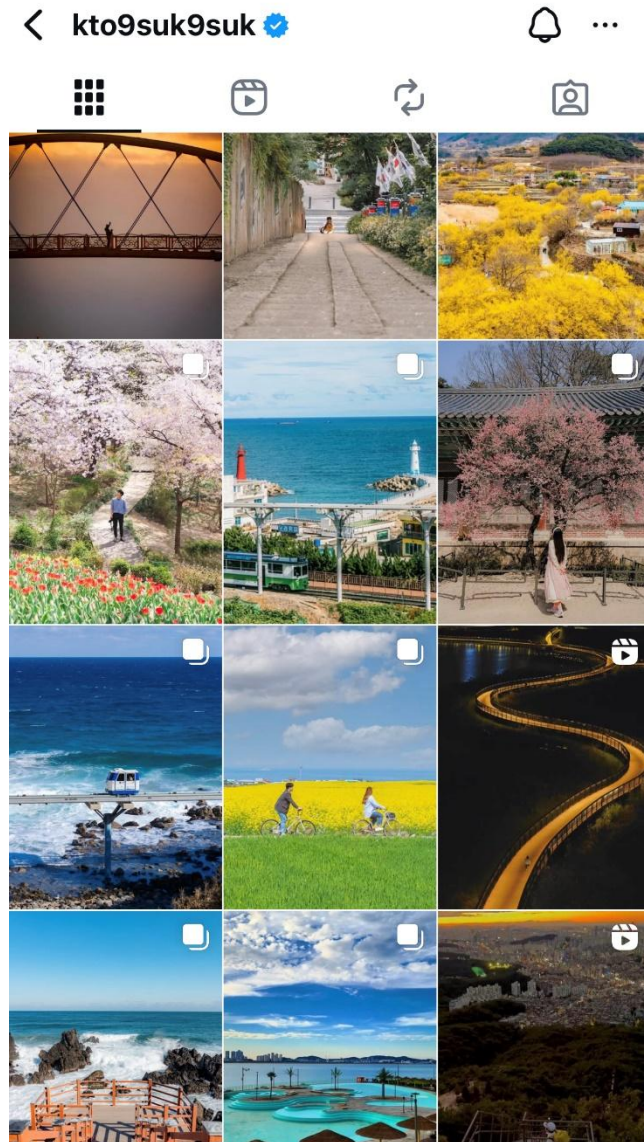


03 KTO's responsible tourism Projects





KTO's responsible tourism Projects



나의 여행 탄소배출량 알아보기

교통수단
숙박&식사
탄소배출량계산

함께 여행할 인원을 정해주세요

움직여보세요 2명

출발할 때, 여행 중에, 돌아올 때
교통수단을 선택해주세요!

출발할 때 80km → 여행 중에 10km → 돌아올 때 80km

돌아올 때 무엇을 타시나요?

비행기 자동차 철도 버스 도보

이동할 거리를 움직여보세요!

0km 300km 600km 900km 1200km 1500km

80km

다음 >

KTO's responsible tourism Projects

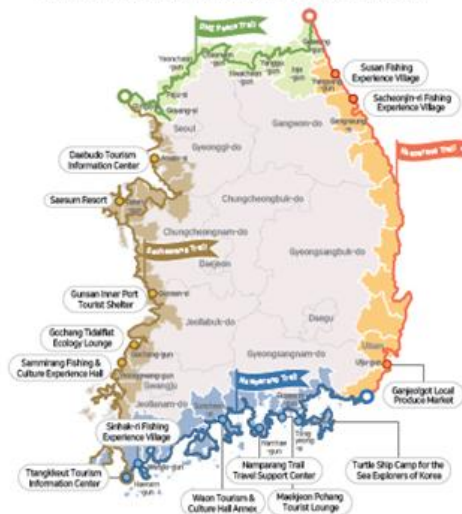


KTO's responsible tourism Projects

Korea Dulle Trail Visitor Center

Start your journey on Korea Dulle Trail at the shelter. The Korea Dulle Trail Visitor Center is a strategic point on Korea Dulle Trail conveniently located for those who wish to take a short break from walking on the trail, those who wish to challenge themselves to a hike up Haeparang, Namparang and Seohaerang trails, and those who need a recommendation on a section that is great for a walk.

- **Main Services** Information / Rest Area / Cloakroom / Trail Programs / Events / Complaints
- **Other Services** Commentary / Cafes / Cooking Facility / Restroom / Accommodation / Shower Facility / Souvenirs / Convenience Store



Durunubi

Durunubi is a platform that offers services customized for walking travelers including information on Korea Dulle Trail courses, tourist attractions nearby, walk-along paths, and stamp tours.



<https://www.durunubi.kr/eng/main.do>

KOREA DULLE TRAIL

One Step at a Time on the Road to Discover Korea

Korea Dulle Trail is a walking trail that stretches out over approximately 4,500 kilometers by connecting existing roads on the eastern, western, and southern coasts of Korea as well as the DMZ border area. The trail consists of the Haeparang Trail in the east, Namparang Trail in the south, Seohaerang Trail in the west and the DMZ Peace Trail in the border area.

HAEPARANG TRAIL

A beautiful coastal walk featuring major beaches and sunrise destinations on the east coast as well as the eight famous spots in eastern Korea

SEOHAERANG TRAIL

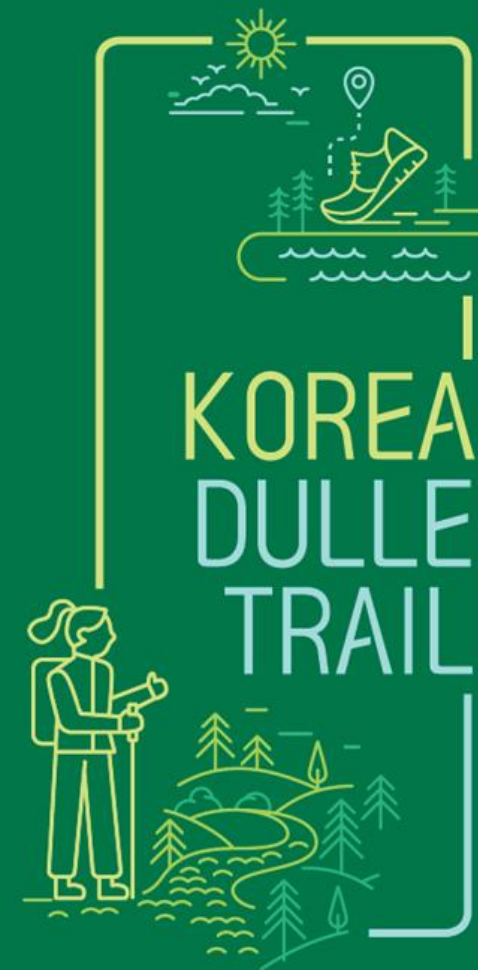
A road of ecology and history where you get to encounter the sun setting over the ocean and life at the tidalflat

NAMPARANG TRAIL

A romantic path on which you will experience the beauty of the South Sea while passing by Hallyeosudo Waterway and the islands of the archipelago

DMZ PEACE TRAIL

A trail of harmony and peace where you will encounter the wounds of painful history contrasted against living ecological resources



KTO's responsible tourism Projects



KTO's Tourism ODA + Responsible Tourism

◆ KOPIST(Korea Partnership Initiative on Sustainable Tourism) Launched in 2019

◆ Symbol of KOPIST



◆ KOPIST Mission

Tourism is a single operation,
but cooperation between two or more countries



Completed Project

Sri Lanka ('22~'24, 2.1 billion won)

- The Community- Tourism Development Project in Habarana
- 2018 KOPIST 1st Place Country
- Location : Habarana , North Central Province
- RD signed at February, 2023
- Development of National Master Plan
- Improving Tourism Infrastructure , Empowering Human capacity
 - Tourism Service Centre, Welcome Centre
- Developing Tour Products



Ongoing Project

Philippines('23~'27, 3.5 billion won)

- The Community Based Tourism Villages Development in Luzon Island
- 2019 KOPIST 1st Place Country
- Location : Luzon Island
- RD signed at April, 2024
- Establishment of Community based Tourism villages
- Dispatch of Korean experts(2025~2027)

RECORD OF DISCUSSION BETWEEN THE KOREA TOURISM ORGANIZATION OF THE REPUBLIC OF KOREA AND THE DEPARTMENT OF TOURISM OF THE REPUBLIC OF THE PHILIPPINES ON THE DURE FARM TOURISM DEVELOPMENT IN LUZON ISLAND OF THE REPUBLIC OF THE PHILIPPINES

The Korea Tourism Organization (hereinafter referred to as the "KTO") of the Republic of Korea and the Department of Tourism (hereinafter referred to as the "DOT") of the Republic of the Philippines, which individually are referred to as "Each Party" and collectively as "the Parties," have had a series of discussions on the Dure Farm Tourism Development in Luzon Island of the Republic of the Philippines (hereinafter referred to as the "Project"), based on the proposals outlined in Documents No. 2021-1395 delivered from the Ministry of Foreign Affairs of the Republic of the Philippines to the Korean Government on April 5, 2021.

The Parties have agreed to the terms of reference, attached herewith, for implementing the Project and, in witness whereof, the Parties, the undersigned, as being duly authorized by their respective Governments, have signed this Record of Discussions (hereinafter referred to as the "ROD") with an understanding that the Project will proceed with implementation based on the funding allocated for the corresponding activities of the Project by the Korean Government.

Prepared and signed on _____, 2024 by the representatives of the Parties.


 Ma Esperanza Christina Garcia Frasco
 Secretary
 Department of Tourism
 Republic of the Philippines


 Youngchoong Seo
 Acting President
 Korea Tourism Organization
 Republic of Korea

