

IHS CLINICAL AND COMMUNITY WORKFORCE SUMMIT

ALZHEIMER'S AND ELDER CARE

KNOWLEDGE, COMPASSION, AND
COMMUNITY AT WORK

MARCH 10 -12, 2026 ~ DENVER, CO





WELCOME

Dear Colleagues,

It is our great pleasure to welcome you to the Indian Health Service (IHS) Clinical and Community Workforce Summit. This gathering presents an exciting opportunity to assemble and hear from nationally recognized speakers, health care providers, tribal leaders, and officials committed to improving health outcomes in American Indian and Alaska Native communities.

This year's Summit, themed "Alzheimer's and Elder Care: Knowledge, Compassion, and Community at Work," centers on addressing the unique challenges and opportunities surrounding elder care and memory health in tribal and urban Indian communities. Together, we will explore innovative approaches, share research, and highlight promising practices that strengthen our collective ability to serve elders with dignity and respect.

The Summit brings together presenters and participants from across the nation to engage in meaningful dialogue, professional development, and collaboration. At the heart of this gathering is our shared commitment to the care and wellbeing of older adults. Our elders carry culture, language, history, and wisdom. Supporting their physical, emotional, and spiritual health is not only a mission responsibility — it is a reflection of our values and our dedication to the communities we serve.

We thank you for your participation, your leadership, and your continued commitment to advancing quality care in American Indian and Alaska Native communities. We look forward to a Summit filled with learning, connection, and renewed purpose.

With gratitude,

IHS Alzheimer's Program Team

2026 Indian Health Service Clinical and Community Workforce Summit

“Alzheimer’s and Elder Care: Knowledge, Compassion, and Community at Work”

March 10-12, 2026
Denver, Colorado

Continuing Education Information

The 2026 Indian Health Service Clinical and Community Workforce Summit is the nation’s premier opportunity to assemble and hear from nationally recognized speakers, health care providers, tribal leaders, and officials committed to improving health outcomes in American Indian and Alaska Native (AI/AN) communities. This year’s Summit, themed “Alzheimer’s and Elder Care: Knowledge, Compassion, and Community at Work,” will focus on addressing the unique challenges and opportunities surrounding elder care and memory health in tribal communities.

Conference Objectives:

At the end of this activity, the health care teams will be able to:

- Advance culturally grounded approaches to Alzheimer’s and elder care in American Indian and Alaska Native communities.
- Strengthen workforce knowledge, collaboration, and competence to improve elder and memory health outcomes.
- Share evidence-informed and community-centered practices that support compassionate, high-quality care.

Target Audience:

Health care teams from IHS, Tribal, and Urban programs, community health providers, and clinicians (Physicians, Nurses, Pharmacists, Social Workers, Psychologists, and all other disciplines).

Guidelines for Continuing Education Credit:

- ◆ There are no fees to participate.
- ◆ Continuing Education (CE) is available for Physicians, Nurses, Pharmacists, Social Workers, and Psychologists who participate in this in-person activity.
- ◆ To obtain continuing education credit, you must:
 - Be present no later than 5 minutes from the start of each CE approved presentation and attend the entire presentation. No partial credit will be awarded.
 - Complete the online Activity Evaluation and CE Request. The link to the evaluation will be emailed to registered participants at the close of the conference and will be available only until March 19, 2026.
 - CE Certificates will be issued by the end of April via email.
 - For assistance, please contact Jamie Olsen at jamie.olsen@ihs.gov.

Accreditation:



JOINTLY ACCREDITED PROVIDER™
INTERPROFESSIONAL CONTINUING EDUCATION

In support of improving patient care, IHS Clinical Support Center is jointly accredited by the Accreditation Council for Continuing Medical Education (ACCME), the Accreditation Council for Pharmacy Education (ACPE), and the American Nurses Credentialing Center (ANCC), to provide continuing education for the health care team.



IPCE CREDIT™

This activity was planned by and for the health care team, and learners will receive up to 16.25 Interprofessional Continuing Education (IPCE) credits for learning and change.

Physicians

The IHS Clinical Support Center designates this live activity for a maximum of 16¼ AMA PRA Category 1 Credits™. Physicians should claim only the credit commensurate with the extent of their participation in the activity.

Pharmacists

This activity provides up to 16.25 hours of knowledge-based continuing pharmacy education credit (CPE) with the UAN JA4008177-0000-26-012-L99-P.

Credit will be uploaded to the NABP CPE Monitor within 30 days after the activity completion. It is the responsibility of the pharmacist to provide the correct information (NABP ID and DOB [MMDD]) in order to receive credit.

Nurses

This activity is designated up to 16.25 contact hours for nurses.

Social Workers



As a Jointly Accredited Organization, the IHS Clinical Support Center is approved to offer social work continuing education by the Association of Social Work Boards (ASWB) Approved Continuing Education (ACE) program. Organizations, not individual courses, are approved under this program. Regulatory boards are the final authority on courses accepted for continuing education credit. Social workers completing this course receive 16.25 clinical continuing education credits.

Psychologists



Continuing Education (CE) credits for psychologists are provided through the co-sponsorship of the American Psychological Association (APA) Office of Continuing Education in Psychology (CEP) and the IHS Clinical Support Center. The IHS Clinical Support Center maintains responsibility for the content of the program. Psychologists completing this course receive 16.25 continuing education credits.

Disclosure Statement: As a jointly accredited provider of continuing education, the IHS Clinical Support Center must ensure balance, independence, objectivity, and scientific rigor in its educational activities. Course directors/coordinators, planning committee members, faculty, reviewers and all others who are in a position to control the content of this educational activity are required to disclose the existence of all financial relationships with ineligible companies within the prior 24 months. Safeguards against commercial bias have been put in place. Faculty will also disclose any off-label and/or investigational use of pharmaceuticals or instruments discussed in their presentation. All those who are in a position to control the content of this educational activity have completed the disclosure process and have indicated that they do not have any relevant financial relationships or affiliations with any manufacturers or commercial products to disclose. There is no commercial interest support for this educational activity.



Registration and Information Desk - 8:00 AM – 4:30 PM (Level 2)

Elder Care Poster Session - ALL DAY - Colorado Salon (A-D)

8:00 AM – 12:00 PM

Advancing Excellence in Nursing Care for Dementia

Colorado Salon (G-H)

This session prepares nurse clinicians to identify and support patients and families experiencing cognitive changes, including Alzheimer's disease and dementia, using a compassionate and culturally safe approach. Through hands-on, case-based learning, participants will strengthen assessment skills, enhance safety, and promote independence and quality of life across the dementia care continuum.

Presenters:

Mary Koithan, PhD, RN, CNS-BC, FAAN
Larry Newman, DNP, AGNPPC, PMHNP

8:00 AM – 12:00 PM

Building Indian Health Dementia Models of Care: Introduction & Grantee Models of Care Presentations

Colorado Salon (A-D)

This session introduces the Building Indian Health Dementia Models of Care initiative and highlights interprofessional, grantee-developed models aligned with the five NOFO drivers of comprehensive dementia care. Presenters will share how multidisciplinary teams strengthen early identification, care coordination, culturally relevant services, and family support in Tribal and Urban Indian communities.

Facilitator:

Jamie Olsen, Management Analyst, Indian Health Service

Presenters:

IHS Alzheimer's Dementia Models of Care Grantees. *Presenter list is available on the IHS Summit Registration website: <https://ihssummit2026.vfairs.com/>*

9:00 AM – 12:00 PM

Improving CHR Dementia Care Competencies

Colorado Salon (I-J)

This workshop equips Community Health Representatives (CHRs) to recognize early cognitive changes, support caregivers, and connect families to clinical and community resources. Through hands-on practice and communication strategies, participants will strengthen skills in screening, referral, and culturally grounded care.

Presenters:

Michelle Archuleta, MS, MA | Taryn Watson, MED

12:00 PM – 1:00 PM

Break: LUNCH ON YOUR OWN

1:00 PM – 3:00 PM

Elder Health and Dementia: Lightning Roundtables

Colorado Salon (A-D)

This interactive session features rotating roundtables on key elder care topics, including caregiving support, dementia diagnosis, symptom tracking tools, decision-making capacity, outreach, medication management, and advance care planning. Participants will engage in facilitated discussions to share practical strategies and real-world solutions for clinical and community settings.

Presenters:

LCDR Maria Bellantoni, MD, USPHS | Marlene Taha | Barbara Worthington
Kuang-Ning "Annie" Huang, MD, MPH | Ron Eppes | Amber Hoon, LPN
Morgan Masterson, PharmD, BCGP | Gary Vaughn, MD | Bruce Finke, MD
Michele F. Bellantoni, MD, CMD | Julia Bellantoni, MD | Nora Downey, BS

TUESDAY, March 10

3:15 PM – 4:00 PM

Elder Care Poster Presentations

Colorado Salon (A-D)

This poster session showcases innovative elder care and dementia strategies across IHS, tribal, and urban Indian health systems. Presentations highlight early identification, culturally grounded care, caregiver support, and workforce-driven solutions that strengthen coordination and advance compassionate, sustainable care for American Indian and Alaska Native elders.

Presenters:

Daniel J. Calac, MD, MPH		Valerie Bill
Alisha Parks Shell, CMA, THW, MBA		Morgan Masterson, PharmD, BCGP
Kimberly C. Allen, BSN, RN		Melissa Blind, PhD
Jinelle Goodwin, BSN, RN, CARN, CADS		

4:15 PM – 5:00 PM

IHS GeriScholars and Geri Nurse Fellows Meeting

Colorado Salon (A-D)

This session brings together current and alumni IHS Geriatric Nurse Fellows and GeriScholars to celebrate shared accomplishments, strengthen professional networks, and advance the future of geriatric care within I/T/U health systems. Designed as both a reflective and forward-looking forum, the session will highlight the impact of fellowship and scholar programs on clinical excellence, leadership development, and health system influence.

SUMMIT DAY 1:

WEDNESDAY, March 11

Registration and Information Desk - 8:00 AM – 4:30 PM (Level 2)

Elder Care Poster Session - ALL DAY - Level II Lobby (Pre-Function)

9:00 AM – 9:10 AM

Introductions: Posting of Colors and Opening Prayer

Colorado Ballroom E-F

Presenters:

Nichole Cottier, Acting Director, Division of Clinical and Community Services
 Denver Indian Health and Family Services, Elder Andy Cozad, Kiowa

9:10 AM – 9:30 AM

Welcome by Dr. Loretta Christensen, MD, MBA, MSJ, FACS

Colorado Ballroom E-F

Chief Medical Officer, Indian Health Service

9:30 AM – 9:50 AM

Opening Remarks by Dr. Leonard D. Thomas, MD

Colorado Ballroom E-F

Albuquerque Area Director, Indian Health Service

9:50 AM – 10:00 AM

Cultural Presentation

Colorado Ballroom E-F

Denver Indian Health and Family Services, Doug Good Feather

WEDNESDAY, March 11



10:00 AM – 10:45 AM

Opening Plenary: Health and Aging

Colorado Ballroom E-F

Keynote by Dr. Gary Ferguson II, ND (Unangax/Aleut)

10:45 AM - 11:00 AM

Break: Transition to Concurrent Trainings

Summit Concurrent Trainings

11:00 AM – 12:00 PM

Implementing Dementia Programs in Practice: Tools, Strategies, and the Virtual Dementia Tour

Colorado Salon (A-B)

This session provides practical tools and strategies to strengthen dementia-capable services, including workflow improvements, caregiver engagement, culturally responsive practices, and the Virtual Dementia Tour. Participants will leave with actionable steps to enhance screening, referrals, and dementia-friendly care.

Presenters:

Amber Hoon, LPN

11:00 AM – 12:00 PM

Protecting the Circle: Vaccinations to Safeguard Our Elders

Colorado Salon (C-D)

Protecting the Circle: Vaccinations to Safeguard Our Elders provides practical, up-to-date adult immunization guidance to reduce preventable illness among Elders, especially during respiratory virus season. Participants will review key ACIP updates and strategies to promote safe, effective vaccination at every encounter.

Presenters:

CAPT Holly Van Lew, PharmD, BCPS, AAHIVP

11:00 AM – 12:00 PM

Cognition in Primary Care Session 1: Detect, Evaluate, and Diagnose Cognitive Symptoms

Colorado Salon (I-J)

This session empowers primary care providers practicing across the IHS system to detect and evaluate cognitive concerns and make a diagnosis of mild cognitive impairment or dementia.

Presenters:

Jaqueline Raetz, MD

11:00 AM – 12:00 PM

Alzheimer's Disease and Related Dementia Among Older American Indian and Alaska Native Adults: Emerging Research on Risk Factors and Opportunities (Practice Considerations)

Colorado Salon (G-H)

Drs. Joan O'Connell will present research on Alzheimer's Disease and Related Dementias (ADRD) among AI/AN adults, highlighting risk factors and hospital use. Drawing from IHS, Medicare, and BRFSS data, the session examines mid- and late-life risks such as diabetes, depression, hearing loss, and air pollution, with cross-population comparisons.

Presenters:

Joan O'Connell, PhD

12:00 PM - 1:00 PM

Break: LUNCH ON YOUR OWN

WEDNESDAY, March 11



1:00 PM – 2:15 PM

Summit Plenary - Advance Care Planning for Elders: Communication Strategies for Culturally Grounded, Patient-Centered Care

Colorado Ballroom E-F

This plenary panel features IHS and partner leaders sharing updates on Advance Care Planning programs for elders. Panelists will highlight culturally grounded, patient-centered communication strategies and practical approaches to integrating ACP into routine care while honoring elders' values and traditions.

Presenters:

Jolie Crowder, PhD, MSN, RN, CCM		R. Turner Goins, PhD
Kuang-Ning "Annie" Huang, MD, MPH		Kelsey Two Bears, PA-C
Gary Vaughn, MD		Marlene Taha Nora Downey, BS

2:15 PM - 2:30 PM

Break: Transition to Concurrent Trainings

Summit Concurrent Trainings

2:30 PM - 3:30 PM

Advance Care Planning: MY WAY Program

Colorado Salon (A-B)

The Eastern Band of Cherokee Indians (EBCI) will introduce a culturally tailored, evidence-based MY WAY ACP model. Participants will learn practical tools and strategies to support values-based conversations, improve planning document completion, and integrate culturally respectful ACP practices into clinical and community settings.

Presenters:

R. Turner Goins, PhD
Kelsey Two Bears, PA-C

2:30 PM - 3:30 PM

Cognition in Primary Care Session 2: Manage Dementia as it Progresses

Colorado Salon (C-D)

This session prepares primary care providers to develop treatment and ongoing management plans and counsel patients and families impacted by cognitive change and dementia while respecting cultural values.

Presenters:

Jaqueline Raetz, MD

2:30 PM - 3:30 PM

Health Literacy for Older Adults

Colorado Salon (I-J)

This workshop explores the importance of health literacy and strategies to strengthen communication between health care providers, patients, and caregivers. Participants will examine how low health literacy contributes to health disparities and learn practical tools, including the TAP-CV mnemonic from the AHRQ Universal Health Literacy Precautions Toolkit, to improve understanding and care outcomes.

Presenters:

Taryn Watson, MED
Megan Russell, BS
Emily Tahy-Ceballos, EdD, MPH

Summit Concurrent Trainings

2:30 PM - 3:30 PM

Denver Ballroom

PAK - Moving For Better Brain Health

This session highlights engaging, evidence-based activities that support brain health across the lifespan. Participants will explore practical strategies—such as cognitive games, movement, social connection, and creative exercises—to enhance memory, focus, and overall well-being in everyday settings.

Presenters:

Scott Robison, MEd (Mvskoke Nation / Muscogee) | Theresa Clay, MS

3:30 PM - 3:45 PM

Break: Transition to Concurrent Trainings

3:45 PM - 4:45 PM

Colorado Salon (A-B)

The American Indigenous Cognitive Assessment (AMICA) Project

The American Indigenous Cognitive Assessment (AMICA) project is developing a culturally appropriate dementia evaluation toolkit for Indigenous communities nationwide. Created in partnership with the Red Lake Nation and Oneida Nation, the toolkit includes cognitive, health, caregiver, and daily living assessments and will be piloted in 2026.

Presenters:

Melissa Blind, PhD

3:45 PM - 4:45 PM

Colorado Salon (C-D)

Calling Primary Care! Co-Designing a Dementia Navigation Tool with Ariadne Labs

Primary care teams often lack practical tools for recognizing and managing dementia in real-world visits. Ariadne Labs is developing a point-of-care “map” to guide evaluation, diagnosis, and communication around cognitive changes. In this hands-on co-design session, participants will explore the tool, provide feedback, and help shape a more practical approach to dementia care.

Presenters:

Bruce Finke, MD | Umila Singh, MFA | Nora Downey, BS

3:45 PM - 4:45 PM

Colorado Salon (I-J)

Integrating CHRs into the Continuum of Elder Care

This workshop equips Community Health Representatives (CHR) to recognize early cognitive changes, strengthen referral pathways, and support patients and caregivers using culturally grounded practices. Through hands-on activities, including Mini-Cog practice and communication strategies, participants will build skills in screening, caregiver support, and connecting families to needed health care and community resources.

Presenters:

Michelle Archuleta, MS, MA

3:45 PM - 4:45 PM

Colorado Salon (G-H)

Building Brain-Healthy Habits

Building Brain-Healthy Habits, presented by the Alzheimer's Association®, offers research-based guidance on protecting brain health at every age. Participants will learn practical steps to create a personalized action plan focused on diet, physical activity, sleep, and other healthy habits, based on the 10 Healthy Habits for Your Brain and the latest research, including findings from the U.S. POINTER study.

Presenters:

Bobbie D'Addario, BSW

Registration and Information Desk - 8:00 AM – 4:30 PM (Level 2)

Elder Care Poster Session - ALL DAY - Level II Lobby (Pre-Function)

Summit Concurrent Trainings

9:00 AM – 10:15 AM

Understanding Psychosis Among Indigenous Peoples of North America

Colorado Salon (A-B)

This session examines psychosis through an Indigenous North American lens, highlighting culturally grounded understanding, respectful assessment, and effective engagement. Participants will explore how historical trauma and Indigenous worldviews influence experiences of psychosis and learn practical strategies for culturally safe screening, differential assessment, and relationship-centered care aligned with Indigenous values.

Presenters:

D. Richard Wright, Seminararian, Therapist, Elder

9:00 AM – 10:15 AM

Brain Injury Across the Lifespan: A Discussion on Prevention, Recognition, and Treatment

Colorado Salon (C-D)

This session reviews key epidemiologic patterns and risk factors for brain injury among American Indian and Alaska Native populations. Participants will learn to recognize early signs, apply culturally responsive, trauma-informed screening tools, and strengthen care coordination and referrals within tribal and urban Indian health systems.

Presenters:

Anna Knight, MS, APRN, FNP-C | LCDR Maria Bellantoni, MD, USPHS

9:00 AM – 10:15 AM

Applying the IA² Approach to the 4Ms Framework

Colorado Salon (I-J)

This session provides an overview of IA² resources, highlighting the adapted 4Ms Framework for Age-Friendly Care tailored for American Indian and Alaska Native communities. Approved by IHI, the adaptation updates language and imagery and serves as a shared tool for providers, Elders, and families to communicate what matters most for the Elder's health.

Presenters:

Bill Benson | Ron Eppes

9:00 AM – 10:15 AM

Community-Based Programs to Support Dementia Caregivers

Colorado Salon (G-H)

This session highlights findings from the IHS report on dementia caregiving needs in AI/AN communities and introduces the Caregiver Coach Framework (Head, Heart, Hands). Participants will explore key principles and example programs that strengthen culturally responsive caregiver support and improve quality of life for patients and families.

Presenters:

Amber Hoon, LPN | Jolie Crowder, PhD, MSN, RN, CCM

10:15 AM - 10:30 AM

Break: Transition to Concurrent Trainings

Summit Concurrent Trainings

10:30 AM – 11:45 AM

Monoclonal Antibodies for Alzheimer's Disease: Updates in Treatment & the Tuba City Regional Health Care Model

Colorado Salon (A-B)

This session reviews recent advances in monoclonal antibody therapies for Alzheimer's disease, including patient selection, monitoring, and safety considerations. It also highlights Tuba City Regional Health Care Corporation's implementation of a coordinated dementia treatment program within a tribal health system.

Presenters:

Wade S. Harris, MD		Monica Begay, BSPH, RMA
Kimiko Domoto-Reilly, MD		Michelle Maloney, BSHA, CCMA, CMAA

10:30 AM – 11:45 AM

Motivational Interviewing: Evidence-Based Strategies to Support Behavior Change

Colorado Salon (C-D)

This session equips participants with motivational interviewing skills and behavior change strategies to help Elders live safely and independently at home. Attendees will apply OARS techniques, assess readiness using the Transtheoretical and Health Belief Models, and develop patient-centered SMART action plans to support meaningful, sustainable change.

Presenters:

Lori Winchell, DrPH, APRN, CNP, CWP

10:30 AM – 11:45 AM

Alzheimer's Disease and Related Dementia Among Older American Indian and Alaska Native Adults: Emerging Research on Risk Factors and Opportunities (Practice Considerations) - Repeat Session

Colorado Salon (I-J)

Drs. Joan O'Connell and Luohua Jiang will present research on Alzheimer's Disease and Related Dementias (ADRD) among AI/AN adults, highlighting risk factors and hospital use. Drawing from IHS, Medicare, and BRFSS data, the session examines mid- and late-life risks such as diabetes, depression, hearing loss, and air pollution, with cross-population comparisons.

Presenters:

Joan O'Connell, PhD		Luohua Jiang, MD, PhD
---------------------	--	-----------------------

10:30 AM – 11:45 AM

Elder Abuse and Elder Justice: Identification, Prevention, and Response

Colorado Salon (G-H)

This session will focus on recognizing, responding to, and preventing elder abuse in tribal communities. Participants will explore common forms of elder abuse, culturally grounded indicators of harm, and culturally relevant response strategies for Indian Country. The presentation will also highlight key resources for tribal and non-tribal professionals, including IHS guidance and forensic examination considerations when working with older adults.

Presenters:

Peggy Jo Archer

11:45 AM - 12:45 PM

Break: LUNCH ON YOUR OWN

THURSDAY, March 12

12:45 PM – 2:00 PM

Summit Plenary - Advancing Dementia Care: Evidence-Informed Services, Research, and Practice

Colorado Ballroom E-F

Effective person-centered care of individuals with Alzheimer's disease requires seamless collaboration across disciplines, settings and stages of disease. This educational activity will examine how interprofessional teamwork among primary care clinicians, neurologists, geriatricians, advanced practice providers, nurses, social workers and care coordinators can improve early recognition, diagnostic accuracy and longitudinal management of Alzheimer's disease.

Presenters:

Sheena Aurora, MD

2:00 PM - 2:15 PM

Break: Transition to Summit Trainings

Summit Plenary Trainings

2:15 PM – 2:45 PM

PAK - Moving for Better Brain Health

Colorado Ballroom E-F

Presenters:

Scott Robison, MEd (Mvskoke Nation / Muscogee) | Theresa Clay, MS

2:45 PM – 3:45 PM

Plenary Training - Live ECHO: Using Technology to Facilitate Diagnosis and Treatment of Dementia

Colorado Ballroom E-F

Join the Northwest Portland Area Indian Health Board for a live Indian Country ECHO session featuring its Dementia ECHO program. Through an interactive, case-based discussion, participants will explore practical, culturally responsive strategies for early recognition, caregiver support, and care coordination across IHS, tribal, and urban Indian settings.

Presenters:

Jessica Rienstra, NP | Amber Hoon, LPN | Miguel Flores, Jr., LISAC, CSOT, CEO
CDR Eric Metterhausen, PharmD, USPHS

3:45 PM - 4:00 PM

Break: Transition to Summit Plenary

4:00 PM - 5:00 PM

Close of Summit

Colorado Ballroom E-F

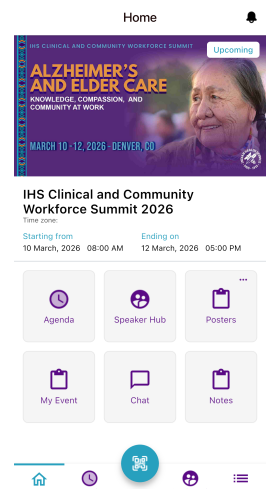
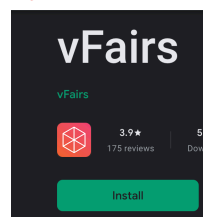
Special Presentation: Doug Good Feather, End of Event Remarks, Elder Andy Cozad (Kiowa), Removal of Colors

MOBILE AGENDA + APP DOWNLOAD



vFairs (US)
All-in-one app for events
vFairs LLC
Designed for iPhone
★★★★★ 3.0 - 3.3 Ratings
Free
[View in Mac App Store](#)

Google Play Games



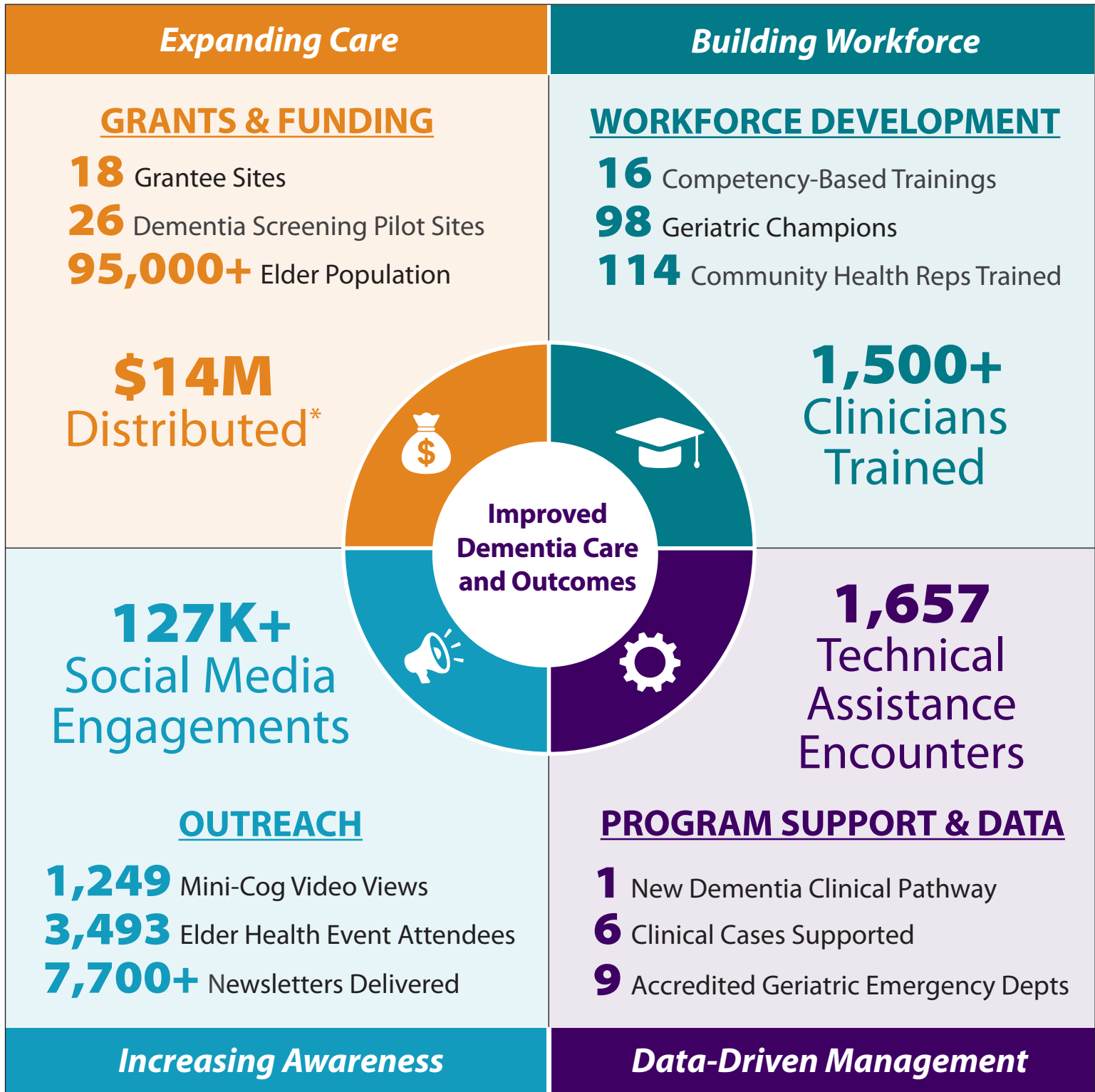


IMPACT OF ELDER HEALTH AND ALZHEIMER'S PROGRAM

American Indian and Alaska Native elders experience high dementia rates yet face significant disparities in early detection and culturally responsive care. In 2021, IHS received first-time funding to improve dementia care and services.



A tribally driven, coordinated approach



*2022-2028 grant obligations and 2022-2025 program distribution

Session Tracking Form

Keep track of the sessions you attend using this form.
You will need this tracking form to help you complete the online activity evaluation and CE credit request.

Credit Types Awarded: CME, CNE, CPE, ASWB, APA

SESSIONS	Credit Hours Awarded	Check Sessions Attended
PRE SUMMIT: Tuesday, March 10, 2026		
<i>CONCURRENT SESSIONS (8:00 am – 12:00 pm) – choose one:</i>		
Advancing Excellence in Nursing Care for Dementia	3.75	
Building Indian Health Dementia Models of Care: Introduction & Grantee Models of Care Presentations	3.75	
Wednesday, March 11, 2026		
Opening Plenary: Health and Aging	0.75	
<i>CONCURRENT SESSIONS (11:00 am – 12:00 pm) – choose one:</i>		
Implementing Dementia Programs in Practice: Tools, Strategies, and the Virtual Dementia Tour	1.00	
Protecting the Circle: Vaccinations to Safeguard Our Elders		
Cognition in Primary Care Session 1: Detect, Evaluate, and Diagnose Cognitive Symptoms		
Alzheimer’s Disease and Related Dementia among Older American Indian and Alaska Native Adults: Emerging Research on Risk Factors and Opportunities (Practice Considerations)		
Summit Plenary: Advance Care Planning for Elders: Communication Strategies for Culturally Grounded, Patient-Centered Care	1.25	
<i>CONCURRENT SESSIONS (2:30 pm – 3:30 pm) – choose one:</i>		
Advance Care Planning: MY WAY Program	1.00	
Cognition in Primary Care Session 2: Manage Dementia as it Progresses		
Health Literacy for Older Adults		
PAK - Moving for Better Brain Health		
<i>CONCURRENT SESSIONS (3:45 pm – 4:45 pm) – choose one:</i>		
The American Indigenous Cognitive Assessment (AMICA) Project	1.00	
Calling Primary Care! Co-Designing a Dementia Navigation Tool with Ariadne Labs		
Integrating CHRs into the Continuum of Elder Care		
Building Brain-Healthy Habits		

Thursday, March 12, 2026

CONCURRENT SESSIONS (9:00 am – 10:15 am) – choose one:

Understanding Psychosis Among Indigenous Peoples of North America	1.25	
Applying the IA ² Approach to the 4Ms Framework		
Brain Injury Across the Lifespan: A Discussion on Prevention, Recognition, and Treatment		
Community-Based Programs to Support Dementia Caregivers		

CONCURRENT SESSIONS (10:30 am – 11:45 am) – choose one:

Monoclonal Antibodies for Alzheimer's Disease: Updates in Treatment & the Tuba City Regional Health Care Model	1.25	
Motivational Interviewing: Evidence-Based Strategies to Support Behavior Change		
Alzheimer's Disease and Related Dementia among Older American Indian and Alaska Native Adults: Emerging Research on Risk Factors and Opportunities (Practice Considerations) - Repeat		
Elder Abuse and Elder Justice: Identification, Prevention, and Response		

Summit Plenary: Advancing Dementia Care: Evidence-Informed Services, Research, and Practice	1.25	
Plenary Training: Live ECHO: Using Technology to Facilitate Diagnosis and Treatment of Dementia	1.00	

Maximum Summit CE Credits Awarded: 16.25

This link for the online activity evaluation and request for CE credits will open Thursday, March 12th and close March 19th.
The link will not reopen after March 19th, 2026.

<https://www.surveymonkey.com/r/EVAL26ICCWS>





ALZHEIMER'S AND ELDER CARE: KNOWLEDGE, COMPASSION, AND COMMUNITY