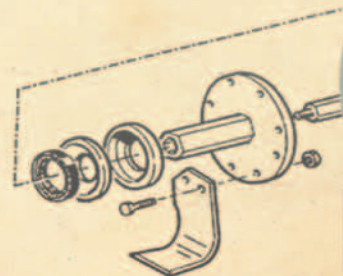


Multivator

The **Multivator** is a rotary powered cultivator for use in a wide variety of vegetable and field crops. Multivator is the premier name in rotary powered cultivation. The **Multivator** is custom built for all applications, and sold through a network of Multivator dealers across North America.



A **MULTIVATOR** is a high-clearance rotary tillage machine designed for inter-row cultivation of vegetable, nursery, fruit and field crops. Mounted on the three-point hitch of a tractor and powered by the tractor PTO, the **MULTIVATOR** transmits power to a selected number of rotary tiller heads each equipped with blades that cultivate the ground between

Use of a **MULTIVATOR** gives positive control over this important area between plant rows, reducing or eliminating the need for herbicides, and creating a soil condition that will absorb and retain moisture. The versatility

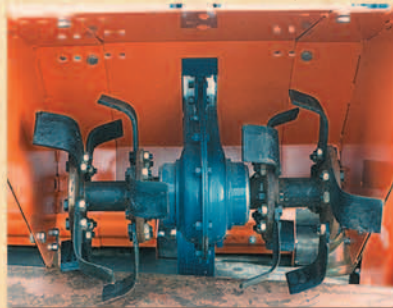
It also allows for inter-row spaces that may shrink as plants grow and expand into the row. There are three basic **MULTIVATOR** models to suit different tractors, varying ground conditions, and small, medium, or large



Model FL with 2 heads, clearing row middles during strawberry renovation



Model FP 66" frame with 2x12-16" tillage heads



Detail of the blades, model FP. Hubs are easily added or removed to change head width.

rows of growing crops. Weed growth is eliminated and crusted or compacted soils are transformed into a desirable tilth.

of the machine allows its use at all critical stages of plant development, in a wide variety of crops on differing row centers.

applications. The following table gives general specifications for these models. More details can be found in the product price list.

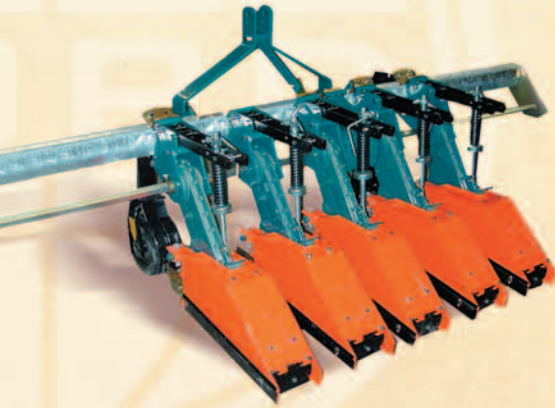
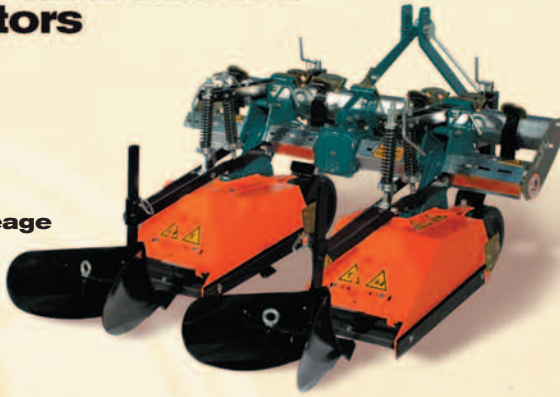
Explore the Full Line of

Multivator Cultivators

Model

FL

Small Acreage
Cultivator



Model

FLA

High Clearance
Cultivator



Model

FP

Medium Acreage
Cultivator



Model

FPSR

Commercial
Growing
Cultivator

PRODUCT FEATURES



SIMPLICITY

Simplicity – Tillage heads are mounted on the frame and secured by two bolts. A hexagonal bar drives all heads from a single gearbox. Each head floats independently to compensate for uneven ground, and extra down pressure may be applied to assist penetration in hard ground. Every machine comes with two adjustable gauge wheels to maintain frame height.



VERSATILITY

Versatility – Loosening the two securing bolts and sliding the head to the desired position adjusts the location of each head. Adding or removing blades and shielding easily changes the head size to another tillage width. Optional equipment includes ridge attachments that may be fitted behind each head for throwing tilled soil back on the ridge, and granular fertilizer boxes.



ADAPTABILITY

Adaptability – The **MULTIVATOR** can be used in a wide variety of specialty crops including lettuce, carrots, onions, spinach, and celery. It is used successfully in nursery stock, cotton, soybeans, perennials, and medicinal herbs, and is an essential renovation tool for many strawberry growers. If a crop is grown on flat land, on beds, or even on plastic, the versatile **MULTIVATOR** rotary tiller is the best implement to use for inter-row cultivation.

Model	HP Range	Ground Clearance	Min/Max Head Width	Hex Shaft Diameter	Drive-case Roller Chain Spec
FL	15-50	16"	5.5" 32"	30mm (1-1/8")	12B (#60HD)
FLA	15-50	20"	5.5" 32"	30mm (1-1/8")	12B (#60HD)
FP	25-100	20"	9" 32"	41mm (1-5/8")	16B (#80HD)
FPA	25-100	25"	9" 32"	41mm (1-5/8")	16B (#80HD)
FPXA	25-100	32"	9" 32"	41mm (1-5/8")	16B (#80HD)
FPSR	25-150	20"	12" 32"	50mm (2")	20B (#100HD)
FPSRXA	25-150	32"	12" 32"	50mm (2")	20B (#100HD)