

DYNA-TRIM

Series DT5300

HYDRAULIC DRIVEN



It is no longer necessary to mow both ways in your orchard. With the Edwards Hydraulic DYNA-TRIM attachment you can mow in one direction and reach between the trees to get all the grass and weeds in one operation. The DYNA-TRIM also works well for the control of weeds in vineyards, berries and trellised orchards. This can be mounted in many different ways. It can be mounted to the edge of an offset mower, or a tool bar. It can be mounted to a front 3-point hitch, or a loader. Having the DYNA-TRIM mounted to the front of the tractor allows more operator control, visibility and it allows the rear 3-point pull a mower at the same time.

Features

- * Adapts to most tractor hydraulic systems
- * Mounts to a variety of mower frames, tool bars, loaders or to a 3-point hitch
- * Left hand units are available for two row applications
- * Rugged pivot joints give freedom of movement
- * Direct coupled hydraulic motor drive



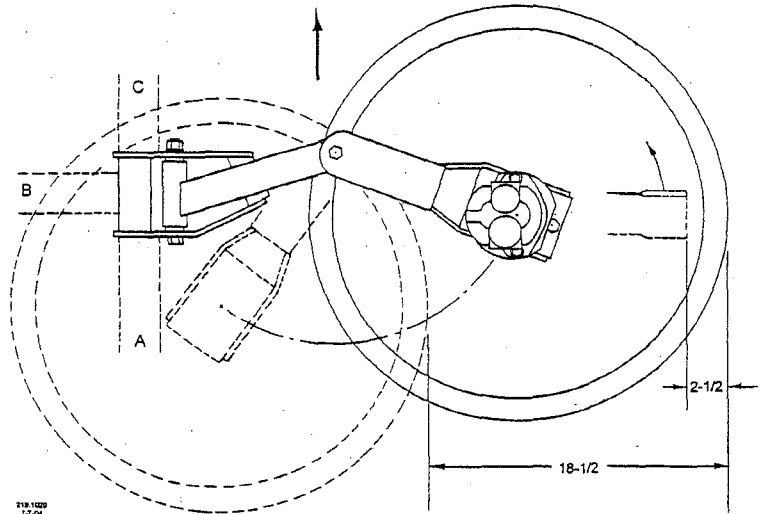
4312 Main Street Union Gap WA 98903
 509-248-1770 800-452-5151
 Fax: 509-248-9721
 Web Site: www.edwards-equip.com
 E-mail: sales@edwards-equip.com

Hydraulic DYNA-TRIM

Series DT5300 Specifications

OPERATING DATA

Cutting width - inches	21
Cutting height - minimum inches	1-3/4
Bumper wheel diameter - inches	26
Blade speed - RPM	2000
Blade tip speed - FPM	10,996
Blade rotation (as viewed from above)	
Right-hand mount	Counter-clockwise
Left-hand mount	Clockwise



MOUNTING OPTIONS

- A Front mounted on mowers
Forward mounted on rear tool bar
- B Front 3-point hitch mounting
Rear 3-point hitch mounting
- C Rear mounted on flail or rotary mowers

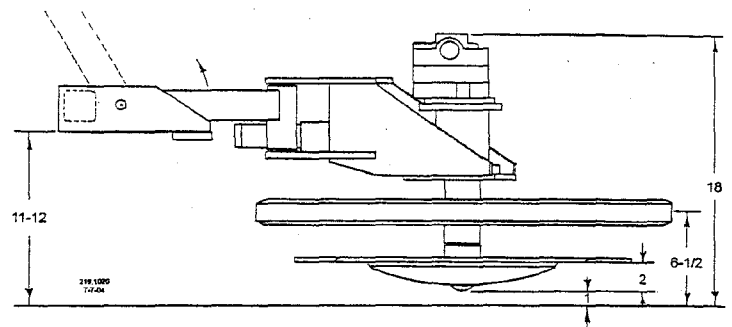
HYDRAULICS

Hydraulic motor type	Gear
Motor rotation	Bi-directional

Volumetric Displacements available:

Cubic inches per revolution	.5	.75	1.0	1.25	1.50
GPM required @ 2000 RPM	3.9	5.8	7.8	9.7	11.7

Maximum input pressure, PSI	2500
-----------------------------	------



STANDARD FEATURES

- Direct coupled hydraulic drive.
- Blades are reversible for maximum blade life.

Thomas Bros. Equipment Sales Inc
41764 Red Arrow Hwy, Paw Paw, MI 49079
269-657-3735 Fax 269-657-2110
Toll Free: 866-214-6135
email: tbrofab@gmail.com
www.thomasbrosequipmentsales.com

Specifications and design subject to change without notification.

BRUSH SPIDER **Series BS8300**



The EDWARDS BRUSH SPIDER now enables you to clean around trees and in between trees in orchard rows without extra tractor trips or hand raking. The BRUSH SPIDER sweeps pruning's, leaves and other debris from the tree row into the path of a mower or shredder. It is built with durable polyurethane sweeping fingers to provide long life with action that is gentle on trees and irrigation risers. This unit can be attached to the side of an offset mower, mounted on a loader in place of the bucket, or on a 3-point hitch on either the front or rear of the tractor. We offer 4 different types of sweeping heads. The orchard head has the poly sweeping fingers on a slight angle. The fingers of the vineyard head are held in a vertical position, which keeps the long canes from wrapping up. The other two styles are gutter brooms, available with nylon or metal tines, have a slight angle, and offer a continuous brushing action. Brush Spiders are currently working in many fields from apple orchards, blueberries, vineyards, blackberries, and many more.

- * Attaches quickly and easily to Edwards Front Mount 3-Point Hitch for good visibility and maneuverability.
- * Sweeps pruning's and debris out of the rows.
- * Double sided units are available for two row operation.
- * Attaches to most offset mowers, shredders and tillers.
- * Cleans ground in row for efficient chemical application.
- * Polyurethane fingers provide long life with gentle action.
- * Variable speed hydraulic controls match the speed of rotation to the conditions.
- * Optional hydraulic width adjustment
- * Saves tractor and man hours

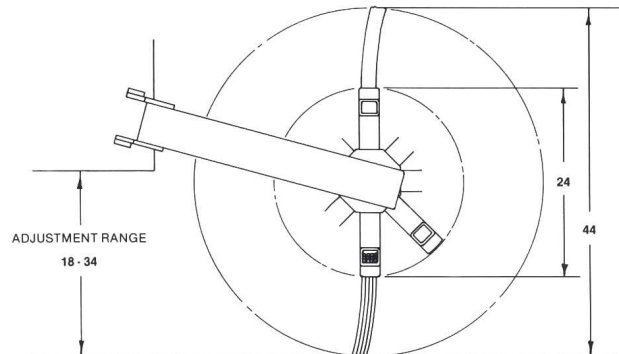
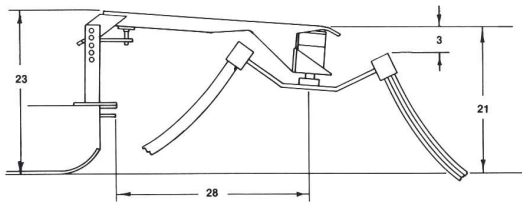


4312 Main Street Union Gap WA 98903
 509-248-1770 800-452-5151
 Fax: 509-248-9721
 Web Site: www.edwards-equip.com
 E-mail: sales@edwards-equip.com

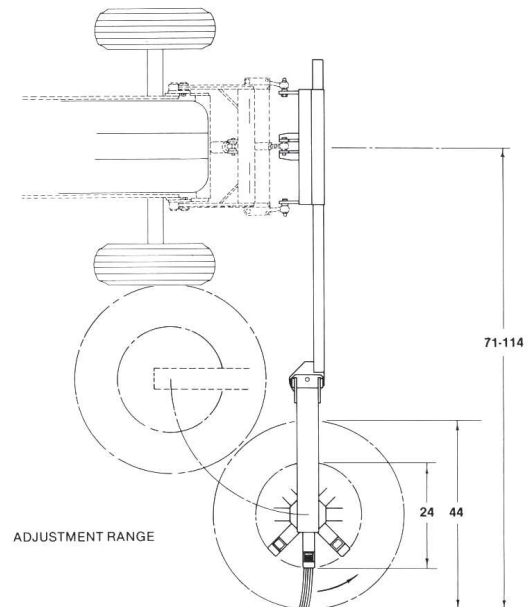
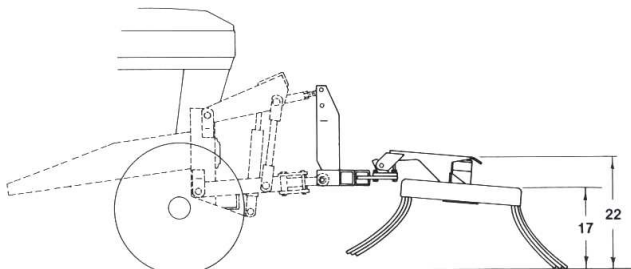
BRUSH SPIDER Series BS8300

230.1017

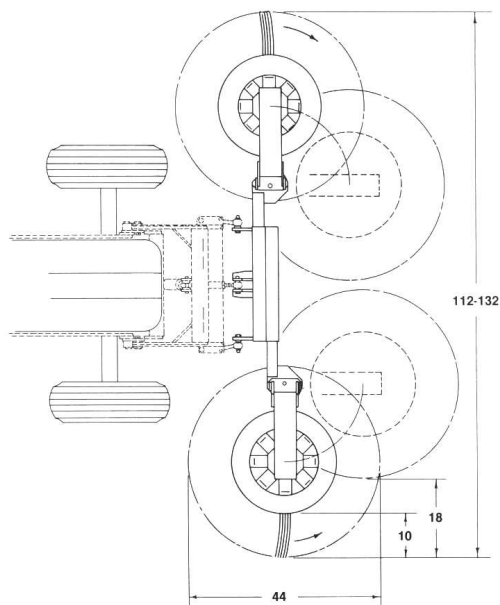
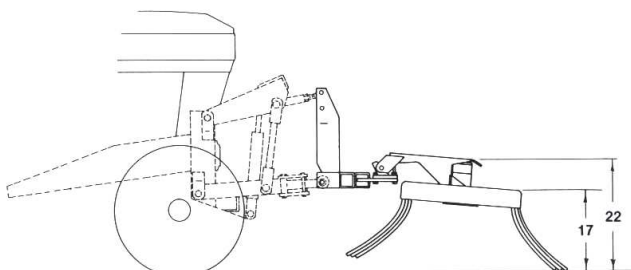
The Edwards Mower mounted Brush Spider can be mounted to the corner of most offset mowers and shredders. Built with durable polyurethane sweeping fingers to provide long life with action that is gentle on trees and irrigation risers.



The Edwards 3-point mounted Brush Spider with an orchard style head. This can be mounted to the 3-point hitch of most tractors. The ideal companion for the Edwards Front Mount 3-Point Hitch. With the Brush Spider on the front it is possible to sweep the debris from the row and into the path of the shredder or mower. Cleaning the tree row and the center strip at the same time, saving man and tractor hours. Clean row ahead of sprayer for more efficient herbicide application.



The Edwards series BS8320 Double Brush Spider now enables you to clean around vines and posts in vineyards without extra tractor trips or hand raking. The Brush Spider sweeps prunings and other debris from rows and into the path of the mower or shredder for efficient one pass operation. Variable speed hydraulic controls match speed of rotation to varying conditions. Optional hydraulic width adjustment available.



FRONT MOUNT **3-POINT HITCH** **Series DH8300**

Imagine a product that will cut some operations in half! Half the man power and tractor hours. Imagine no further check out the Edwards Front Mounted 3-Point Hitch



The new Edwards front mount 3-point hitch enables you to mount many of your 3-point implements on the front of your tractor.

Front mounting offers several advantages including the use of front and rear implements at the same time. That reduces the number of passes over the same ground plus it saves fuel and reduces man and tractor hours.

The front mount 3-point hitch mounts easily and quickly to the tractor and works with many 3-point implements.

Suggested uses:

- Front mount transporter forks for carrying up to 1500 pounds on a pallet or in a bin.
- Combine with an "A" frame tool bar for front cultivator combinations.
- Front mount Dyna-Trim mower for mowing around trees and posts.
- Front mount Brush Spider for cleaning out leaves and brush from between plants and trees.
- Front mount spray booms for spraying the tree rows.



4312 Main Street Union Gap WA 98903

509-248-1770 800-452-5151

Fax: 509-248-9721

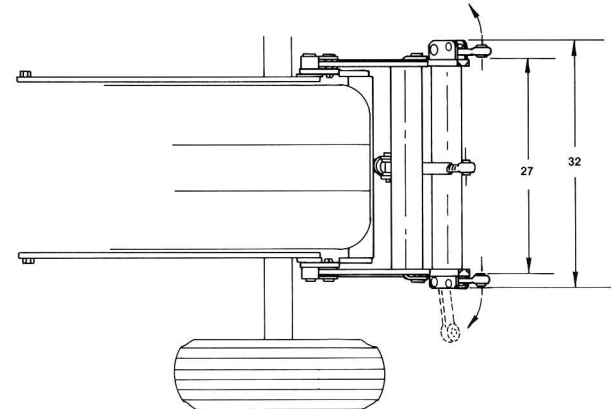
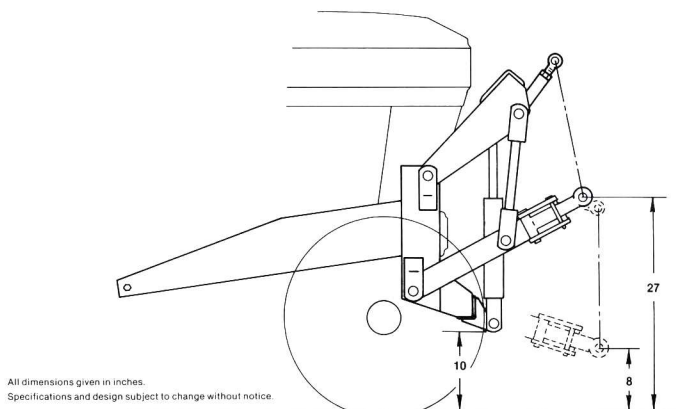
Web Site: www.edwards-equip.com

E-mail: sales@edwards-equip.com

EDWARDS 3-POINT HITCH

606.1010

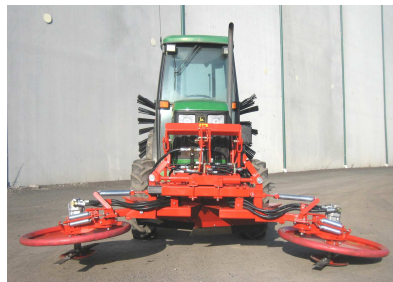
Series DH8300 SPECIFICATIONS



Some of the implements that we have put on the Edwards Front Mount 3-Point Hitch.



TRANS-PORTER FORK



DOUBLE DYNA-TRIM MOWERS



SINGLE DYNA-TRIM MOWER



DOUBLE BRUSH SPIDER VINEYARD



FRONT MOUNT 3-POINT HITCH



SINGLE ORCHARD BRUSH SPIDER



6 FOOT BLADE ATTACHMENT



BRUSH RAKE



SPRAY BOOMS

Other time saving attachment used with the Edwards Front Mount 3-Point Hitch
Cultivator, Hydraulic Aerator, Vine Pruner, Mowers, Buckets, Rock Rakes, Hay Spears,
and many more.

Thomas Bros. Equipment Sales Inc
41764 Red Arrow Hwy, Paw Paw, MI 49079
269-657-3735 Fax 269-657-2110
Toll Free: 866-214-6135
email: tbrofab@gmail.com
www.thomasbrosequipmentsales.com



TRANS-FORK

Series TF6800 2500 lb. Capacity

The Trans-Fork can be installed on the front or rear of the tractor and is made of high quality materials. Sealed ball bearings support the fork carriage. The slide channels are a special section rolled from high carbon steel. Hard chromed rod is used in all cylinders. The Trans-Fork is designed for many years of dependable service.

Max lifting capacity is 2500 pounds at 24 inches. Available in 60, 72, 84, 96, 108, 120 and 144 inch lifting heights.



- Optional attachments:
- Side shift
- Hold down clamps
- Back guard
- Special carriage width upon request
- Reverse Steering
- Overhead guards



EDWARDS
EQUIPMENT COMPANY

4312 Main Street Union Gap WA 98903

509-248-1770 800-452-5151

Fax: 509-248-9721

Web Site: www.edwards-equip.com

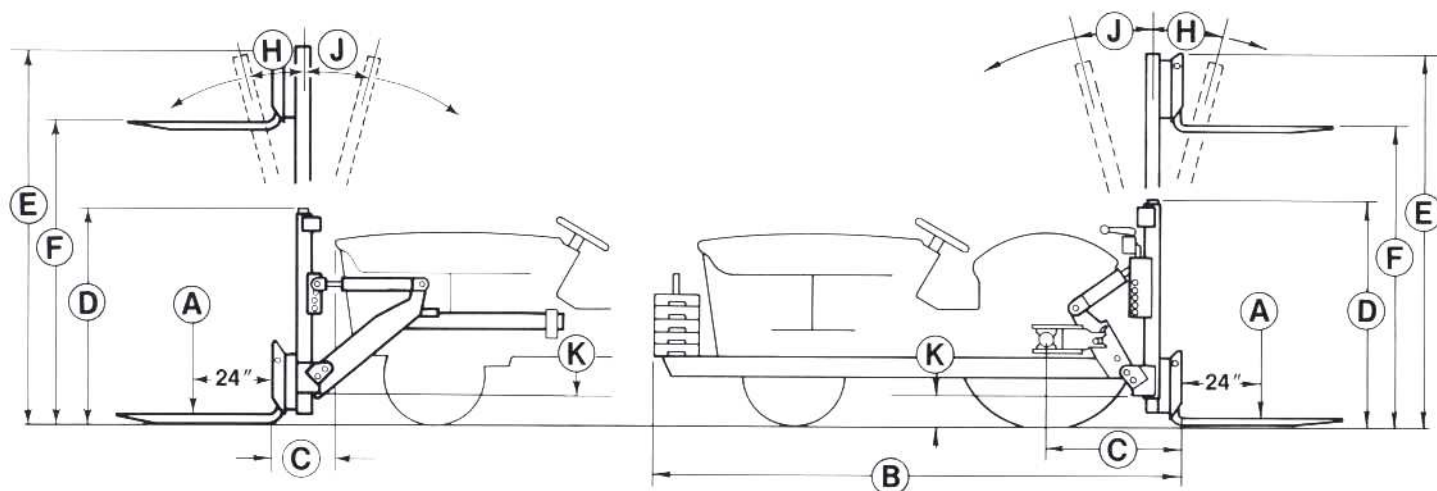
E-mail: sales@edwards-equip.com

EDWARDS

TRANS-FORK

Series TF6800

SPECIFICATIONS



FORKS: Forks are made from 1 1/4 x 4 heat treated alloy steel. Standard length is 46". Standard carriage width is 29 inches. Fork spacing is adjustable. Other fork lengths and carriage widths are available on special order.

MAST TYPE: Single stage lift.

COUNTERWEIGHT: About 1100 pounds should be added to the front of most tractors to effectively counterbalance a 2500 pound load.

SIDESHIFT (Optional): Three inches each side of mast center. Weight — 153 pounds.

HOLDDOWN: Available as an optional attachment.

MODEL NUMBER	TF6860	TF6872	TF6884	TF6896	TF68108	TF68120	TF68144
A — Lifting Capacity — Pounds at 24 Inches	2500						
B — Overall Length with Sideshift	Tractor Length Plus 18 Inches Tractor Length Plus 21 Inches						
C — Rear Mount Reach with Sideshift Front Mount Reach with Sideshift	29" to 37" 32" to 40" 18" 21"						
D — Overall Height Mast Lowered	52"	58"	64"	70"	76"	82"	94"
E — Overall Height Mast Raised	82"	94"	106"	118"	130"	142"	166"
F — Maximum Lifting Height	60"	72"	84"	96"	108"	120"	144"
H — Degrees Tilt Forward	6° to 10°						
J — Degrees Tilt Rearward	10° to 15°						
K — Ground Clearance	6 1/2" to 15"						
Approximate Shipping Weight — Pounds	1132	1159	1186	1213	1240	1267	1321

* Depending on tractor tire size.

HYDRAULIC SYSTEM REQUIREMENTS: Can be operated from most tractor hydraulic systems.

Specifications and design subject to change without notice.

Thomas Bros. Equipment Sales Inc
41764 Red Arrow Hwy, Paw Paw, MI 49079
269-657-3735 Fax 269-657-2110
Toll Free: 866-214-6135
email: tbrofab@gmail.com
www.thomasbrosequipmentsales.com


TT4800 TT4900

UNIVERSAL LIFTS

THREE POINT FORK LIFTS

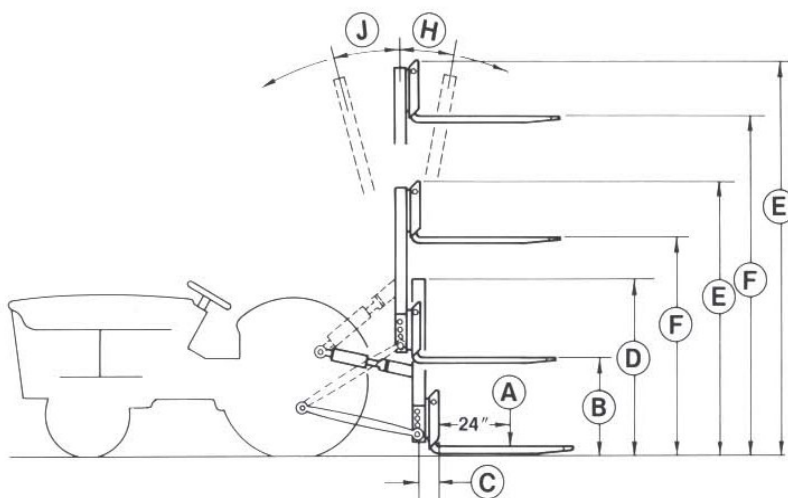
The Edwards Universal Lifts are designed for easy-on, easy-off convenience. The Universal Lift can be used for lifting, moving and loading palletized material, bins and other bulky or heavy objects. The time-saving features of the Universal Lift make the investment well worthwhile in itself. The new Edwards Universal Lifts mount quickly and easily on any category 1 or 2 three point hitch tractor. Think of the many labor saving ways you can use a 3 point mounted Edwards Universal Lift.

- Sealed ball bearing support carriage
- Adjustable hitch pin positions fit large and small tractors
- Retractable stand holds unit in vertical position for convenient storage and installation
- Hydraulic cylinder top link permits tilting forks forward and backward
- Adjustable top link position to fit variety of tractor hitches.
- Anti friction bearing idler carries heavy chain to support load
- Special rolled channel mast of high carbon steel
- Prop supports top link cylinder for convenient hookup. Orifices in cylinders assure smooth, safe operation
- Removable fork anchors hold forks down for easy pull out from loads
- Optional attachments available
- Specification and design subject to change without notice



Thomas Bros. Equipment Sales Inc
41764 Red Arrow Hwy, Paw Paw,
MI 49079 269-657-3735 Fax
269-657-2110
Toll Free: 866-214-6135
email: tbrofab@gmail.com
thomasbrosequipmentsales.com

Model Number	TT4800	TT4900
A. Lift Capacity-Pounds at 24 inches	2000	2000
B. Three-Point Lift Height*	24"	24"
C. Reach Reach with Side Shift	5" 8"	5" 8"
D. Overall Height Mast Lowered	64"	61"
E. Overall Height Mast Raised	88"	121"
F. Maximum Lifting Height	64"	96"
H. Degrees Tilt Forward	6 to 10 degrees	6 to 10 degrees
J. Degrees Tilt Rearward	9 to 13 degrees	9 to 13 degrees
K. Mast Lifting Height (F-B)	40"	72"
Approximate Shipping Weight	562 pounds	715 pounds
Three Point Hitch Category	1 or 2	1 or 2
Mast Type	Non-Telescoping	Telescoping
Forks, Heat Treated Alloy Steel	1-1/4 x 4 x 46	1-1/4 x 4 x 46
Fork Carriage Width	29"	29"


4312 Main Street Union Gap WA 98903
509-248-1770 800-452-5151
Fax: 509-248-9721
Web Site: www.edwards-equip.com
E-mail: sales@edwards-equip.com
Agricultural
MANUFACTURERS
Industrial