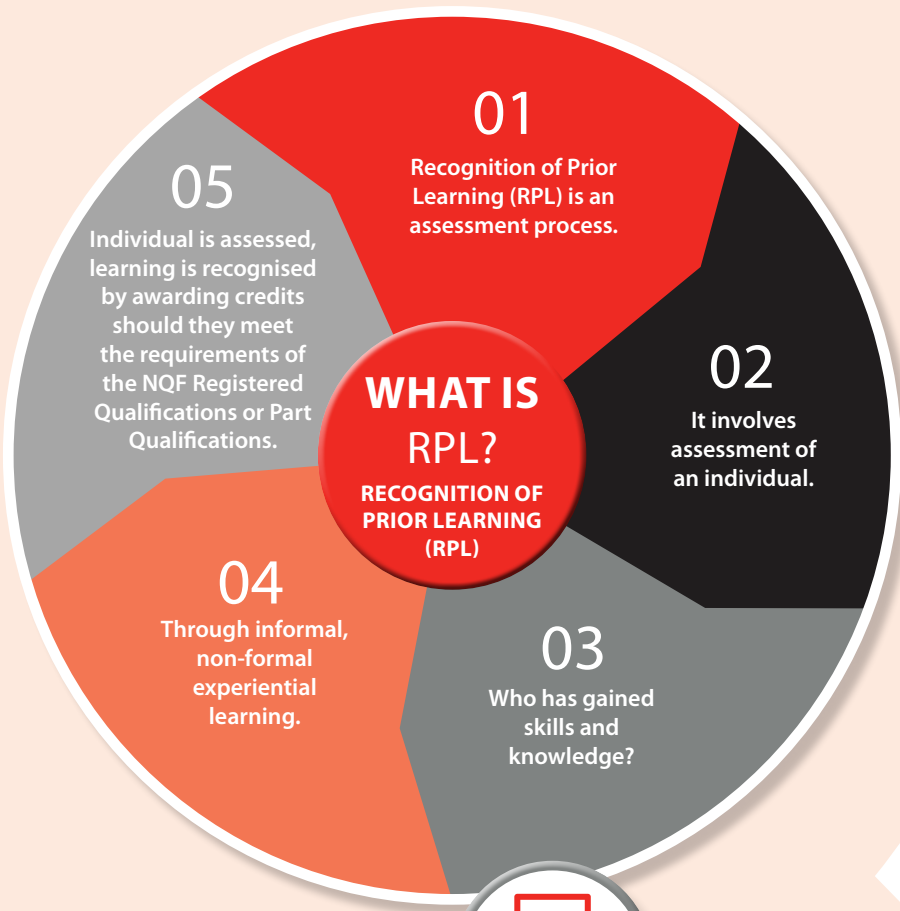


**RECOGNITION
OF PRIOR
LEARNING (RPL)**

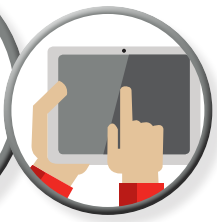


WHY RPL?



It is a formal Recognition for knowledge/skills gained on the Job and as a result it offers informal/unstructured learning experiences.

It is redressing past injustices and recognising competence through practical work experiences.



WHERE IS IT APPLICABLE?



Occupational
Qualifications



Part
Qualifications



Trades

WHO CAN IMPLEMENT RPL?



Assessment
Quality Partners
(AQPs)



RPL
Practitioners



Skills
Development
Providers
accredited by
the QCTO



Assessment
Centres
accredited by
the QCTO



Trade Test
Centres
accredited
by the QCTO



SETAs

THE ROLE OF QCTO IN RELATION TO RPL

Monitor and evaluate
implementation
of RPL



Ensure
consistency in the
implementation of
RPL policy



Foster
professional
bodies to
facilitate RPL



Monitor and
record RPL
admission rates

RPL for access

Alternative route into a programme of learning/qualification for those who do not meet formal minimum requirements for admission to enrol for a registered qualification.



RPL for credits

To provide credits towards a registered qualification.



RPL for access to the EISA

A Statement of Results (SoR) can be issued to successful RPL candidates to sit for the final External Integrated Summative Assessment for Occupational Certificates.



THREE FORMS OF RPL

COMPLAINTS

Contact the Quality Council for Trades & Occupations (QCTO)

256 Glyn Street, Hatfield, Pretoria, 0083
Private Bag X278, Pretoria, 0001
+27 12 003 1800
info@qcto.org.za
www.qcto.org.za

QCTO Fraud and Ethics Hotline
0800 322 322
Email: qcto@tip-offs.com