

What is
SCIRE?

SCIRE

SPINAL CORD INJURY RESEARCH EVIDENCE

PROJECT

The SCIRE Project is an international collaboration of scientists and health professionals that provides systematic reviews of spinal cord injury research for health professionals and researchers

SCIRE

SPINAL CORD INJURY RESEARCH EVIDENCE

Professional

Informing SCI professionals to guide their practice based on current best evidence

scireproject.com

SCIRE

SPINAL CORD INJURY RESEARCH EVIDENCE

Community

Providing easy to read evidence-based spinal cord injury research for everyone

scireproject.com/community



SCIRE

SPINAL CORD INJURY RESEARCH EVIDENCE

Community

Ensuring everyone has access to information based on the latest science to help them understand spinal cord injury, manage health conditions, and live a healthy and fulfilling life

scireproject.com/community

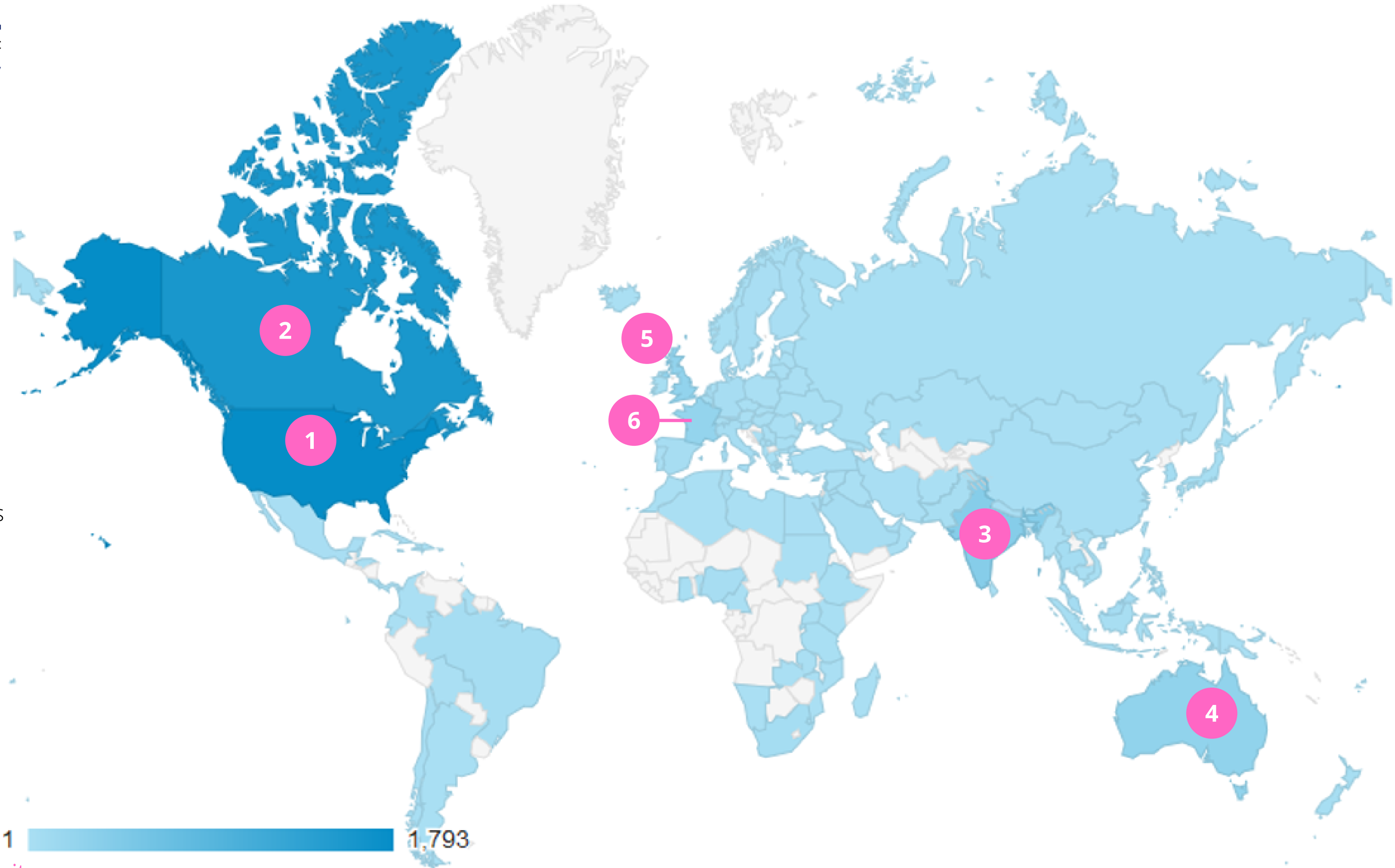
FOLLOW US ON SOCIAL MEDIA



@SCIRECommunity
SCIREWebVideo

While SCIRE Community has the most visitors from the USA and Canada, it also has an international reach, with India, Australia and the UK rounding out the top 5. The creation of French content has notably increased visitors from France and Belgium.

SCIRE Community also has a presence throughout South America, Africa, and Asia.



Spinal Cord Anatomy
Spinal cord Injury Basics

Autonomic Dysreflexia
Orthostatic Hypotension
Abdominal Binders
Body Weight Supported Treadmill Training
Exercise Guidelines for Adults With SCI
Functional Electrical Stimulation (FES)
Supported Standing

Bladder Changes after SCI
Acupuncture
Botulinum Toxin
Urinary Catheters
Urinary Tract Infections

Spasticity
Autonomic Dysreflexia
Baclofen
Botulinum Toxin
Cannabis (Marijuana) and Cannabinoids
Functional Electrical Stimulation (FES)
Transcutaneous Electrical Nerve Stimulation (TENS)

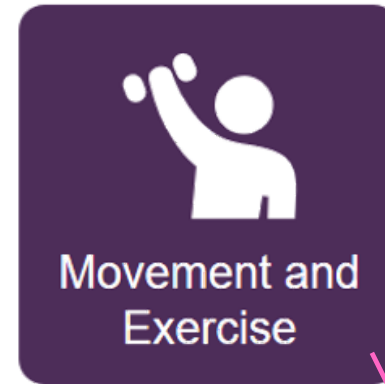
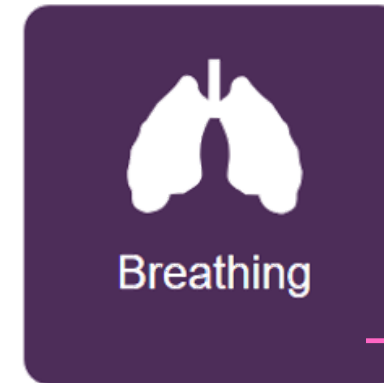
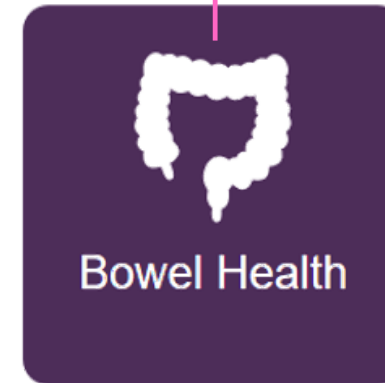
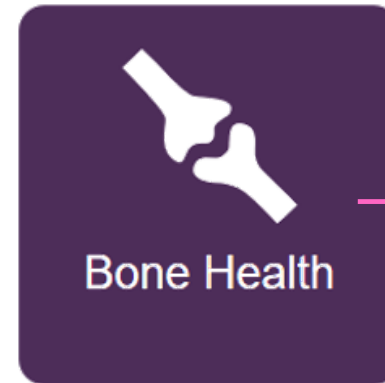
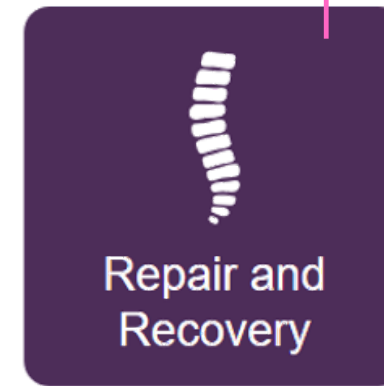
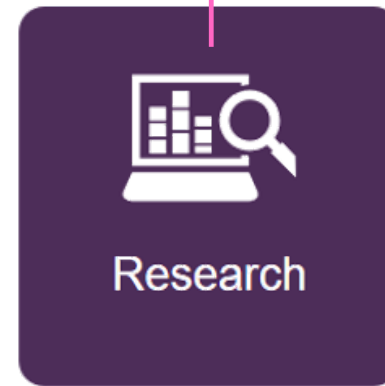
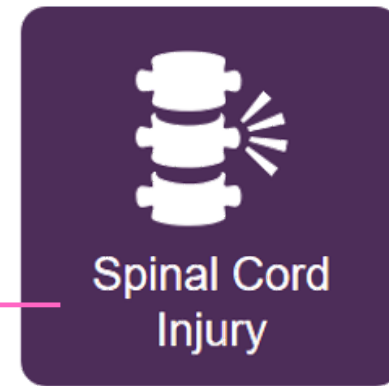
Emergency and Hospital Care
Understanding Rehabilitation

Understanding Research Evidence

Osteoporosis after SCI

Functional Electrical Stimulation (FES)

Neuroprotection



Pressure Injuries
Pressure Mapping

Depression After SCI

Pain after SCI
Acupuncture
Cannabis (Marijuana) and Cannabinoids
Transcutaneous Electrical Nerve Stimulation (TENS)

Body Weight Supported Treadmill Training
Exercise Guidelines for Adults With SCI
Functional Electrical Stimulation (FES)
Supported Standing

Bowel Changes After SCI

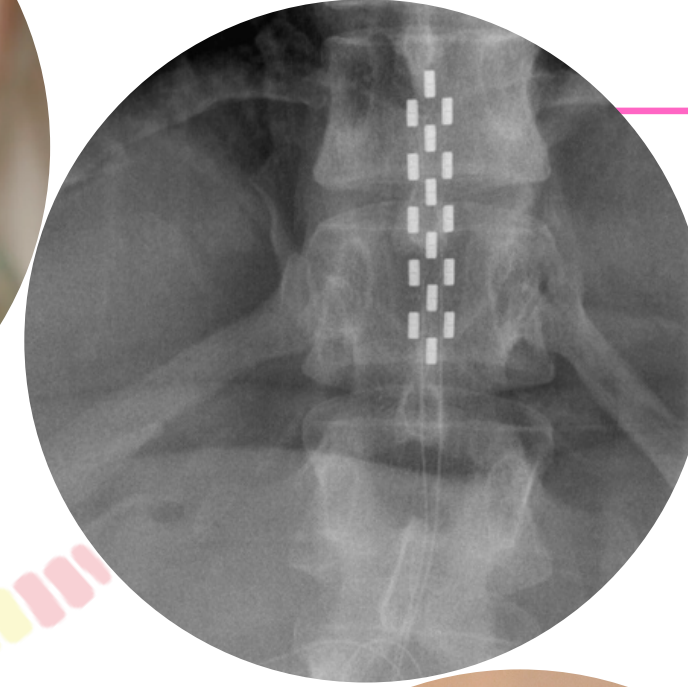
Inspiratory Muscle Training
Abdominal Binders

Sexual health after SCI

20+ videos are available to view directly on SCIRE Community's website with even more on the SCIRE Youtube Channel:
[SCIREWebVideo](https://www.scireproject.com/community)

Sexual Health

Sex after Spinal Cord Injury: An Introduction
Sex after Spinal Cord Injury: Sexual Self-Esteem



Neuromodulation

Introduction to Neuromodulation
Epidural Stimulation
Functional Electrical Stimulation
Intrathecal Baclofen

Skin Health

Pressure Wound
Video Series

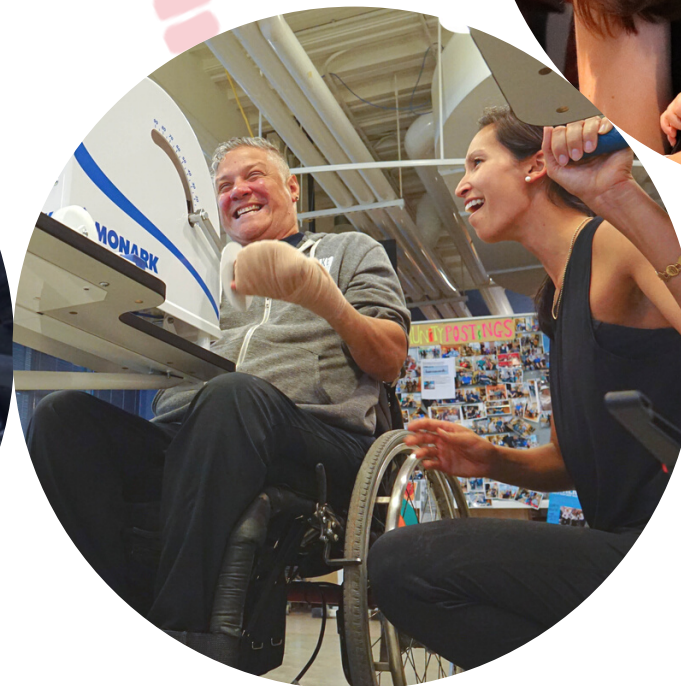


Spasticity

3 Common Triggers
Downfalls of Treating Non-problematic Spasticity
Physiological Basis of Spasticity
Problematic vs. Non-problematic Spasticity
Spasticity as a Red Flag

Wheeled Mobility

5 Situations that Most Commonly Cause Falls
Moving the Wheelchair Unexpectedly
Safe Transfers



Breastfeeding

Assistive Aids & Technology
Personal Stories
Health Considerations

Physical Activity

Introduction to Neuromodulation
Epidural Stimulation
Functional Electrical Stimulation (FES)
Intrathecal Baclofen

We are grateful for the contributions of our partners for supporting SCIRE Community.

This project has been made possible through the support of the following organizations:

Financial Support From:



Other Support From:

