

Building a Fully Wireless, Intelligent Cloud Campus Network

Huawei CloudCampus 3.0 Solution



Cities, Excluding Roads, Are Composed Entirely of Campuses



90%+

of urban citizens work
and live in campuses



80%+

of GDP is created in campuses



90%+

of innovation happens
in campuses

5h & 22h

on average spent using intelligent
terminals and residing in campuses,
respectively, every day



However, Enterprise Campus Networks Face New Challenges in the Cloud Era...

Digital transformation trends

100x

wireless terminal connections

1 network

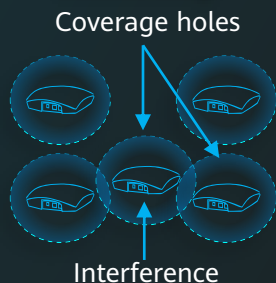
with global service interworking

80%

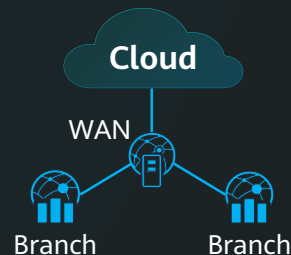
of applications deployed on clouds

Campus network evolution challenges

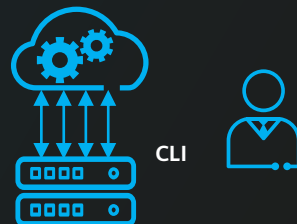
Discontinuous Wi-Fi networking



Cross-domain fragile architecture



Cloud outpacing network



Trouble ticket-driven operation



Post-Pandemic Enterprises Embrace Digitalization of Work and Production, Posing New Expectations for Campus Networks

Working from home is the new normal

Twitter employees don't ever have to go back to the office (unless they want to)

Google says that the majority of its employees will work from home until 2021

Some essential staffers will be allowed back in June or July

By Chaim Gartenberg | @gartenberg | May 8, 2020, 2:10pm EDT

Microsoft updates WFH policy, lets employees work remotely through October

Morning Coffee: JPMorgan bankers will be working from home forever.

Social distancing requires contactless workspaces

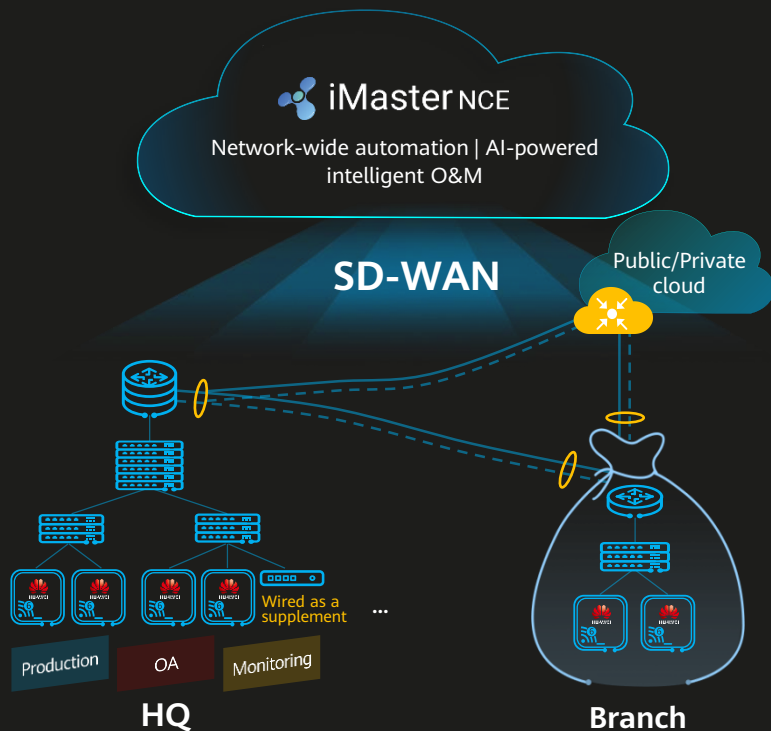


Audio and video have become new production tools



New characteristics of future campus networks:
Super Capacity | Intelligent Experience | Autonomous Driving

Huawei CloudCampus 3.0 Solution: Building a Fully Wireless, Intelligent Cloud Campus Network



Intelligent O&M

- Visualized user experience with CampusInsight
- Unique intelligent O&M of LANs and WANs, fault locating in minutes

90%
fewer complaints

Cloud management

- One controller across WANs, LANs, and WLANs
- End-to-end SDN automation

50%
OPEX savings

One global network

- SD-WAN intelligent traffic steering
- Unique SRv6 enables one hop to cloud

40%
lower interconnection costs

Fully wireless networking

- Continuous networking at scale, coverage with no blind spots, and interruption-free services
- PCC hybrid cables deliver ultra-large bandwidth

40%
higher productivity

Wi-Fi 6 Wireless Network Replaces Wired Network Perfectly, Enabling More Innovative Applications



4K conference

70 Mbps bandwidth, latency < 100 ms



Immersive education

AR/VR, latency < 10 ms



Factory automation

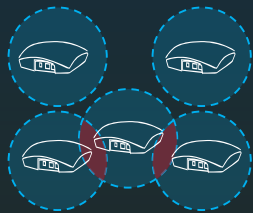
AGV roaming: zero packet loss, latency < 10 ms

Extending from workplaces to production, and enabling more innovative applications

Scenario	Application	Bandwidth	Latency	Terminals	Wired	Wi-Fi 5	Industry Wi-Fi 6	Huawei Wi-Fi 6
Office application	4K conference	70 Mbps	100 ms	10-30	✓	✓	✓	✓
	AR/VR	100 Mbps	10-20 ms	30-50	✗	✗	✓	✓
Production application	AGV	512 kbps	10 ms	500-1000	✗	✗	✓	✓
	Production automation	10 Mbps	4-10 ms	20-50	✓	✗	✗	✓

Huawei Wi-Fi 6 Enables Continuous WLAN Coverage and Independent Networking

Discontinuous coverage of traditional Wi-Fi



Challenges to traditional continuous WLAN networking

- Coverage holes
- Vulnerable to co-channel interference
- Prone to in-roaming interruptions

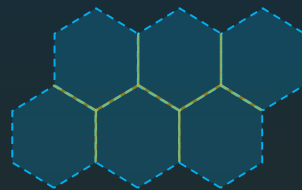
No blind spots



Exclusive 3D network planning

- **30-minute** planning for a campus with 10K users
- **3D** signal simulation and roaming, intuitively demonstrating the effects of planning

No coverage holes



Industry's unique 4-element smart antennas

- **Always-on signals** for users
- **20%** longer coverage range

Interruption-free roaming



Exclusive AI-powered roaming technology

- **Proactive** roaming
- **96%** roaming success rate

First Mover, Early Adopter

Huawei's Campus Practices



170+

countries and regions



194,000

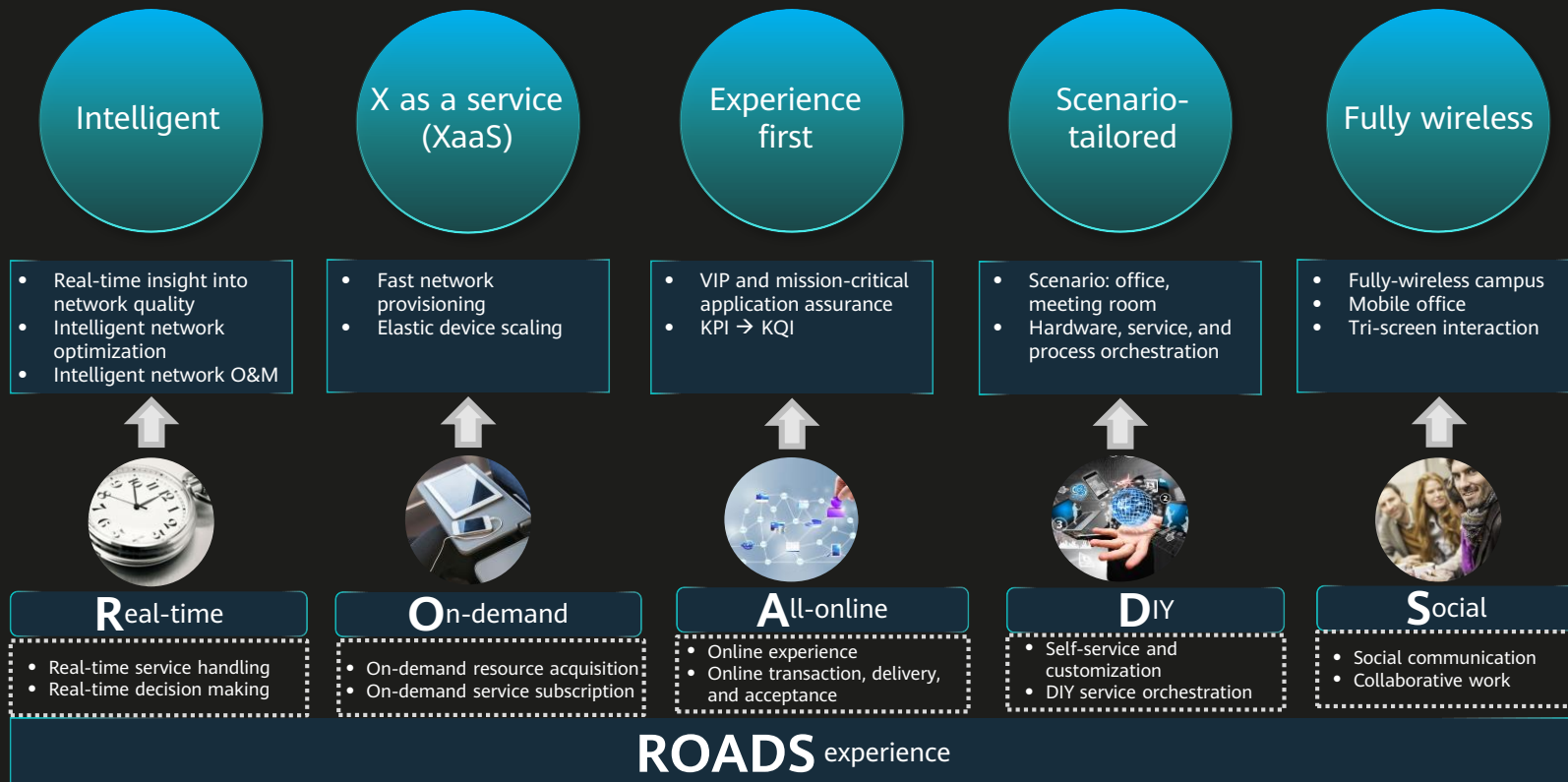
employees



> 2

terminals per employee

Huawei's Concepts for Building a High-Quality Fully-Wireless Campus



Fully-Wireless Campus: Bridging the "Last Meter" in Fully-Wireless Meeting Rooms

WeLink-Board

Send meeting minutes with one click using the e-whiteboard.

Wireless projection

Join telepresence meetings by scanning QR code.

"Last-meter" connectivity for more efficient team collaboration and higher efficiency



Send meeting minutes to a mailbox with one click using the e-whiteboard.



Wireless projection



Join meetings by scanning QR code.

Experience First: Shifting Focus from KPIs to KQIs and Constructing WLANs Based on User Experience

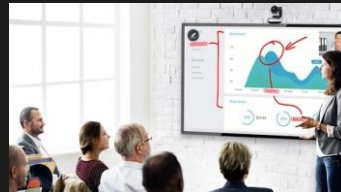
High-quality new apps



Videoconferencing



Live streaming



Wireless projection



Wireless VDI

KQI

	Videoconferencing/Live Streaming
Initial buffering latency	< 2.8s
Frame freezing times	≤ 1
Frame freezing duration	< 2%

	Wireless Projection
Initial buffering latency	N/A
Frame freezing times	≤ 1
Frame freezing duration	< 2%

	Wireless VDI
Initial buffering latency	N/A
Frame freezing times	≤ 1
Frame freezing duration	< 2%

KQI (based on users' real impressions of applications): user experience-centric

KPI (based on device parameters, bandwidth, latency, jitter, etc.): centered on large bandwidth

KPI

	720p	1080p	4K
Bandwidth (Mbps)	8	16	32
Latency (ms)	60	50	40

	Wireless Projection
Bandwidth (Mbps)	32
Latency (ms)	55

	Wireless VDI
Bandwidth (Mbps)	25
Latency (ms)	20

XaaS: Cloud-based Network Architecture Decouples Services from the Network, Implementing Network as a Service (NaaS)

Network deployment for numerous sites



- Rep office
- R&D center
- OpenLab
- Retail store

One network for multiple purposes



- Office, R&D, and production networks
- Red, yellow, and green zones

Instant provisioning of network services



- Guest Wi-Fi
- Proxy permission
- BYOD
- VIP network service

Management and O&M of numerous sites



- Remote site device replacement
- Traffic visibility
- Remote fault locating and rectification

Innovative services



- Asset management
- Terminal compliance check
- Traffic statistics
- Space management

Decoupling of services from the network



Fully Wireless Networking: All-New AirEngine Wi-Fi 6, Ideal for Continuous Networking in All Scenarios



2x signal strength
@ hotel guest rooms



20% greater coverage distance
@ intelligent stores



Interruption-free roaming
@ mobile offices



50% higher concurrency
@ electronic classroom



AirEngine 5761-11W/12W

Dual radios (2+2),
up to 1.775 Gbps



AirEngine 5761-11

Dual radios (2+2),
up to 1.775 Gbps



AirEngine 5761-21

Dual radios (2+4),
up to 5.38 Gbps



AirEngine 6761-21T

Triple radios (2+2+4),
up to 6.38 Gbps

Hybrid Cable: Optimal Choice for WLAN Data Backhaul in the Wi-Fi 6 Era

CloudEngine hybrid optical-electrical switch

AirEngine Wi-Fi 6 AP



- 15 patents, industry's first hybrid optical-electrical access
- Power supply at an ultra-long distance of 300 m
- Superfast 10GE access via optical fibers

Hybrid cable

10GE

25GE



- Superconductor red copper material, industry-leading 100 W PoE power supply
- Thin wall insulation, industry's thinnest 6 mm hybrid cable
- ±6 kV outdoor surge protection

Hybrid cable

Cat6A

3x
PoE distance

300 m



100 m

Nx
transmission speed

N x 10 Gbps



10 Gbps

5x
cable service life

30 years



5-7 years

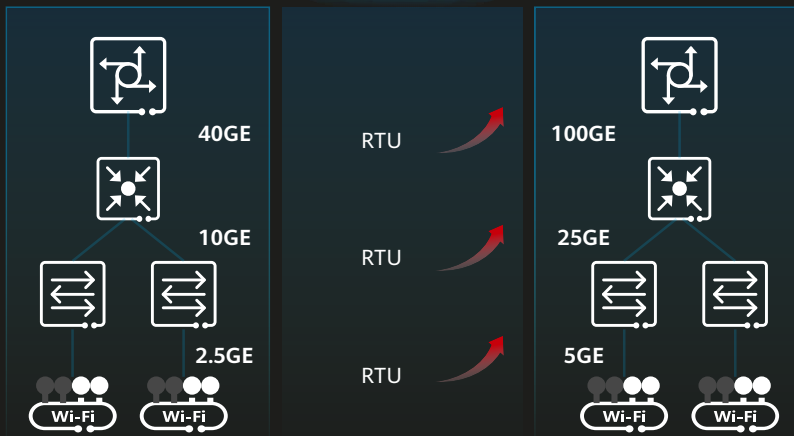
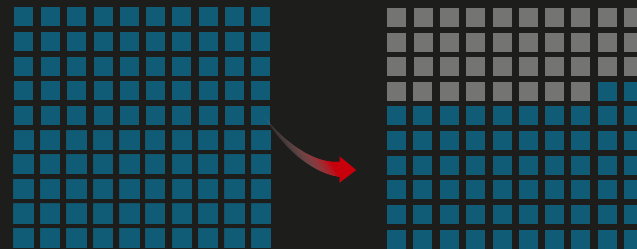
30%
Lower deployment costs

0.7 A



A

Innovative RTU: Pay-as-You-Grow, Building a Scalable Campus Network



CAPEX down 38%

03

Flexible network bandwidth upgrade via RTU licenses to meet future needs

02

On-demand purchase of 24-port or 48-port models (with all-2.5GE, all-5GE, or all-10GE rates)

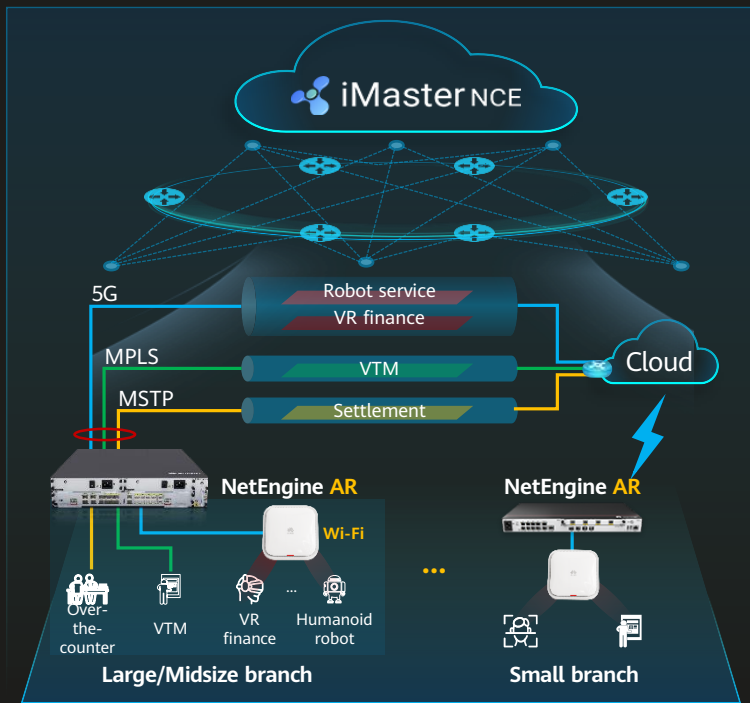
01

Improved ROI: pay-as-you-grow

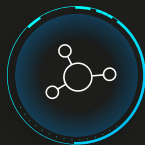
RTU is short for right to use. Customers can flexibly choose RTU licenses to improve the spatial streams of APs as well as the port speed and switching capability of switches.



One Global Network: Huawei SD-WAN Enables One-Network Reachability for Global Services



Flexible networking for on-demand interconnection



- 5G offers gigabit wireless, enabling fast deployment
- AR1000V enables one hop to five public clouds, achieving multicloud interconnection

Intelligent traffic steering for optimal experience



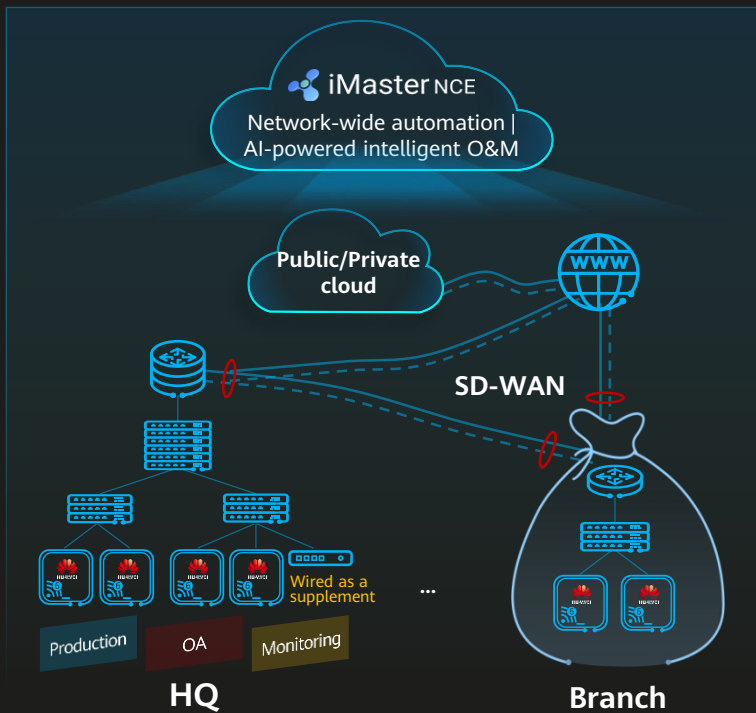
- Unique "SD-WAN + SRv6" guarantees SLAs
- Multi-fed and selective receiving technology, coupled with a high-performance redundancy algorithm, promises 0-ms switchover for key services

Unified management and control for Intelligent O&M



- Intelligent policy recommendation, policy provisioning with just three steps, and proactive prediction of final effects
- 50+ reports, visibility of network-wide status, and fast fault locating

Cloud Management: SDN for Global Interconnection and Cloud-Network Synergy



Model-driven approach, SDN-powered easy integration



- Virtual Private Cloud (VPC)-like models and dynamic preconfiguration
- Automatic configuration of virtual networks and fast service deployment

Intelligent verification, error-free SDN-based configuration



- Unique network-wide topology simulation in minutes
- Unique multi-tiered simulation algorithm, ensuring zero errors

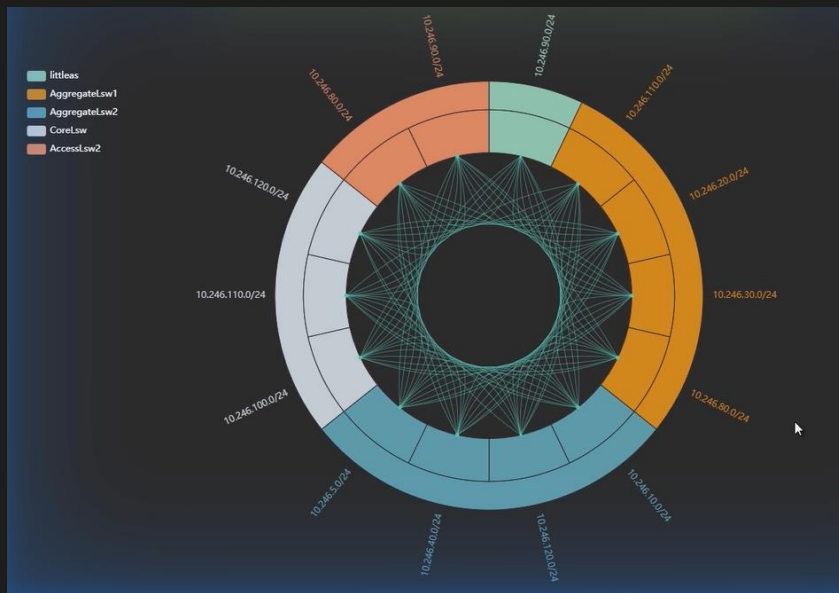
One-click deployment, SDN-based E2E configuration



- One-click deployment of service configurations
- Full-lifecycle management

Intelligent Verification: Zero-Error SDN-Based Configuration, Worry-free Deployment

Unique data plane verification (DPV)



Network-wide snapshot comparison

Network-wide information backup and rapid discovery of inconsistencies, facilitating fault locating

Subnet verification

Real-time intelligent verification of network connectivity and multipath tracing, quickly identifying faulty NEs

Terminal access simulation

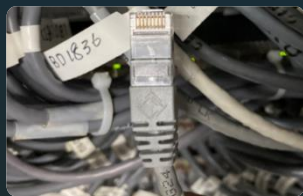
Real-time simulation and verification of terminal access permissions, building secure and trustworthy networks

AI-powered Intelligent O&M: Proactive Fault Prediction and Intelligent Network Optimization, Reducing Complaints by 90%

As-Is



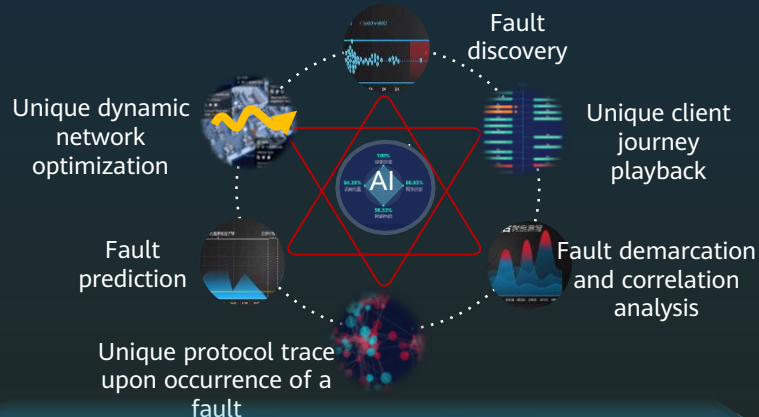
- Exponential growth of wireless users
- Complex and time-varying wireless scenarios



- Fast increase in wired ports
- Complex network configuration



To-Be



Passive response

4 hours

Fault rectification

162 Mbps

Average bandwidth

Post-event troubleshooting

> 4 hours

Post-event troubleshooting

1650+

Network faults

Proactive fault prediction

10 minutes

Fault rectification

58%

Increase in network-wide performance

Pre-event health check

10 minutes

Pre-event prevention

85%

Reduction of potential faults

Award-Winning Products and Solutions, Proven Leadership

Frost & Sullivan

2020 Global Campus Switch
Enabling Technology
Leadership Award

CloudEngine S12700E series switches



No.1



Highest score
A high-end campus core switch
for the Wi-Fi 6 era

Interop Tokyo 2020

Best of Show Award Special
Prize

NetEngine 5G AR series
enterprise routers



A full lineup of 5G enterprise
routers capable of 5G SD-WAN

Gartner

Peer Insights "Customers'
Choice"

Wired and wireless LAN access
infrastructure



No.1

Only Chinese vendor to
receive this honor
Highest rating by customers

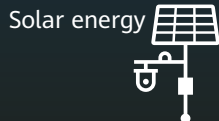
CloudCampus 3.0 + X: Enabling Digital Transformation Across Industries

X1: smart city

Unique: power supply via solar energy



Intelligent video backhaul
SmartX switch



Video backhaul

X2: smart energy

5G interconnection,
2x efficiency



EC-IoT gateway
AR502H-5G



Electric power

X3: industrial Internet

40% higher efficiency



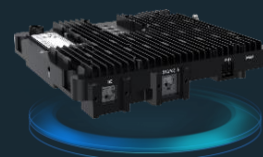
Unique industrial-grade
Wi-Fi 6 CPE



Wireless factory

X4: smart transportation

380 Mbps data transmission
for trains @ **160 km/h**



Vehicle-mounted Wi-Fi 6 AP
AirEngine 6760-51E



Rail transportation

**CloudCampus 3.0, ideal for building
a fully wireless, intelligent cloud campus network**

CloudCampus 3.0

Building a Fully Wireless, Intelligent Cloud Campus Network

Fully Wireless Networking



Breaking boundaries,
inspiring innovation

One Global Network



One hop to cloud, always-
on services anywhere

Cloud management



Agile provisioning of
services, faster TTM

Intelligent O&M



O&M with intelligent
experience, reliable services

Thank you.

把数字世界带入每个人、每个家庭、
每个组织，构建万物互联的智能世界。

Bring digital to every person, home and
organization for a fully connected,
intelligent world.

Copyright©2020 Huawei Technologies Co., Ltd.
All Rights Reserved.

The information in this document may contain predictive statements including, without limitation, statements regarding the future financial and operating results, future product portfolio, new technology, etc. There are a number of factors that could cause actual results and developments to differ materially from those expressed or implied in the predictive statements. Therefore, such information is provided for reference purpose only and constitutes neither an offer nor an acceptance. Huawei may change the information at any time without notice.

Huawei Confidential

