



Welcome to Reading, United Kingdom

On behalf of the local organizing committee, Dr Arpita Bose, Dr Fatemeh Mollaei, Dr Samrah Ahmed, Dr Doug Saddy, and our student supporters Qing Zhao, Aqsa Hussain, we extend our warmest wishes for a pleasant and inspiring visit. We hope that you enjoy your time in Reading and gather valuable information and inspiration from the conference.

This dedicated guide is designed and organised by our student supporters Qing Zhao, Aqsa Hussain and supervised by Dr Arpita Bose, to assist conference attendees like yourself in navigating and exploring Reading with ease and confidence. Our primary objective is to enhance your overall experience and ensure that you maximize your time here.

Within the pages of this guide, you will discover a wealth of valuable information, meticulously curated to provide you with essential details regarding transportation options and associated costs for travelling to Reading and the University of Reading. Additionally, we have included comprehensive dining recommendations, suggested accommodations, as well as noteworthy landmarks and attractions.

Our sincere hope is that this guide serves as an invaluable resource, offering clear and concise information that saves you precious time. Please feel free to refer to it whenever you seek inspiration or require guidance during your stay.

Table of Contents

| | |
|--|-----------|
| Introduction to Reading | 3 |
| Conference Venue and Reception | 4 |
| Palmer Building | 4 |
| Meadow Suite | 5 |
| Reception | 7 |
| Reaching to Reading | 8 |
| Plane | 8 |
| Taxi (Airport to Reading) | 8 |
| Train (Airport/other cities to Reading) | 9 |
| <i>Find a route and buy a ticket</i> | 9 |
| <i>Prices and times</i> | 10 |
| Bus (Airport to Reading) | 11 |
| Reaching to University of Reading (Reading town centre to University) | 12 |
| Bus (Reading town centre to University) | 12 |
| <i>Find the station, price and buy a ticket</i> | 12 |
| <i>Which bus takes you to the University of Reading?</i> | 13 |
| Taxi (Reading town centre to University) | 14 |
| <i>1. Taxi stand outside the train station</i> | 14 |
| <i>2. Book the taxi in advance</i> | 15 |
| <i>3. Book the taxi using the APP</i> | 15 |
| Walk (Reading town centre to University) | 15 |
| Accommodation | 16 |
| Hotels | 16 |
| B&Bs | 19 |
| Service Apartments | 21 |
| Top restaurants in Reading according to TripAdvisor | 25 |
| Different Cuisines in and around Reading town centre: | 26 |
| Restaurants and food inside University | 27 |
| Landmarks and Activities in Reading | 28 |

Introduction to Reading

Reading (pronounced as RED-ing), is located in Berkshire, the southeastern region of England. Reading is a vibrant town and holds the title of **‘the largest town in the United Kingdom’**. With a rich history dating back to the Roman period in the 8th century, its name originates from the Readingas, an Anglo-Saxon tribe.



Benefiting from its strategic location, Reading has excellent connectivity. It is mere 38 miles from London, **easily accessible within a short 20-minute train journey**. Additionally, it is conveniently positioned 31 miles from Winchester and 39 miles from Oxford, also with efficient train connections available. This proximity has made Reading a desirable place to live, often recognized as the **London commuter belt**.

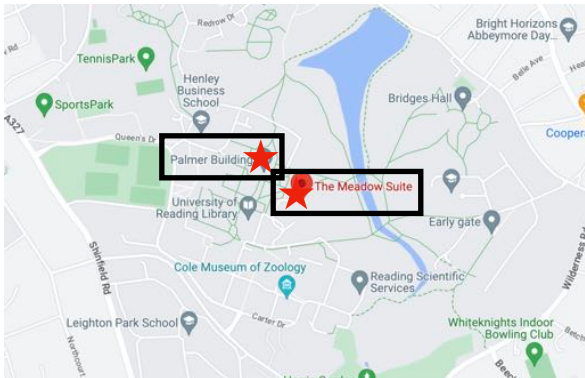
Reading is also a significant commercial and business hub. The town holds the headquarters of numerous influential local and international companies, including Microsoft, Huawei, Oracle, Deloitte, Pepsi and more.

Reading is blessed with captivating sights and abundant natural beauty. It sits at the confluence of the rivers Thames and Kennet. **Notably, Reading was named one of the best places to live in 2023 by The Sunday Times**. Moreover, the University of Reading has been recognized for its commitment to maintaining an exceptionally green environment and accessible parks, **consistently earning the prestigious Green Flag award for the past 12 years**. Hope you can also enjoy your visit to our green and safe campus.



Conference Venue and Reception

The venue for the 61st Annual Meeting of the Academy of Aphasia will be the **Palmer Building on the 21st and 22nd of October (Saturday and Sunday)** and the **Meadow Suite on the 23rd of October (Monday)**. Both conference venues are inside the University of Reading, Whiteknights campus.



| Date | Location |
|------------|---|
| 21.10.2023 | Palmer Building MERL evening reception |
| 22.10.2023 | Palmer Building |
| 23.10.2023 | Meadow Suite |

Palmer Building

The Palmer Building serves as the heart of our university and plays a pivotal role in hosting numerous major events. Its central location provides convenient access for all attendees. With a capacity to accommodate up to 400 people, the venue ensures a spacious and comfortable environment for the conference. **Lunch will be also served in the foyer.**



Palmer building: ground floor



Palmer building: first floor



Palmer G.10 lecture theatre is up for 396 people from 8 AM - 6 PM every day, which will also be the main gathering room for our conference.

Palmer G.01 – G.05 opened into 1 large space to accommodate our 30 poster boards.

Palmer 1.06 and 1.07 on the upper level are also available for us for group work.

More internal details of the Palmer building can be discovered in the 3D virtual view below.

<https://my.matterport.com/show/?m=jkxwCWNQWZd>

All entrances are equipped with automatic doors, and we have ensured that all lecture rooms are equipped with disabled-friendly services to accommodate the needs of all attendees.

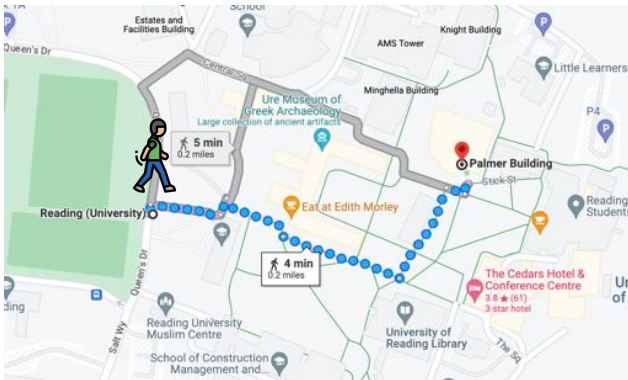
Meadow Suite

The venue on the **23rd of October** of our conference will be **The Meadow Suite, in the historic building Parkhouse, Whiteknights Campus, University of Reading.**

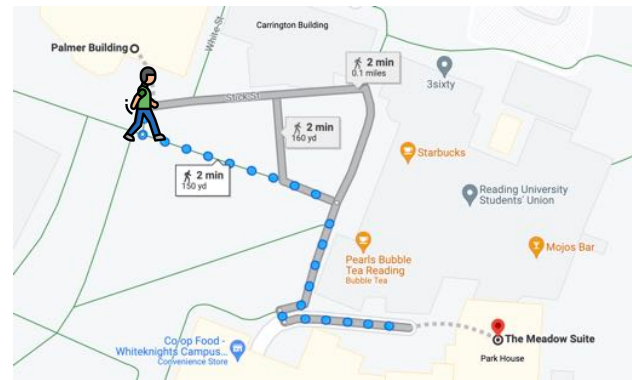


Transportation

Both venues are approximately 2.6 miles away from Reading train station, requiring a 15-minute drive (taxi fare around £8-£12), a 20-minute bus ride (£2), or a 50-minute walk. If you are in Reading town centre, as mentioned in the transportation section, we strongly recommend taking bus Line 21 and getting off at the **University of Reading Whiteknights House** station bus station and then it's just a 3-minute walk to the venues. You can also ask for directions from our staff or students, they would be very happy to answer any questions for you.



4-minute walk from the bus station to Palmer

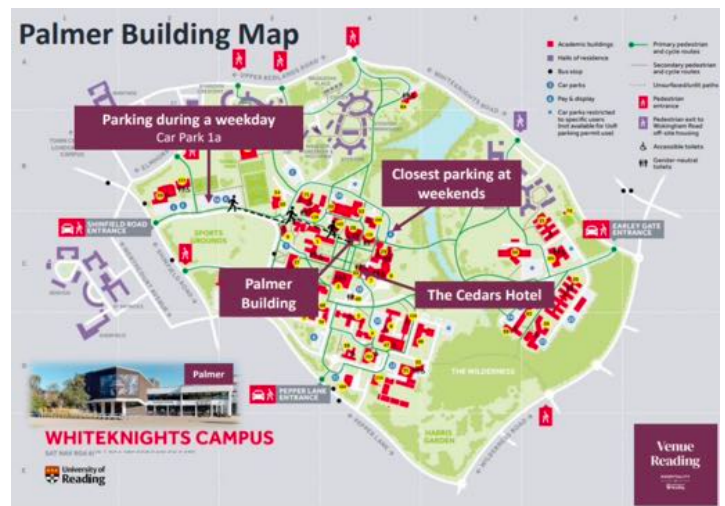


2-minute walk from Palmer to The Meadow Suite

Parking and drop off-point

Car Parking:

If you are travelling by car, please use Car Park 1a at the Shinfield Road entrance to the campus (Sports Park). You will have been provided with a parking permit for you to share with your delegates. This needs to be printed off and displayed in the window of their vehicle. You will only need a parking permit during the weekdays from 9 am to 5 pm, other times and days including weekends you will not need a parking permit anywhere on campus. Failure to display a parking permit can result in a penalty notice being issued via an external company that the University are unable to cancel or refund.



Drop Off:

Please note that the drop-off point for Palmer Building is in Car Park 4. There is no vehicle access across the quad and so any equipment will need to be taken across.

Reception

The Reception of the conference will be at **The Museum of English Rural Life**, London Road Campus, University of Reading. Click the link for more information: <https://merl.reading.ac.uk/>



The Museum of English Rural Life (MERL) provides an inviting and conducive space for attendees to gather, socialize, and partake in pleasant refreshments. Our conference reception would be at MERL **on the 21st of October (Saturday), from 6:30 PM onwards**. This venue offers a wonderful opportunity for networking, fostering new connections, and engaging in meaningful discussions outside of the conference sessions.

Transportation

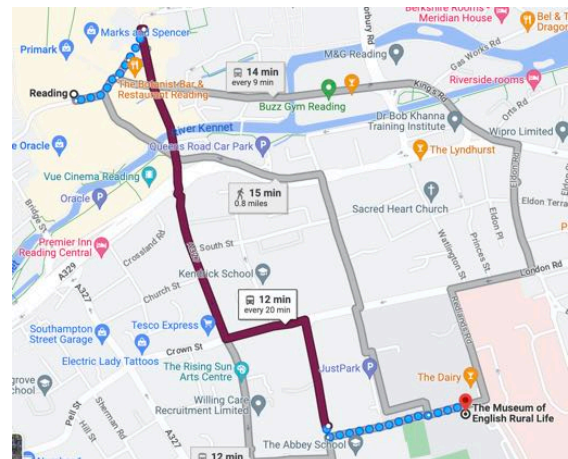
From Palmer/University of Reading Whiteknights Campus to The MERL

The MERL is located approximately 1 mile away from Palmer Building. You have two options for transportation: you can walk to MERL from Palmer, which takes about 20 minutes, or you can take the Line 21 bus. If you choose the bus, board it from UOR Chancellor's Way, and after 4 stops, you can get off at the Crown Place Passage. The bus journey typically takes around 17 minutes and costs £2.

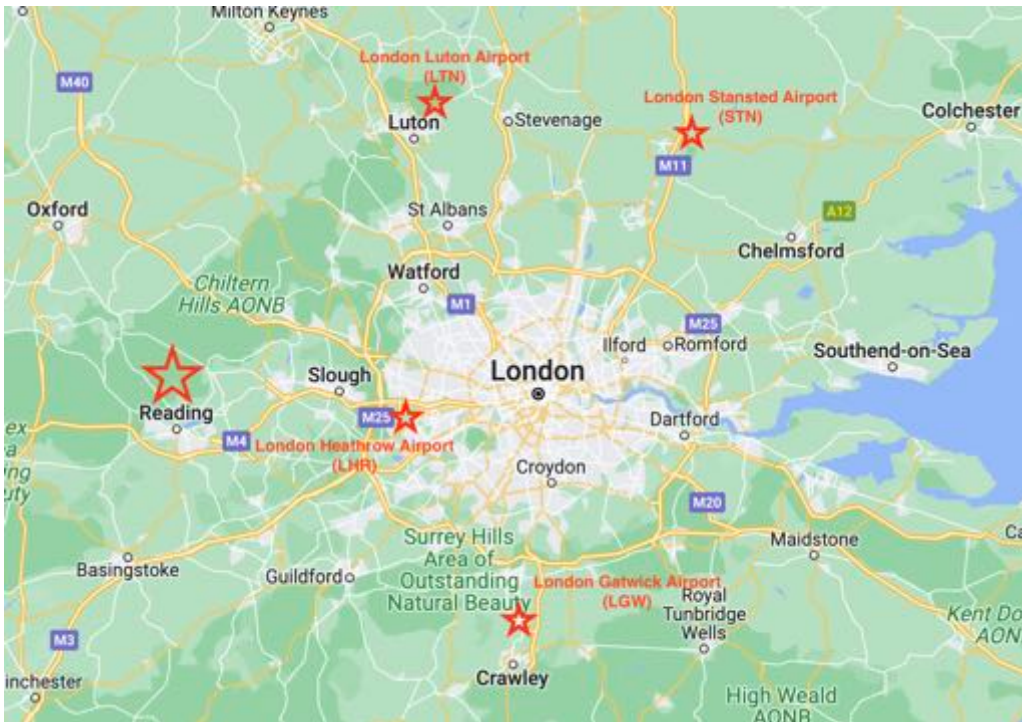


From Reading town centre to The MERL

The MERL is approximately 0.8 miles away from Reading train station, requiring an 8-minute drive (taxi fare around £6-£9), a 12-minute bus ride (£2), or a 20-minute walk. If you are in Reading town centre, as mentioned in the transportation section, we strongly recommend taking bus Line 21 and getting off at the **Crown Place Passage** bus station and then it's just a 3-minute walk to the MERL.



Reaching to Reading



Plane

If you are travelling internationally or locally and require to use the plane, we recommend you to land in London, preferably **London Heathrow Airport (LHR)** which by location is closest to Reading.

Taxi (Airport to Reading)

Pre-booking a taxi to transport you from the airport to Reading can help save money on your transport costs. Take it from the airport directly, it is more expensive. The followings are some 24/7 taxi companies.

Heathrow to Reading by taxi: 35-40 minutes
Luton to Reading by taxi: 1 hour 30 minutes

Gatwick to Reading by taxi: 1 hour 30 minutes
Stansted to Reading by taxi: 1 hour 50 minutes

Yellow Cars

A reputable local taxi company in Reading

- Website: <https://yellcars.com/>
- Number: 0118 9666 555
- Cost (normal 4-seats car)
 - Heathrow: £50-55+
 - Gatwick: £90+
 - Luton: £90+
 - Stansted: £120+
- Moreover: offer disability services



Green metro cars

Offers varied options for car types

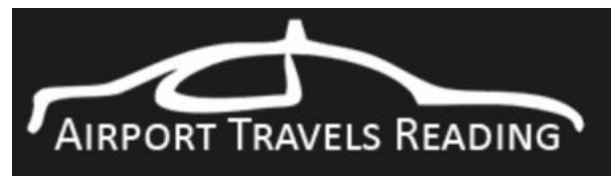
- Website: <https://greenmetrocars.co.uk/>
- Number: 01189 666 656
- Cost (normal 4-seats car)
 - Heathrow: £55+
 - Gatwick: £90+
 - Luton: NA
 - Stansted: NA
- Moreover: offer student discounts



Airport Travels Reading

On the recommendation list of TripAdvisor

- Website: <https://airporttravelsreading.com/>
- Number: 0118 950 0042
- Cost (normal 4-seats car)
 - Heathrow: £55+
 - Gatwick: £90+
 - Luton: £90+
 - Stansted: £132+
- Moreover: have multiple car options, high customer ratings



Train (Airport/other cities to Reading)

If you are travelling from another city in the UK or intends to take the train from the airport to Reading, then you are also very lucky because **Reading is incredibly convenient to travel by train**. Reading has an impressive and expansive train station with over 17 platforms, making it the second busiest interchange station outside of London.

Find a route and buy a ticket

1. Website: You can always find the train schedule and purchase the ticket online on the National Rail website: <https://www.nationalrail.co.uk/stations/reading/>.

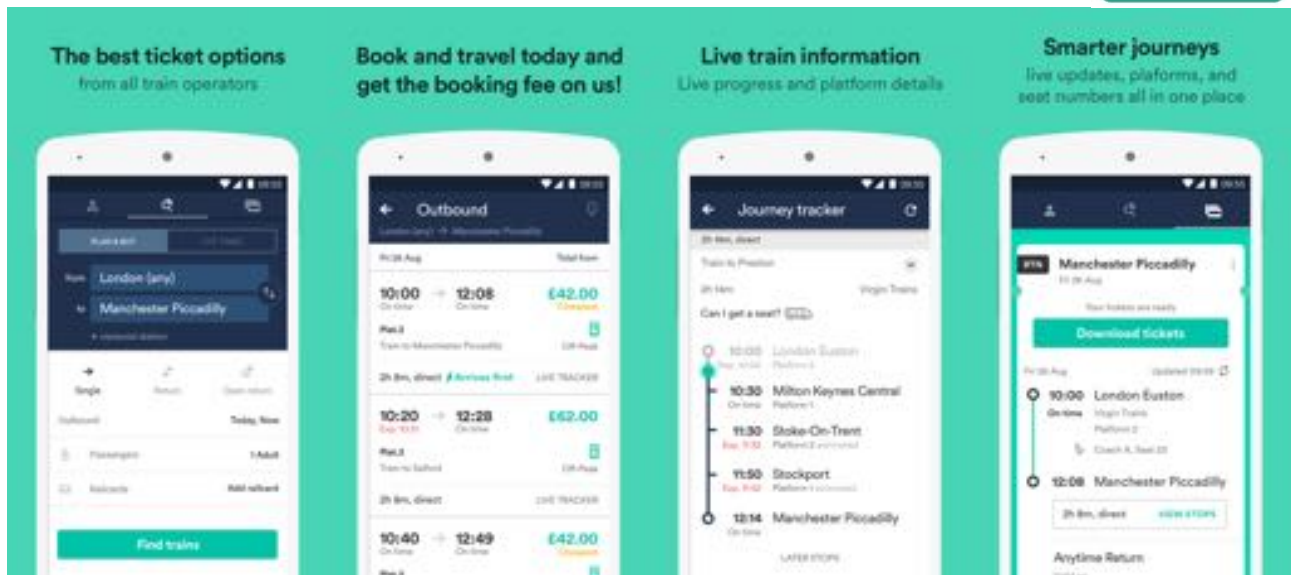


2. You can also buy tickets in person in the station, however some trains may run out of tickets.

- You can also download a third-party app, check the train times, and purchase tickets online on the APP(no extra fees will be charged).

Recommended APP: **Trainline**

You can easily check the trains and their corresponding platforms on the train line. Additionally, you have the option to download digital tickets and swipe them at the train station gate.



Prices and times

There are direct rail links from many major cities, including Birmingham, Manchester, Glasgow, Cardiff, Bristol, and Exeter, as well as a number of routes through London. There are also various railcards or loyalty programs available for purchase, such as the 25 and Under railcard, disability railcards, and others. These cards offer a 30% discount on tickets, you can find them on the APP and [official websites](#).

London Paddington station to Reading (direct rail)

- Train Duration: 20-30 minutes minimum
- Approximately leaves every 10-20 minutes
- Price:
 - one-way ticket: £21.4–20.20
 - open return ticket(can travel at any time of the day there and back): £24–55.20

Heathrow Airport to Reading (1-2 changes required)

- Train duration: 50-60 minutes
- Approximately leaves every 10-20 minutes
- Price:
 - one-way ticket: £23.4–54.20

Gatwick Airport to Reading (direct rail)

- Train duration: 1 hour 30 minutes



- Direct rail leaves every 1 hour
- Price:
 - one-way ticket: £22.50

Luton Airport to Reading (2-3 changes required)

- Train duration: 1 hour 45 minutes
- Approximately leaves every 10-20 minutes
- Price:
 - one-way ticket: £43.80

Stansted Airport to Reading (1-2 changes required)

- Train duration: 1 hour 45 minutes - 2 hours 20 minutes
- Approximately leaves every 15-30 minutes
- Price:
 - one-way ticket: £48.80



Bus (Airport to Reading)

Buses are also available to travel directly from airports to Reading. To book tickets, you can book them in person at the airport or book them online at: <https://www.railair.com/timetables> or <https://uk.megabus.com/>

Heathrow Airport to Reading

- Bus Duration: 50-60 minutes
- Approximately leaves every 30 minutes
- Price:
 - one-way ticket: £12–19

Gatwick Airport to Reading

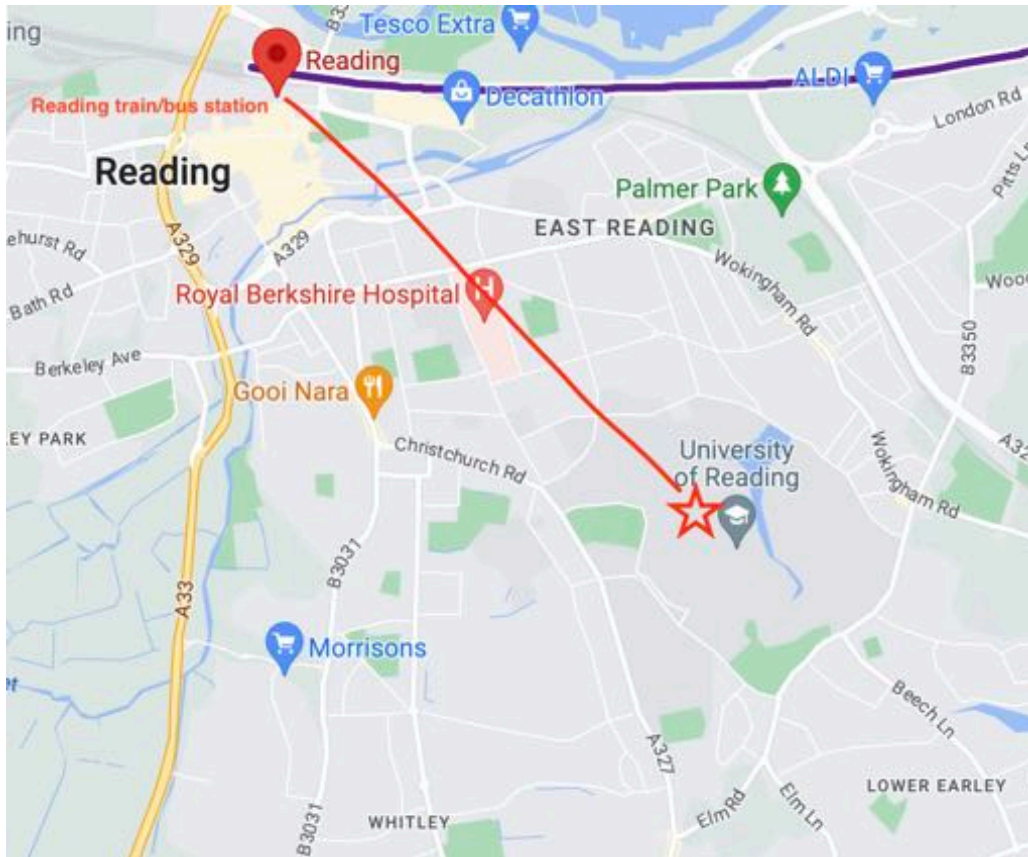
- Bus Duration: 2 hours
- Have it occasionally once per day
- Price:
 - one-way ticket: £17.55



Reading Train station

Reaching to University of Reading (Reading town centre to University)

Once you arrived at the train station/bus station, you will find yourself in Reading town centre. Then you can take a bus/taxi/walk to the University of Reading (1.8 miles) or to your accommodation.



Bus (Reading town centre to University)



Reading Bus provides bus links around Reading and all across the Thames Valley.

Find the station, price and buy a ticket

You can find the bus station you are going on [google maps](#) or on [Reading buses APP](#).



We recommend downloading the Reading buses APP so that you can check the bus schedule and buy tickets online. Reading buses offer discounts for 18 and below
<https://www.reading-buses.co.uk/>

Price

Single ticket: £2

Day ticket: £3.40

Young person single ticket: £1.70

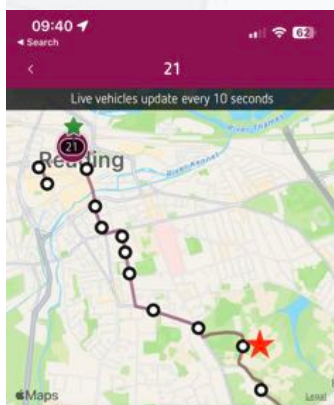
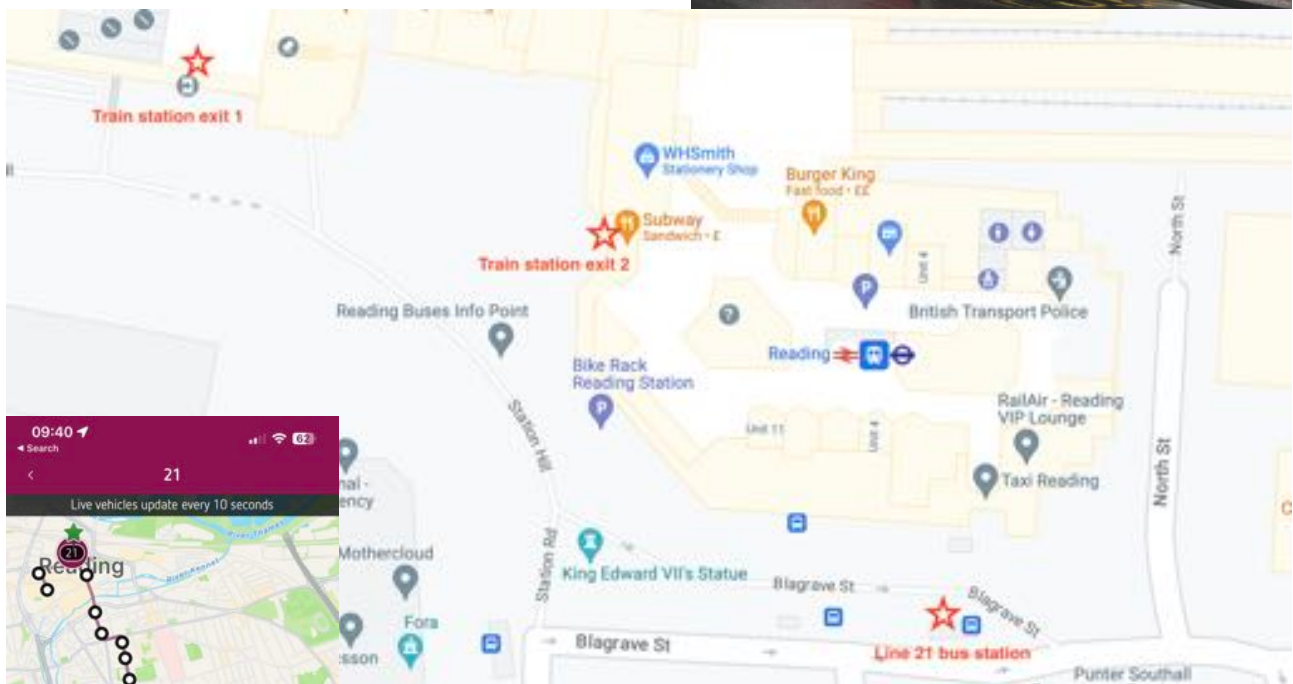
Young person 1-Day ticket: £2.60

You can also purchase the ticket **directly from the bus driver** when you board the bus. There's no need to inform the driver about your destination bus station; simply let them know which ticket you would like to purchase. It's important to note that payment can only be made with a **contactless bank card or exact change**.

Which bus takes you to the University of Reading?

1. Line 21 and 21a

The 21 and 21a buses are **red buses** that operate between Reading train station in the town centre and our Whiteknights campus at regular **20-minute intervals**, 24 hours a day. The bus stops are conveniently located just outside the station. **We highly recommend taking bus line 21, as it is the only bus that will drop you off directly inside the university premises, requiring only a short walk to the conference room.**



| | | |
|-------|-------------------------------|---|
| 09:58 | Crown Street | 🕒 |
| 10:00 | Kendrick Student Village | 🕒 |
| 10:00 | Crown Place Passage | 🕒 |
| 10:01 | Morgan Road | 🕒 |
| 10:03 | Vicarage Road | 🕒 |
| 10:05 | Christchurch Green | 🕒 |
| 10:08 | UoR Whiteknights House | 🕒 |

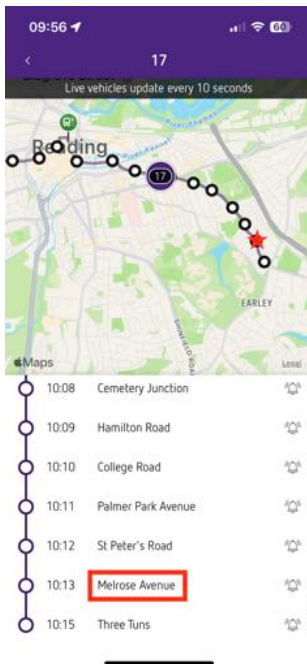
You can check the bus time from the Reading Buses APP or at the bus station there will be a rolling board indicating the remaining time of waiting.

You need to get off at the **UOR Whiteknights House** station which is only less than 3 minutes walk to the venue.

The Duration of the bus trip is approximately **15-20 minutes**.



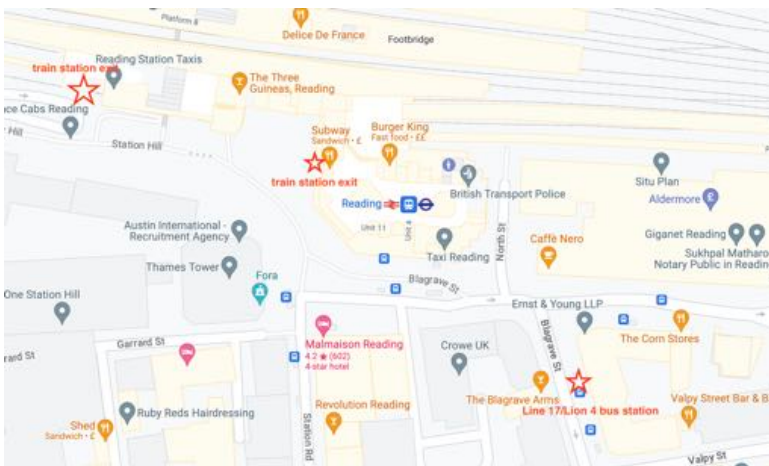
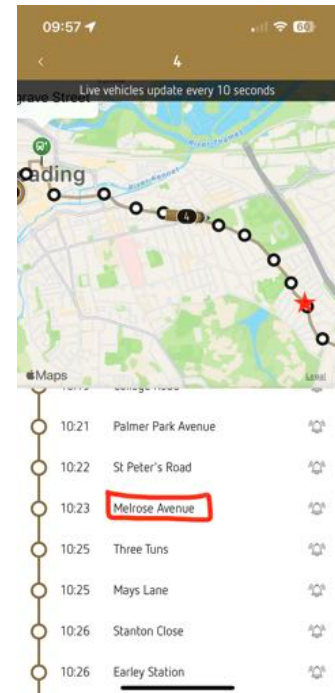
2. Line 17/Lion 4



The 17 buses, known as the **purple buses**, operate between Reading town centre and our Whiteknights campus at regular 8-minute intervals, 24 hours a day. They are often referred to as the 'Backbone of Reading'. Additionally, the Lion 4 buses, which are **yellow/brown buses**, also provide transportation from the Reading Centre to a location near the University of Reading.

You will need to get off at the **Melrose Avenue** station, which is about 15 minutes walk to the conference venue.

The duration of the bus trip is approximately 15-20 minutes.



If you want to know further information about travelling to the University by bus from the surrounding area or traveling to Reading by bus, you can find more information at: <https://www.reading-buses.co.uk/>

Taxi (Reading town centre to University)

1. Taxi stand outside the train station



There is a taxi stand located right outside the train station, so there is no need to book in advance. You can simply hop into a taxi and inform the driver of your destination. The journey typically takes around 7-12 minutes, and the price usually amounts to approximately £8-£12.

2. Book the taxi in advance

You also have the option to pre-book a taxi, ensuring that they pick you up directly from the station. By doing so, you'll have more choices in terms of car types and potentially receive a higher quality of service.

Yellow Cars

A reputable local taxi company in Reading

- Website: <https://yellcars.com/>
- Number: 0118 9666 555
- Cost (normal 4-seats car): £7+
- Moreover: offer disability services



3. Book the taxi using the APP

In Reading, we recommend you use **Ola** instead of Uber because the majority of the drivers in Reading are with Ola. Usually, it takes about 2-10 minutes to wait for a driver to accept your order.

Price: £7+

Reminder: Ola will charge £9 as a deposit, it will return to your bank after your journey ends.



Walk (Reading town centre to University)

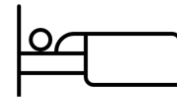


If you don't have much luggage to carry, walking can be a healthy and environmentally friendly option to consider. The distance from the train station to the University centre is approximately 4.5 km, which **takes around 40 minutes on foot**. By choosing to walk, you can enjoy the scenic views of Reading and immerse yourself in exploring the town. We recommend using Google Maps or other navigation apps to guide you along the way.



Welcome!

Accommodation



There is a wide variety of accommodation around Reading, suiting all budgets and facilities needed. You can also find accommodation on [Booking](#), [Airbnb](#), [Expedia](#) and etc. And here are some popular hotels, B&Bs and service apartments. **All pictures are from their official websites.**

Hotels

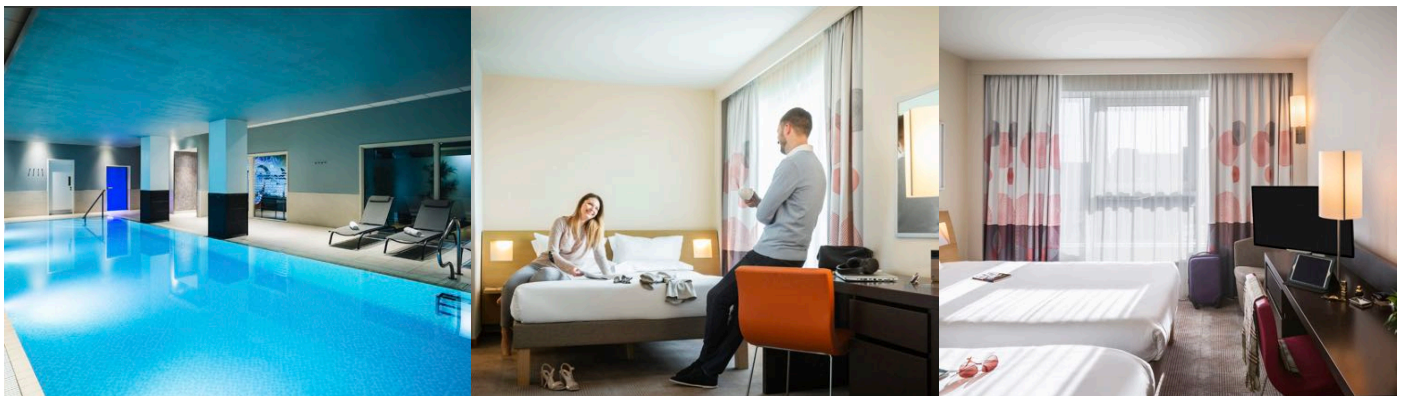
The Roseate Reading ★ ★ ★ ★ ★



This luxury and historical hotel is located within the beautiful Forbury Gardens and offers a fine dining restaurant and bar. It is located 5 minutes away from Reading Rail station and a 12-minute drive to the university.

- Rating: google map 4.4 out of 5; trip advisor 4.5 out of 5, Booking 8.6 out of 10
- Website: [The Roseate Reading Website](#)
- Location: 26 The Forbury, Reading RG1 3EJ
- Contact number: 0118 952 7770
- Price: £131-164 per night
- Facilities: babysitting, taxi service, bathrobes, iron, ensures, minibar, refrigerator, radio, TV, massages, 24-hour check-in and etc

Novotel Reading Centre ★ ★ ★ ★



Novotel has an excellent central location and is convenient for rail stations and buses and also offers a warm pool and steam. The hotel is an 11-minute drive or 40-minute walk from the university.

- Rating: google map 4.1 out of 5; trip advisor 4.0 out of 5, Booking 7.7 out of 10
- Website: <https://all.accor.com/hotel/5432/index.en.shtml?dateIn=&nights=&compositions=1&stayplus=false&snu=false#origin=novotel>
- Location: 25b Friar St, Reading RG1 1DP
- Contact number: 0118 952 2600

- Price: £97-116 per night
- Facilities: Free Wi-Fi, fitness centre with gym, spa, sauna, indoor heated pool, restaurant, breakfast buffet, breakfast in the room, kids stay free, non-smoking rooms, air conditioning, coffee/tea maker, iron and etc.

Premier Inn (Reading Central Hotel) ★ ★ ★



The Premier Inn is located in the heart of the town centre, with close proximity to the university. The hotel to the university is an 8-minute drive or 34-minute walk.

- Rating: google map 4.0 out of 5
- Website: <https://www.premierinn.com/gb/en/hotels/england/berkshire/reading/reading-central.html>
- Location: Letcombe St, Reading RG1 2HN
- Contact number: 0333 321 8345
- Price: £49-110 per night
- Facilities: Free Wi-Fi, air conditioning, family rooms, chargeable offsite parking

ibis Reading Centre ★ ★ ★



ibis is a modern and vibrant designed hotel with a perfect location and is an excellent choice for both business and leisure guests. The hotel is a 16-minute drive or 45-minute walk from the university.

- Rating: google map 4.1 out of 5
- Website: [ibis Reading Centre Hotel website](#)
- Location: 25A Friar St, Reading RG1 1DP

- Contact number: 01189533500
- Price: £48-90 per night
- Facilities: Free Wi-Fi, paid breakfast, paid parking, air conditioning, pet friendly and etc.

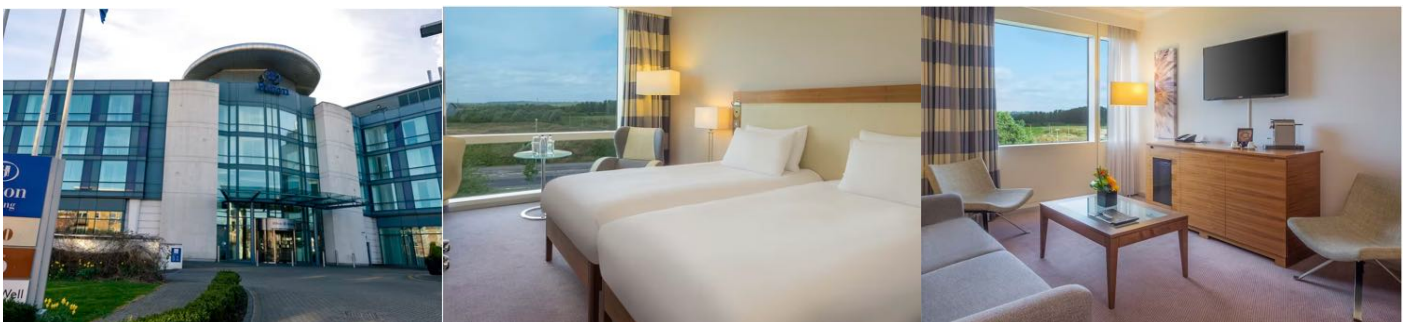
Malmaison Reading ★ ★ ★ ★



The Malmaison Hotel is a modern reworking of the Great Western Hotel, which was built in 1844 and is reputed to be the oldest surviving railway hotel in the world. The hotel's central location makes it very easy to travel to the university with a 16-minute drive or 45-minute walk.

- Rating: google map 4.2 out of 5, bookings 8.2 out of 10
- Website: [Malmaison Hotel on Booking.com](https://www.booking.com/hotel/gb/malmaison-reading.html)
- Location: 18-20 Station Rd, Reading RG1 1JX
- Contact number: 01183341331
- Price: £89-119
- Facilities: Free Wi-Fi, paid breakfast, child friendly, paid parking, air conditioning, pet friendly and etc.

Hilton Reading ★ ★ ★ ★



The Hilton Reading offers modern rooms that suit all needs. There is a health club which has a gym, pool, and sauna/ steam rooms. The hotel is a 10-minute drive or 35-minute walk to the university.

- Rating: google map 4.4 out of 5; trip advisor 4.5 out of 5, Booking 8.2 out of 10
- Website: [Hilton Hotel Website](https://www.hilton.com/en/hotels/rdhnh/)
- Location: Drake Way, Reading RG2 9GQ
- Contact number: 0118 916 9000
- Price: £120-144 per night
- Facilities: Free Wi-Fi, fitness centre with gym, spa, sauna, indoor heated pool, restaurant, breakfast buffet, non-smoking rooms, air conditioning, iron and etc.

B&Bs

Lovely Home



The accommodation offers an en-suite double bedroom with a garden, shared lounge and shared kitchen. The accommodation is an 8-minute drive or a 20-minute walk to the university.

- Rating: Booking 8.8 out of 10
- Website: [Lovely home on Booking.com](#)
- Location: 41 Brighton Road, Reading RG6 1PS
- Price: £71-74 per night
- Facilities: Free Wi-Fi, air conditioning, family rooms, parking, amazing breakfast, full ensuite

Crown Lodge Guest House

Crown Lodge Guest House is a beautiful 1860s house that is a seven-minute walk from the town centre. The accommodation is a 13-minute drive or a 48-minute walk to the university.

- Rating: Google Map 4.2 out of 5
- Website: [Crown Lodge Guest House Website](#)
- Location: 27 Russell St, Reading RG1 7XD
- Price: £69-115 per night
- Facilities: Free Wi-Fi, air conditioning, family rooms, parking, single ensuite and etc



Spacious double in hospital/uni area with parking

Lovely top floor (two flights of stairs) with a double room with an adjacent sole-use bathroom. The accommodation is a 10-minute walk from University.

- Rating: Airbnb 5 out of 5
- Website: [Airbnb website for this accommodation](#)
- Price: £50
- Location: Redlands Road, Reading
- Facilities: room in a home, Free Wi-Fi, air conditioning, free parking, ensuite, garden and etc



Room in a bungalow hosted by Toni



Comfortable room with double bed and ensuite facilities with shower. The accommodation is a 10-minute walk from University.

- Rating: Airbnb 4.8 out of 5
- Website: [Airbnb website for this accommodation](#)
- Price: £38 per night
- Location: Hartsbourne Road, Reading
- Facilities: room in a home, Free Wi-Fi, free parking, ensuite, no lock on the door and etc

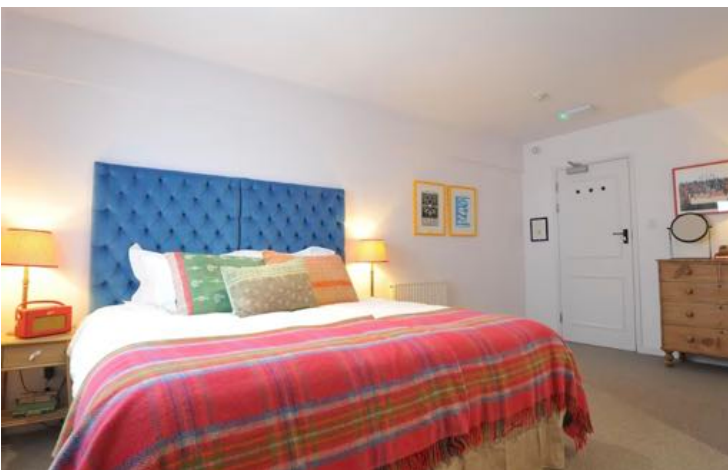
Room in a rental unit hosted by Martin

“Exceptionally spacious master bedroom with original Victorian cornice and feature fireplace. You can use my kitchen and bathroom and beautiful garden. I'm living on the property together with my 2 cats.”
5 minutes walk to University.

- Rating: Airbnb 4.86 out of 5
- Website: [Airbnb website for this accommodation](#)
- Price: £50 per night
- Facilities: room in a home, Free Wi-Fi, free parking, shared bathroom, pet friendly and etc



Bel & The Dragon



“You can look forward to a terrace, a cafe and a bar at Bel & The Dragon Reading. The on-site British cuisine restaurant features light fare. Stay connected with free in-room WiFi.”
10 mins drive to University.

- Rating: Expedia 9 out of 10
- Website: [Expedia website for this accommodation](#)
- Price: £140 per night
- Location: Blakes Lock, Gas Works Road, Reading, England, RG1 3EQ
- Facilities: Free Wifi, inside a bar and cafe, TV, pets not allowed, free parking

Service Apartments

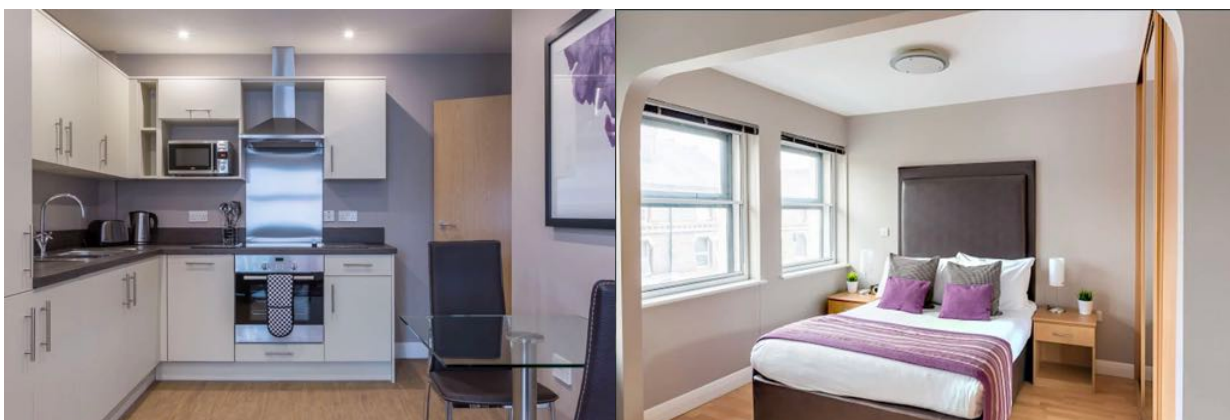
Premier Suites Reading



Premier Suites Reading are based in central Reading. The modern serviced apartments are an excellent choice for those not wanting to stay in hotels or B&Bs. The accommodation is a 10-minute drive or 40-minute walk to the university.

- Rating: Google Map 4.4 out of 5
- Website: [Premier Suites Website](#)
- Location: Minster Court, Minster St, Reading RG1 2JF
- Number: 0118 324 9700
- Price: £100-120 per night
- Facilities: Free Wi-Fi, pet friendly, air conditioning, parking, housekeeping and etc

House of Fisher City Wall House Aparthotel Reading

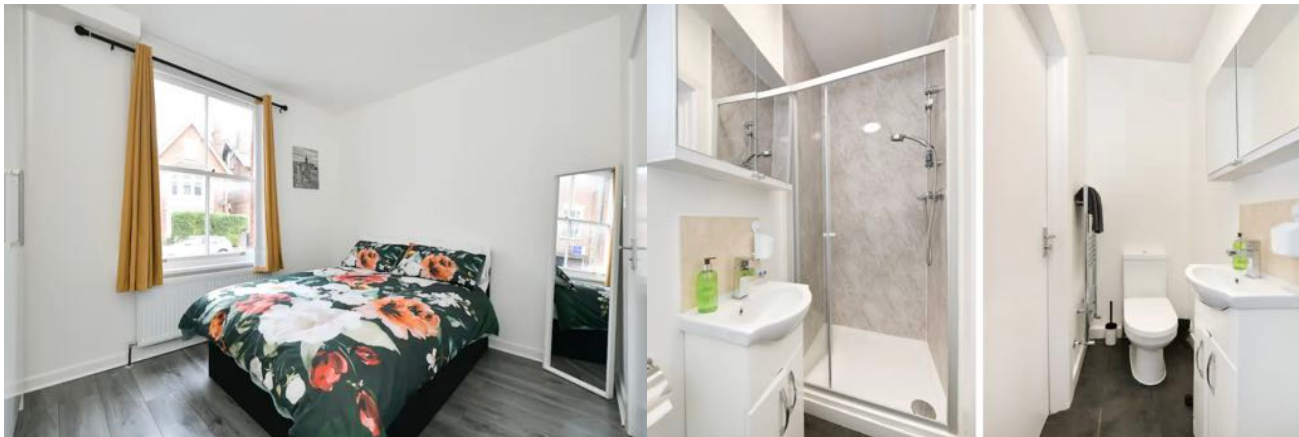


City Wall House Aparthotel is based in the centre of Reading, offering a selection of different fully furnished apartments. This serviced apartment is a 10-minute walk to the train station, a 12-minute drive or 40-minute walk to University

- Rating: Google Map 3.5 out of 5
- Website: [City Wall House Aparthotel Reading website](#)
- Location: City Wall House, 26 west street, Reading RG1 1TZ

- Number: 0118 951 4151
- Price: £90-100 per night
- Facilities: Free Wi-Fi, hair dryer, towels, parking, dishwasher and etc

Entire rental unit hosted by Olga



“This is a bright, clean and spacious studio room with an en suite shower. You will enjoy easy access to everything from this building as it's centrally located and is just 4 mins walk to the Town centre.” The accommodation is a 15-minute drive from University.

- Rating: Airbnb 4.71 out of 5
- Website: [Airbnb website for this accommodation](#)
- Price: £38
- Location: Zinzan St, Reading
- Facilities: hair dryer, microwave, kitchen, Free Wi-Fi, free parking, studio

The Superior Apartment @ Laurel House



“Laurel House, situated in the sought-after RG1 area of central Reading, offers fabulous executive one-bedroom fully serviced, smart and stylish apartments.” The accommodation is a 15-minute walk from University.

- Rating: Airbnb 4.90 out of 5
- Website: [Airbnb website for this accommodation](#)
- Price: £131

- Location: Erleigh Rd, Reading
- Facilities: hair dryer, HDTV, heating, delicate workspace, kitchen, Free Wi-Fi, free parking etc

Beautiful Reading City Centre two-bedroom two bathroom apartment



“Modern, two bedroom, two bathroom beautiful apartment with fantastic panoramic views over Reading City centre and an underground allocated car parking space.” This accommodation is 40 minutes walk/15 minutes drive to the university.

- Rating: Airbnb 4.85 out of 5
- Website: [Airbnb website for this accommodation](#)
- Price: £106
- Location: Queen’s Road, Reading
- Facilities: washing machine, HDTV, heating, kitchen, Free Wi-Fi, paid parking etc

Modern Victorian Apartment with Private Parking



“The apartment is for your sole use. The open plan living space contains a sofa with a pull-out double bed, wall mounted TV with Netflix, a dining table with 4 seats that doubles as a workspace and cushions and blankets for your comfort. In the kitchen, you will find a microwave, toaster, oven, hob, fridge and washer and dryer. The bedroom houses a King Size Bed with white cotton sheets, an abundance of hanging and drawer storage and wireless phone charging.” This accommodation is a 20-minute walk from the university.

- Rating: Airbnb 4.88 out of 5
- Website: [Airbnb website for this accommodation](#)
- Price: £72 per night
- Location: London Road, Reading
- Facilities: self-check-in, HDTV, heating, full set kitchen, Free Wi-Fi, paid parking, essentials etc

Central Serviced Apartment Reading Parking 3 guest by Sinead



“Our modern, unique, newly refurbished home is the perfect place for your stay. Enjoy the huge luxury 2-metre freestanding bath and power shower in our luxury spa bathroom, and relax watching SkyQ TV on a choice of two 50-inch 4K Smart TVs with Net flex...”

- Rating: Airbnb 4.76 out of 5
- Website: [Airbnb website for this accommodation](#)
- Price: £74 per night
- Facilities: 1 bedroom, 2 beds, Free parking on premises, Free Dryer, Full kitchen set, baby friendly

SACO Reading - Castle Crescent



“Along with self-parking, this smoke-free apartment building has express check-out and free WiFi. Each apartment provides a kitchen with a fridge, a stovetop, a microwave and a dishwasher. For a bit of entertainment, a flat-screen TV comes with digital channels, and guests can also appreciate conveniences, such as a washer/dryer and a dining area. Weekly housekeeping is available.”

- Rating: Expedia 8.8 out of 10
- Website: [Expedia website for this accommodation](#)
- Price: £96 per night for one bedroom, £220 per night for two bedrooms
- Facilities: Self parking(£10 per day), heating, housekeeping weekly, no pets allowed

Food and Restaurant

Reading is home to a variety of different delicious cuisines from across the globe. A lovely mix of well-known chains and independent local businesses offers everything from quick fast food to luxury fine dining.



Top restaurants in Reading according to TripAdvisor

1. Buenasado Argentine Steakhouse- Reading

- Argentinian, Grill, steakhouse
- Price: £25ish
- Location: The Oracle, Lower 28, Bridge St, Reading RG1 2AQ
- Number: 01189589550



2. Miller and Carter

- European, Grill, steakhouse
- Price: £25-30
- Location: Unit 5, Berkshire, The Oracle Centre, Reading RG1 2AG
- Number: 01189509961

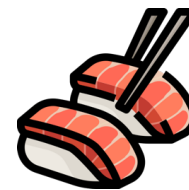
3. Coconut Bar & Kitchen

- Asian, bar
- Price: £20-25
- Location: 62 St Mary's Butts, Reading RG1 2LG
- Number: 01189598877



4. Osaka

- Japanese, Sushi
- Price: £20-30
- Location: Unit R16, Riverside Mall Level, Reading RG1 2AG
- Number: 01189573200



5. Las Iguanas

- Mexican, Brazilian
- Price: £25ish
- Location: Riverside, The Oracle, Reading RG1 2AG
- Number: 01189071980



Different Cuisines in and around Reading town centre:

American

- Wendy's
- Popeye's
- Five Guys
- TGI Fridays
- Bluegrass BBQ

British

- Bill's Reading Restaurant
- The Botanist Bar and Restaurant Reading
- Toby Carvery
- The Hope Tap

Buffet

- Cosmo Reading

Chinese

- New Happy Garden
- Kungfu Kitchen
- Holly's Kitchen
- The memory of Szechuan

French

- Cote Reading

Greek

- The Real Greek
- Tasty Greek Souvlaki

Italian

- Zizzi
- Pizza Express
- Franco Manca
- Prezzo
- Mama's way

Feel free to explore more on Google Maps, Tripadvisor, OpenTable and etc.

Indian

- Star Karahi
- Sizzling Spice
- Gulab Indian Kitchen
- House of Flavours

Japanese

- Osaka Reading
- Kokoro
- Intoku
- Sushimania

Korean

- Gooi Nara
- The SOJU

Lebanese

- Comptoir Libanais
- Bakery house
- Palmyra

Mexican

- Mission Burrito
- Tortilla

Vietnamese

- Pho
- Banh Mi QB

Vegetarian/ Vegan

Most restaurants in Reading offer a nice variety of vegetarian meals, but the restaurants below are specifically vegetarian or vegan specific so will have a much wider variety.

- Madras Flavours Pure Indian Vegetarian Restaurant
- Vegivores (Vegan)
- Crispy Dosa Restaurant
- Bhel Puri House

Restaurants and food inside University

If you want to eat somewhere close to the venue, you can also visit the restaurants for food shops inside the university!



Park House is one of the historic houses in Reading, offering local craft beer, ales, whiskey and wines. The menu celebrates the essential requirement any diner needs for an enjoyable meal – taste. Alongside delicious daily specials, there is a range of vegetarian, vegan, and gluten-free options. Our University of Reading beef is sourced from the University Shinfield farm, just 3 miles away!

- Price: £20-25
- Location: Park House, Whiteknights Campus, Reading RG6 6EF
- Phone number: 01189875123
- Opening times for food service: Monday to Saturday 12:00-15:30 and 16:30-21:00. Sunday 12:00-16:00
- Distance from the venue: 1 minutes walk

University eat at the square

Eat at the Square is the cafeteria for University of Reading students and staff, it offers a pay-on lunch service. Pay-on-Entry Lunch runs from 11:30 am to 2:30 pm. It is served as a buffet, offering multiple main dishes, a special dish of the day, a salad bar, a drink bar, fresh fruit, a cookie bar, etc.

- Price: £8.80 per person
- Location: eat at Square, Whiteknights Campus, Reading RG6 6EF
- Phone number: 01183785555
- Opening times for food service: Monday to Friday 11:30 AM-2:30 PM
- Distance from the venue: 1-minute walk

Mojo Bar

Mojos Bar opens five days a week and with an excellently stocked bar and a great patio and meadow outlook. The Mojos menu offers some of the tastiest food on campus, at student prices (£10-15) and all cooked to order. Vegetarian and gluten-free options are also available. In the evenings, Mojos hosts quiz and karaoke nights, live music events, comedy nights and our not to be missed Wednesday and Saturday Union nights.

Bagelmen

Bagelmen is located in the centre of the University. It is a popular place among students and staff to get quick food for lunch and dinner.

- Price: £5 per person
- Location: Student Union, Reading RG6 6AZ
- Distance from the venue: 1-minute walk

Coop

Coop is a conveniently located shop situated in the heart of the University. If you're looking for a quick and affordable lunch option, Coop is the ideal place to visit. They offer a meal deal which includes a choice of a main item such as a sandwich, wrap, or sushi, along with a snack and a drink, all for just £3.50.

Landmarks and Activities in Reading

Reading is an illustrious town with rich history and adored with captivating landmarks. Beyond its historical significance, it thrives as a rising commercial centre with various activities. Here we listed a couple of activities and landmarks you can explore.



Jogging at the university enjoy the green campus

Students recommended jogging route on campus website: <https://www.rusu.co.uk/student-activities/sports-and-dance/get-your-jog-on/>



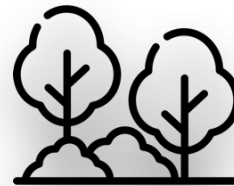
Watch a movie in Reading town centre Vue Cinema

Riverside Rd, Reading RG1 2AG
Website: <https://www.myvue.com/cinema/reading/whats-on>



Reading Museum

Blagrove St, Reading RG1 1QH
Website: <http://www.readingmuseum.org.uk/>



Harris Garden

University of Reading
Website: <https://www.youtube.com/watch?v=x1GVINdxCgs>



The Museum of English Rural Life

Reading RG1 5EY
website: <https://merl.reading.ac.uk/>



Oracle Shopping centre

Reading RG1 2AG
Website: <https://www.theoracle.com/>

Photos reference: All photos are from their official websites

https://www.berkshirehistory.com/odds/reading_town_hall.html

<https://www.thetimes.co.uk/article/reading-berkshire-best-place-to-live-uk-2023-b383k8w90>

<https://www.google.co.uk/maps>

<https://www.reading-buses.co.uk/>

<https://www.concur.co.uk/app-centre/listings/57fd5e96140411120087e9dd>

<https://www.hospitalityuor.co.uk/casual-dining/the-square/>

[*City Wall House Aparthotel Reading website*](#)

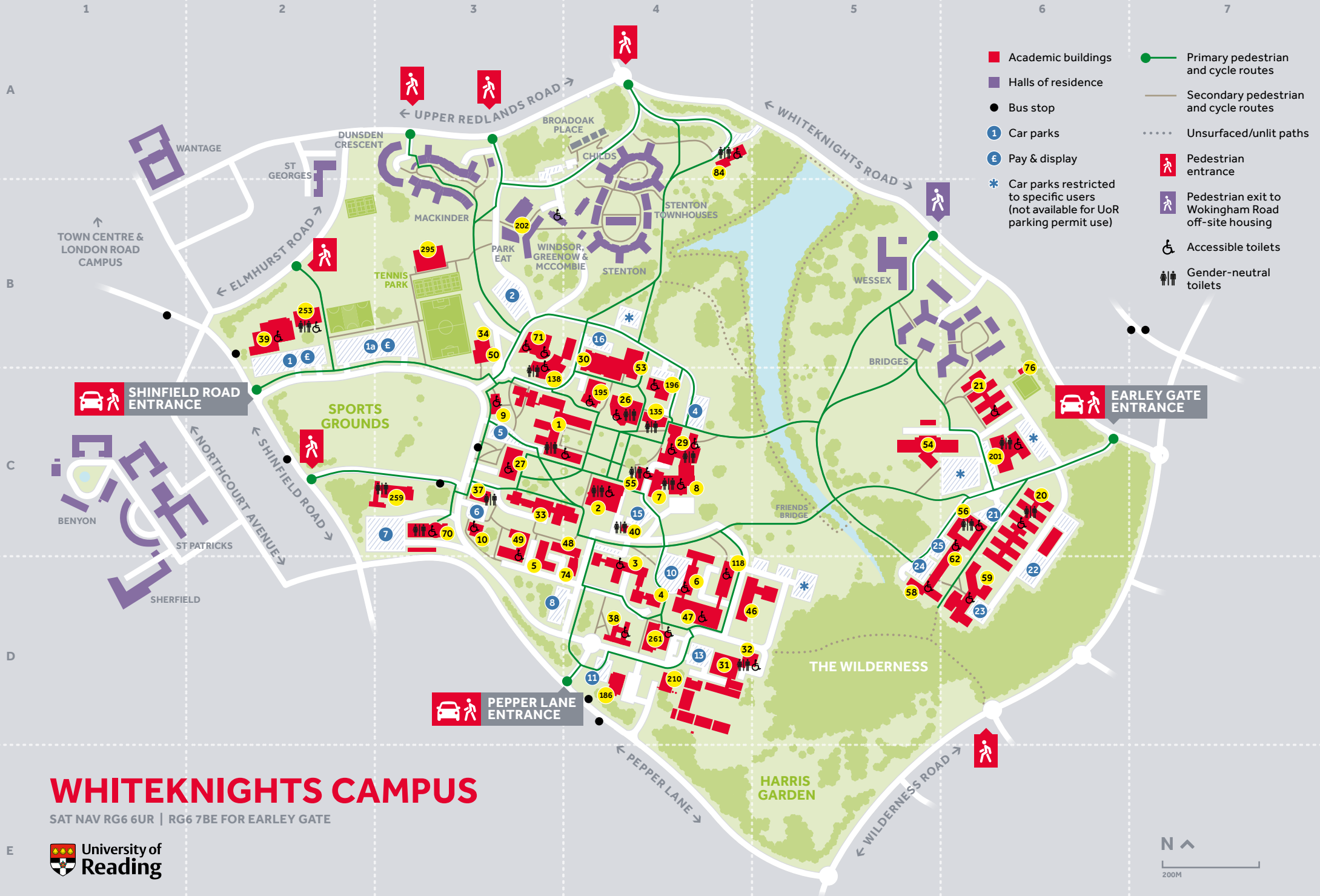
[*The Roseate Reading Website*](#)

[*Premier Suites Website*](#)

University of Reading Image Bank

<https://www.airbnb.co.uk/>

<https://www.booking.com/>



- Academic buildings
- Halls of residence
- Bus stop
- ① Car parks
- £ Pay & display
- * Car parks restricted to specific users (not available for UoR parking permit use)
- Primary pedestrian and cycle routes
- Secondary pedestrian and cycle routes
- ⋯ Unsurfaced/unlit paths
- 🚶 Pedestrian entrance
- 🚶 Pedestrian exit to Wokingham Road off-site housing
- ♿ Accessible toilets
- ♂♀ Gender-neutral toilets

WHITEKNIGHTS CAMPUS

SAT NAV RG6 6UR | RG6 7BE FOR EARLEY GATE



WHITEKNIGHTS MAP KEY (A-Z)

| No. | Name and grid ref | Building |
|-----|---|--------------------------|
| 29 | 3sixty bar C4 | Students' Union |
| 135 | Accommodation Office C4 | Carrington |
| 59 | Agriculture, Policy and Development D6 | Agriculture |
| 48 | Allen Laboratory C4 | The Allen Laboratory |
| 49 | Applicant Engagement C3 | Miller |
| 74 | Archaeology D4 | Archaeology |
| 5 | Archaeology, Geography and Environmental Sciences (SAGES) D3 | Wager |
| 20 | Art C6 | TOB 1 |
| 800 | Astroturf Pitch B3 | Astroturf Pitch |
| 54 | Berkshire Healthcare NHS Foundation Trust (BHFT) C5 | Erleigh House |
| 31 | Biological Sciences D4 | Harborne |
| 118 | Biological Sciences D4 | Hopkins |
| 32 | Biological Sciences D4 | Philip Lyle |
| 261 | Biological Sciences Teaching Laboratories D4 | Health and Life Sciences |
| 38 | Biomedical Engineering D4 | Polly Vacher |
| 10 | Blandford Lodge C3 | Blandford Lodge |
| 55 | Co-Op Supermarket C4 | Cedars Hotel |
| 135 | Careers, Placement and Experience Centre C4 | Carrington |
| 135 | Carrington C4 | Carrington |
| 8 | Catering, Hotel and Conference Services C4 | Park House |
| 55 | Cedars Hotel C4 | Cedars Hotel |
| 186 | Central Kitchen | Central Kitchen |
| 59 | Centre for Agricultural Strategy D6 | Agriculture |
| 59 | Centre for Agri-Environmental Research D6 | Agriculture |
| 138 | Centre for Entrepreneurship C3 | Henley Business School |
| 56 | Centre for Integrative Neuroscience and Neurodynamics (CINN) C6 | Harry Pitt |
| 10 | Centre for Quality Support and Development (CQSD) C3 | Blandford Lodge |
| 259 | Chancellor's C3 | Chancellor's |
| 40 | Chaplaincy Centre C4 | Park House Lodge |
| 62 | Charlie Waller Institute D6 | Psychology |
| 3 | Chemical Analysis Facility (CAF) D4 | JJ Thomson |
| 6 | Chemistry D4 | Chemistry and Pharmacy |
| 1 | Classics C4 | Edith Morley |
| 62 | Clinical Language Sciences D6 | Psychology |
| 261 | Cole Museum of Zoology D4 | Health and Life Sciences |
| 27 | Corporate Communications C3 | Whiteknights House |
| 38 | Computer Science D4 | Polly Vacher |
| 259 | Construction Management and Engineering C3 | Chancellor's |
| 135 | Counselling and Wellbeing C4 | Carrington |
| 59 | Crop Protection Unit D6 | Agriculture |
| 21 | Design and Print Studio C6 | TOB2 |

| No. | Name and grid ref | Building |
|-----|--|---|
| 49 | Department of Languages and Cultures C3 | Miller |
| 4 | Digital Technology Services D4 | Mathematics and Digital Technology Services |
| 135 | Disability Advisory Service C4 | Carrington |
| 1 | Economics C3 | Edith Morley |
| 3 | Electron Microscopy Laboratory (EML) D4 | JJ Thomson |
| 210 | Energy Centre D3 | Energy Centre |
| 1 | English Language and Applied Linguistics C3 | Edith Morley |
| 1 | English Literature C3 | Edith Morley |
| 56 | ESSC (Environmental Systems Science Centre) C6 | Harry Pitt |
| 1 | Erasmus & Study Abroad (ESAO) C3 | Edith Morley |
| 50 | Estates B3 | Estates |
| 49 | Events C3 | Miller |
| 3 | Examinations and Graduation Office D4 | JJ Thomson |
| 59 | Farm Management Unit D6 | Agriculture |
| 195 | Film, Theatre and Television C4 | Minghella Studios |
| 27 | Finance C3 | Whiteknights House |
| 47 | Food and Nutritional Sciences D4 | Harry Nursten |
| 84 | Foxhill House A4 | Foxhill House |
| 49 | Global Recruitment & Admissions D3 | Miller |
| 59 | Graduate Institute of International Development and Applied Economics D6 | Agriculture |
| 9 | Graduate School C3 | Old Whiteknights House |
| 50 | Grounds Maintenance Office B3 | Estates |
| 34 | Grounds Maintenance Yard | Estates |
| 31 | Harborne D4 | Harborne |
| 56 | Harry Pitt C6 | Harry Pitt |
| N15 | Health and Dental Centre | Health and Dental Centre |
| 261 | Health and Life Sciences D4 | Health and Life Sciences |
| 50 | Health and Safety Services B3 | Estates |
| 138 | Henley Business School C3 | Henley Business School |
| 1 | History C3 | Edith Morley |
| 27 | Human Resources C3 | Whiteknights House |
| 1 | Humanities and Social Sciences (Edith Morley) C3 | Edith Morley |
| 71 | ICMA Centre B3 | ICMA Centre |
| 138 | Informatics Research Centre C3 | Henley Business School |
| 1 | In-session English Support Programme (ISLI) C3 | Edith Morley |
| 27 | Insurance Office C3 | Whiteknights House |
| 32 | Institute for Environmental Analytics D4 | Philip Lyle |
| 135 | International Student Advice C4 | Carrington |
| 1 | ISLI (International Study and Language Institute) C3 | Edith Morley |
| 2 | IT Service Desk C3 | Library |
| 3 | JJ Thomson D4 | JJ Thomson |

| No. | Name and grid ref | Building |
|-----|---|---|
| 135 | Job Shop (students) C4 | Carrington |
| 27 | Knowledge Transfer Centre C3 | Whiteknights House |
| 84 | Law A4 | Foxhill House |
| 2 | Library C4 | Library |
| 27 | Mail Shop C3 | Whiteknights House |
| 138 | Management (School of) C3 | Henley Business School |
| 4 | Mathematics and Statistics D4 | Mathematics and Digital Technology Services |
| 2 | Maths Support C4 | Library |
| 8 | Meadow Suite C4 | Park House |
| 58 | Meteorology D4 | Brian Hoskins |
| 49 | Miller C3 | Miller |
| 195 | Minghella Studios C4 | Minghella Studios |
| 37 | Muslim Centre C3 | Archway Lodge |
| 21 | National Centre for Biotechnology Education C6 | TOB 2 |
| 58 | National Centre for Earth Observation D5 | Brian Hoskins |
| 196 | Nursery C4 | Nursery |
| 26 | Palmer C4 | Palmer |
| 8 | Park House C4 | Park House |
| 135 | Peer Support C4 | Carrington |
| 27 | Pensions Office C3 | Whiteknights House |
| 6 | Pharmacy D4 | Chemistry and Pharmacy |
| 47 | Pharmacy D4 | Harry Nursten |
| 118 | Pharmacy D4 | Hopkins |
| 3 | Pharmacy D4 | JJ Thomson |
| 1 | Philosophy C3 | Edith Morley |
| 1 | Politics and International Relations C3 | Edith Morley |
| 27 | Postal Services C3 | Whiteknights House |
| 49 | Procurement C3 | Miller |
| 62 | Psychology and Clinical Language Sciences D6 | Psychology |
| 201 | Reading Enterprise Centre C6 | Reading Enterprise Centre |
| 138 | Reading Real Estate Foundation C3 | Henley Business School |
| 46 | Reading Scientific Services Ltd (RSSL) D6 | The Lord Zuckerman Research Centre |
| 138 | Real Estate and Planning C3 | Henley Business School |
| 27 | Receipts Office C3 | Whiteknights House |
| 27 | Research and Enterprise C3 | Whiteknights House |
| 27 | Research HQ C3 | Whiteknights House |
| 135 | Room Bookings and Timetabling C4 | Carrington |
| 70 | Russell C3 | Russell |
| 27 | Security Office C3 | Whiteknights House |
| 76 | Social Club (Employees) C6 | TOB 2 |
| 201 | Southern Universities Management Services (SUMS) C6 | Reading Enterprise Centre |
| 201 | Southern Universities Purchasing Consortium (SUPC) C6 | Reading Enterprise Centre |
| 62 | Speech and Language Therapy Clinic D6 | Psychology |
| 39 | SportsPark B2 | SportsPark |

| No. | Name and grid ref | Building |
|-----|--|----------------------|
| 253 | SportsPark Pavillion B2 | SportsPark Pavillion |
| 8 | Staff Common Room C4 | Park House |
| 135 | Student Financial Support Team C4 | Carrington |
| 135 | Student Helpdesk Team C4 | Carrington |
| 49 | Student Recruitment and Outreach C3 | Miller |
| 135 | Student Services Centre C4 | Carrington |
| 29 | Students' Union C4 | Students' Union Hub |
| 49 | Students in Schools C3 | Miller |
| 21 | Study@TOB2 C6 | TOB 2 |
| 2 | Study Advice C4 | Library |
| 33 | Study Space C3 | URS |
| 59 | Support Centre D6 | Agriculture |
| 1 | Support Centre C4 | Edith Morley |
| 84 | Support Centre A4 | Foxhill House |
| 3 | Support Centre D4 | JJ Thomson |
| 10 | Teaching and Learning Deans' Office C3 | Blandford Lodge |
| 3 | Technologies for Sustainable Built Environments Centre (TSBE) D4 | JJ Thomson |
| 295 | Tennis Dome B3 | TennisPark |
| 21 | Typography and Graphic Communication C6 | TOB 2 |
| 1 | Ure Museum of Greek Archaeology C4 | Edith Morley |
| 8 | Venue Reading C4 | Park House |
| 59 | Veterinary Epidemiology and Economic Research Unit (VEERU) D6 | Agriculture |
| 27 | Vice-Chancellor's Office C3 | Whiteknights House |
| 5 | Wager D3 | Wager |
| 59 | Walker Institute for Climate System Research D6 | Agriculture |
| 27 | Whiteknights House C3 | Whiteknights House |

Catering venues

Cafés

| | | |
|-----|--------------------------------|-------------------------------|
| 59 | Agriculture snack bar D6 | Agriculture |
| 261 | Café Trilobite D4 | Health and Life Sciences |
| 138 | Henley Business School Café C3 | Henley Business School |
| 26 | Dol.cHe Vita C4 | Palmer |
| 201 | Eat at Enterprise C6 | Reading Enterprise Centre |
| 39 | Eat at SportsPark B2 | SportsPark |
| 54 | Fusion Café C5 | Science and Technology Centre |
| 71 | ICMA Centre Café Bar B3 | ICMA |
| 1 | The Breakfast Box C3 | Edith Morley |
| 2 | The Café C4 | Library |

Food and bar outlets

| | | |
|-----|--------------------------------|-------------------|
| 7 | Eat at the Square C4 | Eat at the Square |
| 8 | Eat and Drink at Park House C4 | Park House |
| 202 | Park Eat B3 | Park Eat |

Restaurants

| | | |
|---|----------------|------------|
| 8 | Blandford's C4 | Park House |
|---|----------------|------------|

WHITEKNIGHTS MAP KEY (NUMERICAL)

| No. | Name and grid ref | Building |
|-----|--|---|
| 1 | Classics C4 | Edith Morley |
| 1 | Economics C3 | Edith Morley |
| 1 | English Language and Applied Linguistics C3 | Edith Morley |
| 1 | English Literature C3 | Edith Morley |
| 1 | Erasmus & Study Abroad (ESAO) C3 | Edith Morley |
| 1 | History C3 | Edith Morley |
| 1 | Humanities and Social Sciences (Edith Morley) C3 | Edith Morley |
| 1 | In-session English Support Programme (ISLI) C3 | Edith Morley |
| 1 | ISLI (International Study and Language Institute) C3 | Edith Morley |
| 1 | Philosophy C3 | Edith Morley |
| 1 | Politics and International Relations C3 | Edith Morley |
| 1 | Support Centre C4 | Edith Morley |
| 1 | Ure Museum of Greek Archaeology C4 | Edith Morley |
| 2 | IT Service Desk C4 | Library |
| 2 | Library C4 | Library |
| 2 | Maths Support C4 | Library |
| 2 | Study Advice C4 | Library |
| 3 | Chemical Analysis Facility (CAF) D4 | JJ Thomson |
| 3 | Electron Microscopy Laboratory (EML) D4 | JJ Thomson |
| 3 | Examinations and Graduation Office D4 | JJ Thomson |
| 3 | JJ Thomson D4 | JJ Thomson |
| 3 | Pharmacy D4 | JJ Thomson |
| 3 | Support Centre D4 | JJ Thomson |
| 3 | Technologies for Sustainable Built Environments Centre (TSBE) D4 | JJ Thomson |
| 4 | Digital Technology Services D4 | Mathematics and Digital Technology Services |
| 4 | Mathematics and Statistics D4 | Mathematics and Digital Technology Services |
| 5 | Archaeology, Geography and Environmental Sciences (SAGES) D3 | Wager |
| 5 | Wager D3 | Wager |
| 6 | Chemistry D4 | Chemistry and Pharmacy |
| 6 | Pharmacy D4 | Chemistry and Pharmacy |
| 8 | Catering, Hotel and Conference Services C4 | Park House |
| 8 | Meadow Suite C4 | Park House |
| 8 | Park House C4 | Park House |
| 8 | Senior Common Room C4 | Park House |
| 8 | Venue Reading C4 | Park House |
| 9 | Graduate School C3 | Old Whiteknights House |
| 10 | Blandford Lodge C3 | Blandford Lodge |
| 10 | Centre for Quality Support and Development (CQSD) C3 | Blandford Lodge |
| 10 | Teaching and Learning Deans' Office C3 | Blandford Lodge |

| No. | Name and grid ref | Building |
|-----|--|------------------------------------|
| 20 | Art C6 | TOB 1 |
| 21 | Design and Print Studio C6 | TOB 2 |
| 21 | National Centre for Biotechnology Education C6 | TOB 2 |
| 21 | Study@TOB2 C6 | TOB 2 |
| 21 | Typography and Graphic Communication C6 | TOB 2 |
| 26 | Palmer C4 | Palmer |
| 27 | Corporate Communications C3 | Whiteknights House |
| 27 | Finance C3 | Whiteknights House |
| 27 | Human Resources C3 | Whiteknights House |
| 27 | Insurance Office C3 | Whiteknights House |
| 27 | Knowledge Transfer Centre C3 | Whiteknights House |
| 27 | Mail Shop C3 | Whiteknights House |
| 27 | Pensions Office C3 | Whiteknights House |
| 27 | Postal Services C3 | Whiteknights House |
| 27 | Receipts Office C3 | Whiteknights House |
| 27 | Research and Enterprise C3 | Whiteknights House |
| 27 | Research HQ C3 | Whiteknights House |
| 27 | Security Office C3 | Whiteknights House |
| 27 | Vice-Chancellor's Office C3 | Whiteknights House |
| 27 | Whiteknights House C3 | Whiteknights House |
| 29 | 3sixty bar C4 | Students' Union |
| 29 | Students' Union C4 | Students' Union Hub |
| 31 | Biological Sciences D4 | Harborne |
| 31 | Harborne D4 | Harborne |
| 32 | Biological Sciences D4 | Philip Lyle |
| 32 | Institute for Environmental Analytics D4 | Philip Lyle |
| 33 | Study Space C3 | URS |
| 34 | Grounds Maintenance Yard | Estates |
| 37 | Muslim Centre C3 | Archway Lodge |
| 38 | Biomedical Engineering D4 | Polly Vacher |
| 38 | Computer Science D4 | Polly Vacher |
| 39 | SportsPark B2 | SportsPark |
| 40 | Chaplaincy Centre C4 | Park House Lodge |
| 46 | Reading Scientific Services Ltd (RSSL) D4 | The Lord Zuckerman Research Centre |
| 47 | Food and Nutritional Sciences D4 | Harry Nursten |
| 47 | Pharmacy D4 | Harry Nursten |
| 48 | Allen Laboratory C4 | The Allen Laboratory |
| 49 | Applicant Engagement C3 | Miller |
| 49 | Department of Languages and Cultures C3 | Miller |
| 49 | Events C3 | Miller |
| 49 | Global Recruitment & Admissions C3 | Miller |
| 49 | Miller C3 | Miller |
| 49 | Procurement C3 | Miller |
| 49 | Student Recruitment and Outreach C3 | Miller |
| 49 | Students in Schools C3 | Miller |
| 50 | Estates B3 | Estates |

| No. | Name and grid ref | Building |
|-----|--|---------------|
| 50 | Grounds Maintenance Office B3 | Estates |
| 50 | Health and Safety Services B3 | Estates |
| 54 | Berkshire Healthcare NHS Foundation Trust (BHFT) C5 | Erleigh House |
| 55 | Co-Op Supermarket C4 | Cedars Hotel |
| 55 | Cedars Hotel C4 | Cedars Hotel |
| 56 | Centre for Integrative Neuroscience and Neurodynamics (CINN) C6 | Harry Pitt |
| 56 | ESSC (Environmental Systems Science Centre) C6 | Harry Pitt |
| 56 | Harry Pitt C6 | Harry Pitt |
| 58 | Meteorology D4 | Brian Hoskins |
| 58 | National Centre for Earth Observation D5 | Brian Hoskins |
| 59 | Agriculture, Policy and Development D6 | Agriculture |
| 59 | Centre for Agricultural Strategy D6 | Agriculture |
| 59 | Centre for Agri-Environmental Research D6 | Agriculture |
| 59 | Crop Protection Unit D6 | Agriculture |
| 59 | Farm Management Unit D6 | Agriculture |
| 59 | Graduate Institute of International Development and Applied Economics D6 | Agriculture |
| 59 | Support Centre D6 | Agriculture |
| 59 | Veterinary Epidemiology and Economic Research Unit (VEERU) D6 | Agriculture |
| 59 | Walker Institute for Climate System Research D6 | Agriculture |
| 62 | Charlie Waller Institute D6 | Psychology |
| 62 | Clinical Language Sciences D6 | Psychology |
| 62 | Psychology and Clinical Language Sciences D6 | Psychology |
| 62 | Speech and Language Therapy Clinic D6 | Psychology |
| 70 | Russell C3 | Russell |
| 71 | ICMA Centre B3 | ICMA Centre |
| 74 | Archaeology D4 | Archaeology |
| 76 | Social Club (Employees) C6 | TOB 2 |
| 84 | Foxhill House A4 | Foxhill House |
| 84 | Law A4 | Foxhill House |
| 84 | Support Centre A4 | Foxhill House |
| 118 | Biological Sciences D4 | Hopkins |
| 118 | Pharmacy D4 | Hopkins |
| 135 | Accommodation Office C4 | Carrington |
| 135 | Careers, Placement and Experience Centre C4 | Carrington |
| 135 | Carrington C4 | Carrington |
| 135 | Counselling and Wellbeing C4 | Carrington |
| 135 | Disability Advisory Service C4 | Carrington |
| 135 | International Student Advice C4 | Carrington |
| 135 | Job Shop (students) C4 | Carrington |
| 135 | Peer Support C4 | Carrington |

| No. | Name and grid ref | Building |
|-----|---|---------------------------|
| 135 | Room Bookings and Timetabling C4 | Carrington |
| 135 | Student Financial Support Team C4 | Carrington |
| 135 | Student Helpdesk Team C4 | Carrington |
| 135 | Student Services Centre C4 | Carrington |
| 138 | Centre for Entrepreneurship C3 | Henley Business School |
| 138 | Henley Business School C3 | Henley Business School |
| 138 | Informatics Research Centre C3 | Henley Business School |
| 138 | Management (School of) C3 | Henley Business School |
| 138 | Reading Real Estate Foundation C3 | Henley Business School |
| 138 | Real Estate and Planning C3 | Henley Business School |
| 186 | Central Kitchen | Central Kitchen |
| 195 | Film, Theatre and Television C4 | Minghella Studios |
| 195 | Minghella C4 | Minghella Studios |
| 196 | Nursery C4 | Nursery |
| 201 | Reading Enterprise Centre C6 | Reading Enterprise Centre |
| 201 | Southern Universities Management Services (SUMS) C6 | Reading Enterprise Centre |
| 201 | Southern Universities Purchasing Consortium (SUPC) C6 | Reading Enterprise Centre |
| 210 | Energy Centre D3 | Energy Centre |
| 253 | SportsPark Pavillion B2 | SportsPark Pavillion |
| 259 | Construction Management and Engineering C3 | Chancellor's |
| 261 | Biological Sciences Teaching Laboratories D4 | Health and Life Sciences |
| 261 | Cole Museum of Zoology D4 | Health and Life Sciences |
| 261 | Health and Life Sciences D4 | Health and Life Sciences |
| 295 | Tennis Dome B3 | TennisPark |
| 800 | Astroturf Pitch B3 | Astroturf Pitch |
| N15 | Health and Dental Centre | Health and Dental Centre |

Catering venues

Cafés

| | | |
|-----|--------------------------------|-------------------------------|
| 1 | The Breakfast Box C3 | Edith Morley |
| 2 | The Café C4 | Library |
| 26 | Dol.cHe Vita C4 | Palmer |
| 39 | Eat at SportsPark B2 | SportsPark |
| 54 | Fusion Café C5 | Science and Technology Centre |
| 59 | Agriculture snack bar D6 | Agriculture |
| 71 | ICMA Centre Café Bar B3 | ICMA |
| 138 | Henley Business School Café C3 | Henley Business School |
| 201 | Eat at Enterprise C6 | Reading Enterprise Centre |
| 261 | Café Trilobite D4 | Health and Life Sciences |

Food and bar outlets

| | | |
|-----|--------------------------------|-------------------|
| 7 | Eat at the Square C4 | Eat at the Square |
| 8 | Eat and Drink at Park House C4 | Park House |
| 202 | Park Eat B3 | Park Eat |

Restaurants

| | | |
|---|----------------|------------|
| 8 | Blandford's C4 | Park House |
|---|----------------|------------|

WHITEKNIGHTS MAP KEY (BUILDING)

| No. | Name and grid ref | Building | No. | Name and grid ref | Building | No. | Name and grid ref | Building | No. | Name and grid ref | Building |
|-----|------------------------|--|-----|--------------------------|---|-----|---|--|-----|------------------------------------|--|
| 59 | Agriculture | Agriculture, Policy and Development D6 | 1 | Edith Morley | Humanities and Social Sciences (Edith Morley) C3 | 3 | JJ Thomson | Technologies for Sustainable Built Environments Centre (TSBE) D4 | 295 | TennisPark | Tennis Dome B3 |
| 59 | Agriculture | Centre for Agricultural Strategy D6 | 1 | Edith Morley | In-session English Support Programme (ISLI) C3 | 2 | Library | IT Service Desk C4 | 48 | The Allen Laboratory | Allen Laboratory C4 |
| 59 | Agriculture | Centre for Agri-Environmental Research D6 | 1 | Edith Morley | ISLI (International Study and Language Institute) C3 | 2 | Library | Library C4 | 46 | The Lord Zuckerman Research Centre | Reading Scientific Services Ltd (RSSL) D4 |
| 59 | Agriculture | Crop Protection Unit D6 | 1 | Edith Morley | Philosophy C3 | 2 | Library | Maths Support C4 | 20 | TOB 1 | Art C6 |
| 59 | Agriculture | Farm Management Unit D6 | 1 | Edith Morley | Politics and International Relations C3 | 2 | Library | Study Advice C4 | 21 | TOB 2 | Design and Print Studio C6 |
| 59 | Agriculture | Graduate Institute of International Development and Applied Economics D6 | 1 | Edith Morley | Support Centre C4 | 4 | Mathematics and Digital Technology Services | Digital Technology Services D4 | 21 | TOB 2 | National Centre for Biotechnology Education C6 |
| 59 | Agriculture | Support Centre D6 | 1 | Edith Morley | Ure Museum of Greek Archaeology C4 | 4 | Mathematics and Digital Technology Services | Mathematics and Statistics D4 | 76 | TOB 2 | Social Club (Employees) C6 |
| 59 | Agriculture | Veterinary Epidemiology and Economic Research Unit (VEERU) D6 | 210 | Energy Centre | Energy Centre D3 | 49 | Miller | Applicant Engagement C3 | 21 | TOB 2 | Study@TOB2 C6 |
| 59 | Agriculture | Walker Institute for Climate System Research D6 | 54 | Erleigh House | Berkshire Healthcare NHS Foundation Trust (BHFT) C5 | 49 | Miller | Department of Languages and Cultures C3 | 21 | TOB 2 | Typography and Graphic Communication C6 |
| 74 | Archaeology | Archaeology D4 | 50 | Estates | Estates B3 | 49 | Miller | Events C3 | 33 | URS | Study Space C3 |
| 37 | Archway Lodge | Muslim Centre C3 | 50 | Estates | Grounds Maintenance Office B3 | 49 | Miller | Global Recruitment & Admissions C3 | 5 | Wager | Archaeology, Geography and Environmental Sciences (SAGES) D3 |
| 800 | Astroturf Pitch | Astroturf Pitch B3 | 50 | Estates | Health and Safety Services B3 | 49 | Miller | Miller C3 | 5 | Wager | Wager D3 |
| 10 | Blandford Lodge | Blandford Lodge C3 | 34 | Estates | Grounds Maintenance Yard | 49 | Miller | Procurement C3 | 27 | Whiteknights House | Corporate Communications C3 |
| 10 | Blandford Lodge | Centre for Quality Support and Development (CQSD) C3 | 84 | Foxhill House | Foxhill House A4 | 49 | Miller | Student Recruitment and Outreach C3 | 27 | Whiteknights House | Finance C3 |
| 10 | Blandford Lodge | Teaching and Learning Deans' Office C3 | 84 | Foxhill House | Law A4 | 49 | Miller | Students in Schools C3 | 27 | Whiteknights House | Human Resources C3 |
| 58 | Brian Hoskins | Meteorology D4 | 84 | Foxhill House | Support Centre A4 | 195 | Minghella Studios | Film, Theatre and Television C4 | 27 | Whiteknights House | Insurance Office C3 |
| 58 | Brian Hoskins | National Centre for Earth Observation D5 | 31 | Harborne | Biological Sciences D4 | 195 | Minghella Studios | Minghella C4 | 27 | Whiteknights House | Knowledge Transfer Centre C3 |
| 135 | Carrington | Accommodation Office C4 | 31 | Harborne | Harborne D4 | 196 | Nursery | Nursery C4 | 27 | Whiteknights House | Mail Shop C3 |
| 135 | Carrington | Careers, Placement and Experience Centre C4 | 47 | Harry Nursten | Food and Nutritional Sciences D4 | 9 | Old Whiteknights House | Graduate School C3 | 27 | Whiteknights House | Pensions Office C3 |
| 135 | Carrington | Carrington C4 | 47 | Harry Nursten | Pharmacy D4 | 26 | Palmer | Palmer C4 | 27 | Whiteknights House | Postal Services C3 |
| 135 | Carrington | Counselling and Wellbeing C4 | 56 | Harry Pitt | Centre for Integrative Neuroscience and Neurodynamics (CINN) C6 | 8 | Park House | Catering, Hotel and Conference Services C4 | 27 | Whiteknights House | Receipts Office C3 |
| 135 | Carrington | Disability Advisory Service C4 | 56 | Harry Pitt | ESSC (Environmental Systems Science Centre) C6 | 8 | Park House | Meadow Suite C4 | 27 | Whiteknights House | Research and Enterprise C3 |
| 135 | Carrington | International Student Advice C4 | 56 | Harry Pitt | Harry Pitt C6 | 8 | Park House | Park House C4 | 27 | Whiteknights House | Research HQ C3 |
| 135 | Carrington | Job Shop (students) C4 | N15 | Health and Dental Centre | Health and Dental Centre | 8 | Park House | Park House C4 | 27 | Whiteknights House | Security Office C3 |
| 135 | Carrington | Peer Support C4 | 261 | Health and Life Sciences | Biological Sciences Teaching Laboratories D4 | 8 | Park House | Senior Common Room C4 | 27 | Whiteknights House | Vice-Chancellor's Office C3 |
| 135 | Carrington | Room Bookings and Timetabling C4 | 261 | Health and Life Sciences | Cole Museum of Zoology D4 | 8 | Park House | Venue Reading C4 | 27 | Whiteknights House | Whiteknights House C3 |
| 135 | Carrington | Student Financial Support Team C4 | 261 | Health and Life Sciences | Health and Life Sciences D4 | 40 | Park House Lodge | Chaplaincy Centre C4 | | | |
| 135 | Carrington | Student Helpdesk Team C4 | 138 | Henley Business School | Centre for Entrepreneurship C3 | 32 | Philip Lyle | Biological Sciences D4 | | | |
| 135 | Carrington | Student Services Centre C4 | 138 | Henley Business School | Henley Business School C3 | 32 | Philip Lyle | Institute for Environmental Analytics D4 | | | |
| 55 | Cedars Hotel | Cedars Hotel C4 | 138 | Henley Business School | Informatics Research Centre C3 | 38 | Polly Vacher | Biomedical Engineering D4 | | | |
| 55 | Cedars Hotel | Co-Op Supermarket C4 | 138 | Henley Business School | Management (School of) C3 | 38 | Polly Vacher | Computer Science D4 | | | |
| 186 | Central Kitchen | Central Kitchen | 138 | Henley Business School | Reading Real Estate Foundation C3 | 62 | Psychology | Charlie Waller Institute D6 | | | |
| 259 | Chancellor's | Construction Management and Engineering C3 | 138 | Henley Business School | Real Estate and Planning C3 | 62 | Psychology | Clinical Language Sciences D6 | | | |
| 6 | Chemistry and Pharmacy | Chemistry D4 | 118 | Hopkins | Biological Sciences D4 | 62 | Psychology | Psychology and Clinical Language Sciences D6 | | | |
| 6 | Chemistry and Pharmacy | Pharmacy D4 | 118 | Hopkins | Pharmacy D4 | 62 | Psychology | Speech and Language Therapy Clinic D6 | | | |
| 1 | Edith Morley | Classics C4 | 71 | ICMA Centre | ICMA Centre B3 | 201 | Reading Enterprise Centre | Southern Universities Management Services (SUMS) C6 | | | |
| 1 | Edith Morley | Economics C3 | 3 | JJ Thomson | Chemical Analysis Facility (CAF) D4 | 201 | Reading Enterprise Centre | Southern Universities Purchasing Consortium (SUPC) C6 | | | |
| 1 | Edith Morley | English Language and Applied Linguistics C3 | 3 | JJ Thomson | Electron Microscopy Laboratory (EML) D4 | 201 | Reading Enterprise Centre | Reading Enterprise Centre C6 | | | |
| 1 | Edith Morley | English Literature C3 | 3 | JJ Thomson | Examinations and Graduation Office D4 | 70 | Russell | Russell C3 | | | |
| 1 | Edith Morley | Erasmus & Study Abroad (ESA0) C3 | 3 | JJ Thomson | JJ Thomson D4 | 39 | SportsPark | SportsPark B2 | | | |
| 1 | Edith Morley | History C3 | 3 | JJ Thomson | Pharmacy D4 | 253 | SportsPark Pavillion | SportsPark Pavillion B2 | | | |
| | | | 3 | JJ Thomson | Support Centre D4 | 29 | Students' Union | 3sixty bar C4 | | | |
| | | | 3 | JJ Thomson | | 29 | Students' Union Hub | Students' Union C4 | | | |

Catering venues

Cafés

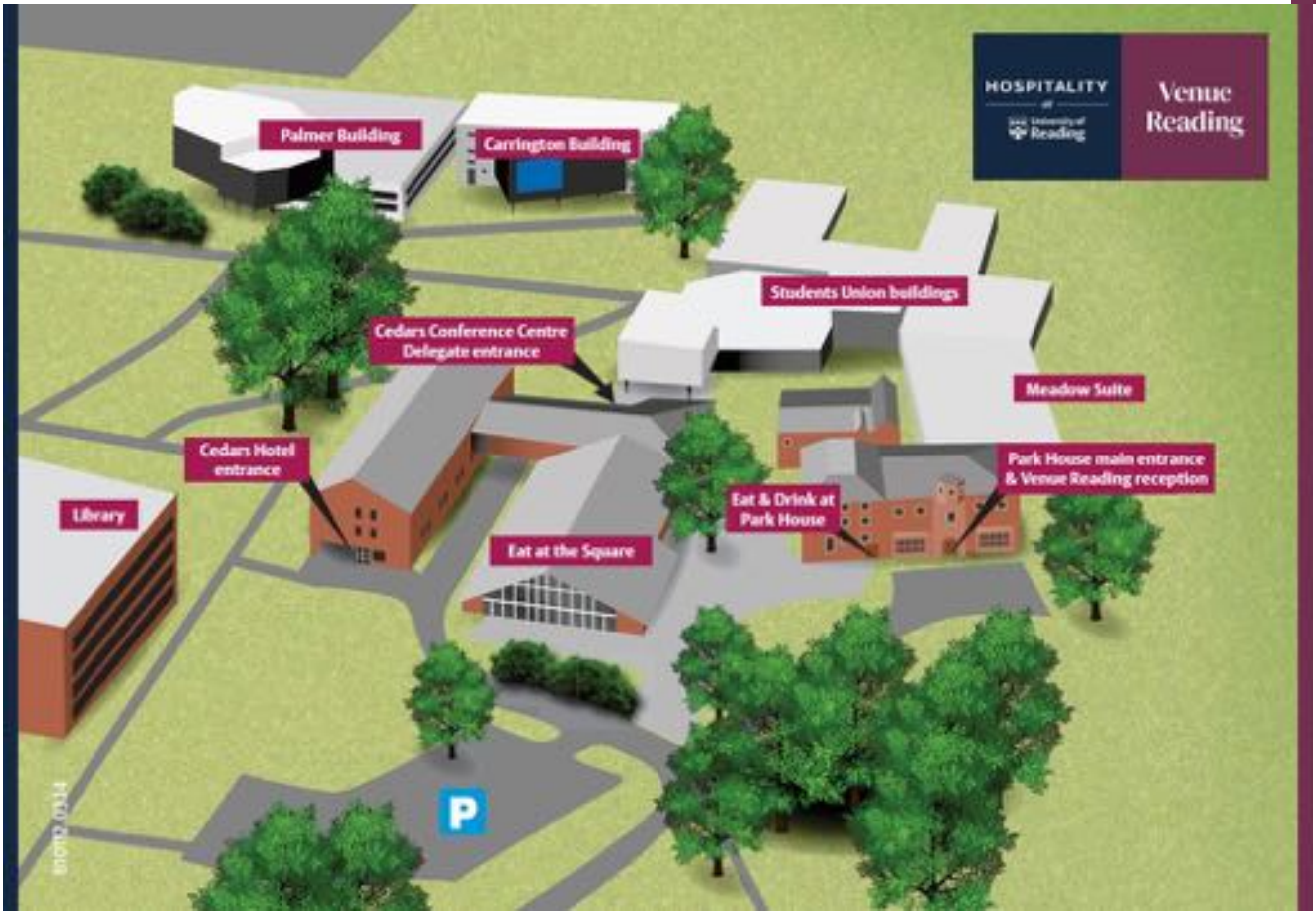
| | | |
|-----|-------------------------------|--------------------------------|
| 59 | Agriculture | Agriculture snack bar D6 |
| 1 | Edith Morley | The Breakfast Box C3 |
| 261 | Health and Life Sciences | Café Trilobite D4 |
| 138 | Henley Business School | Henley Business School Café C3 |
| 2 | Library | The Café C4 |
| 26 | Palmer | DoL.cHe Vita C4 |
| 201 | Reading Enterprise Centre | Eat at Enterprise C6 |
| 39 | SportsPark | Eat at SportsPark B2 |
| 54 | Science and Technology Centre | Fusion Café C5 |
| 71 | ICMA | ICMA Centre Café Bar B3 |

Food and bar outlets

| | | |
|-----|-------------------|--------------------------------|
| 7 | Eat at the Square | Eat at the Square C4 |
| 8 | Park House | Eat and Drink at Park House C4 |
| 202 | Park Eat | Park Eat B3 |

Restaurants

| | | |
|---|------------|----------------|
| 8 | Park House | Blandford's C4 |
|---|------------|----------------|



University Accommodation **WEEK PASS**



 University of
Reading
SportsPark

£10
for 7 days



Scan here to see our
Class Timetable



Join now

Full range of cardio, strength, functional
gym equipment and unlimited exercise
classes!

The SportsPark is offering a week
pass for anyone staying short term
on campus. Here's how to get it:

- 1** Visit SportsPark reception
- 2** Provide proof of stay
- 3** Pay £10 for 7 days and enjoy

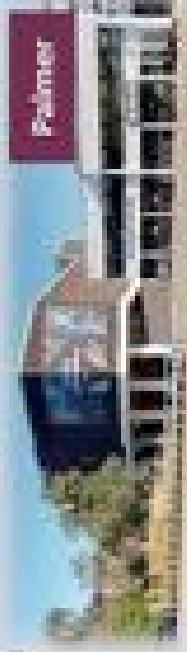
@uonsportspark



sport@reading.ac.uk

(0118) 378 8799

Palmer Building Map



WHITEKNIGHTS CAMPUS



Venue Readings