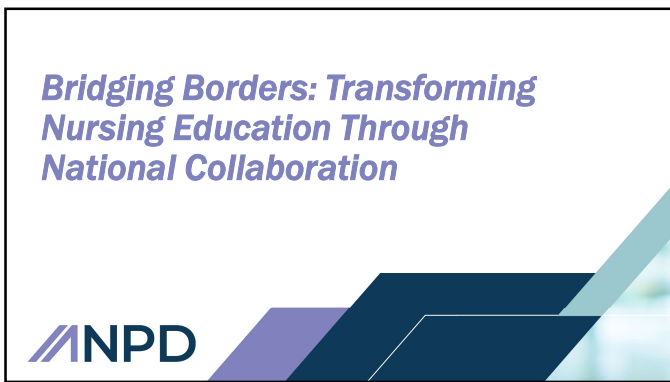
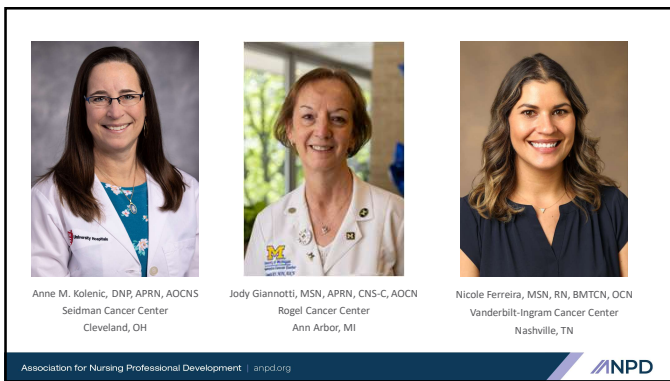




1



2



3

Additional Contributors

- Judy Johnson, MSN, RN, OCN, BMTCN
 - Vanderbilt-Ingram Cancer Center
 - Nashville, TN
- Stella Dike, PhD, RN, OCN
 - MD Anderson Cancer Center
 - Houston, TX
- Karin Elkins, MSN, RN, NPD-BC, OCN
 - Medical University of South Carolina
 - Charleston, SC

Association for Nursing Professional Development | anpd.org



4



5

History and Background

- Identifying the need:
 - Course requirements for our institutions based on specialty nursing needs
 - Change in national course format
 - Increased costs to individual institutions
 - Online vs face-to-face course
- Gathering participating organizations:
 - Many NCI institutions identified same concerns
- Goal: Develop a common course to utilize across all participating organizations

Association for Nursing Professional Development | anpd.org



6

Initial Participating Organizations

- City of Hope
- Dana Farber Brigham and Women's Cancer Center
- Duke Cancer Institute*
- Fox Chase Cancer Center*
- Karmanos Cancer Center*
- M.D. Anderson Cancer Center*
- New York-Presbyterian, Columbia University Irving Medical Center*
- Oregon Health & Sciences University, Knight Cancer Institute*
- Smilow Cancer Hospital*
- Trinitas Comprehensive Cancer Center*
- University of Michigan Rogel Cancer Center *
- Vanderbilt-Ingram Cancer Center*

Association for Nursing Professional Development | anpd.org



7

Getting Started

- Weekly meetings
- Development of course outline
- Assignment of course work across participating organizations
- Shared work vs individuality
- Establishing common platforms for shared work
- Timelines and goals
- Course contact hours

Association for Nursing Professional Development | anpd.org



8

Course Components

- Course agenda
- Presentations with speaker notes
- Course exam
- Participant guide
- Facilitator guide
- Course evaluation

Association for Nursing Professional Development | anpd.org



9

Leveraging Strengths

- Strengths of Individual Members
 - Various oncology sub-specialty expertise
 - Proficiency with technology- "tech savvy" members
 - Proofreading and visual formatting gurus
- Strengths of Collaborative Institutions
 - Access to collaboration platforms- Microsoft Teams and OneDrive
 - Shared Learning Management System- Canvas
 - Legal resources

Association for Nursing Professional Development | anpd.org



10

Legal Considerations

MEMORANDUM OF UNDERSTANDING

- The original MOU was developed in 2014 at the initiation of the collaborative team. It has been reviewed and updated this year with new content and additional members.

COPYRIGHT

- We ensure that all images and tables used in the presentations have copyright permission. We have a standardized template for copyright permission

Association for Nursing Professional Development | anpd.org



11

Data and Evaluation

- Post-course evaluation data
 - Collaborative evaluation specific to course content and design
 - Test analysis
 - Additional contact hour evaluation per each institution
- Aggregate test and course evaluation results are used to revise the course annually
- Course evaluation data are presented to the nurse executive meeting biannually

Association for Nursing Professional Development | anpd.org



12

Benefits of a National Collaborative

- Financial benefits
- Face-to-face course vs online
- Keeping course updated and aligned with current evidence-based practice
- Shared workload “lightens the load”
- Working with experts from across the country

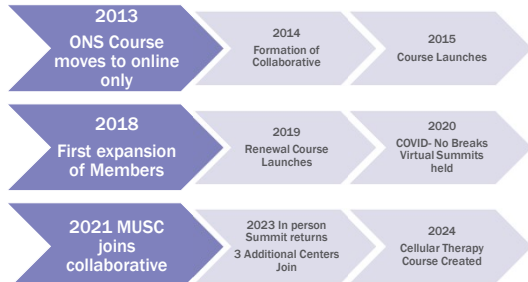
13

Engaging New Organizations

- MUSC Experience
 - One RN made the difference
 - Leadership and stakeholders
 - Engagement
 - Commitment
- NCI Collaborative Mentor
 - Provide examples
 - Consultant for process
 - Support with implementation

14

NCI Education Collaborative Timeline



15

Participating Organizations

- Barnes Jewish Hospital, Siteman Cancer Center (2023)
- City of Hope*
- MD Anderson Cancer Center*
- Medical University of South Carolina (2021)
- New York Presbyterian-Columbia*
- OHSU Knight Cancer Institute*
- Roswell Park Comprehensive Cancer Center (2018)
- University of Michigan Rogel Cancer Center*
- University Hospitals Seidman Cancer Center (2018)
- University of Utah, Huntsman Cancer Institute (2023)
- Vanderbilt-Ingram Cancer Center*
- Virginia Commonwealth University, Massey Comprehensive Cancer Center (2023)

Organizations no longer in the Collaborative:

- ❖ Dana Farber Brigham and Women's Cancer Center*
- ❖ Duke Cancer Institute*
- ❖ Fox Chase Cancer Center*
- ❖ Karmanos Cancer Center*
- ❖ Smilow Cancer Hospital*
- ❖ Trinitas Comprehensive Cancer Center

* Denotes original participating member

Association for Nursing Professional Development | anpd.org



16

Summary and Key Takeaways

- Identify a common need in specialty area (new guidelines, course, etc.)
- Identify stakeholders and leadership to support (other organizations, schools of nursing, etc.)
- Engage nurse educators, MSN-prepared leadership to develop and implement plan
- Create means to cover legal concerns
- Develop a sustainability plan

Association for Nursing Professional Development | anpd.org



17



18
