

Patient Navigators: Facilitating Improvements in the Kidney Transplant Journey

Introduction

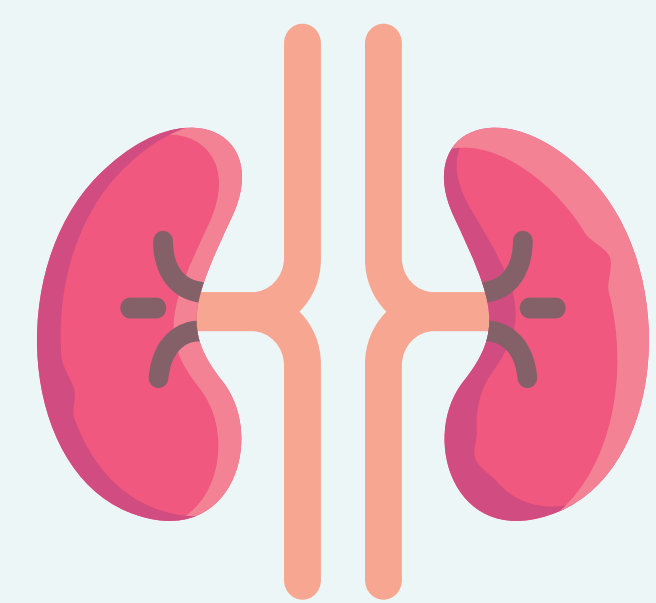
As part of the Advancing American Kidney Health Initiative, the Centers for Medicare & Medicaid Services (CMS) created the End Stage Renal Disease (ESRD) Transplant Choices Learning Collaborative (ETCLC). The collaborative includes kidney patients and donor family members working with transplant providers and Organ Procurement Organizations (OPOs) to increase the number of patients who are transplanted.

Objective

Engage the people living with kidney disease and donor family members to share their lived experiences to support transplant hospitals, donor hospitals, and organ procurement organizations as they develop initiatives to improve the number of patients who seek placement on the kidney transplant waitlist, increase patient knowledge of high Kidney Donor Profile Index (KDPI), and improve the number of patients who accept and receive a kidney transplant.

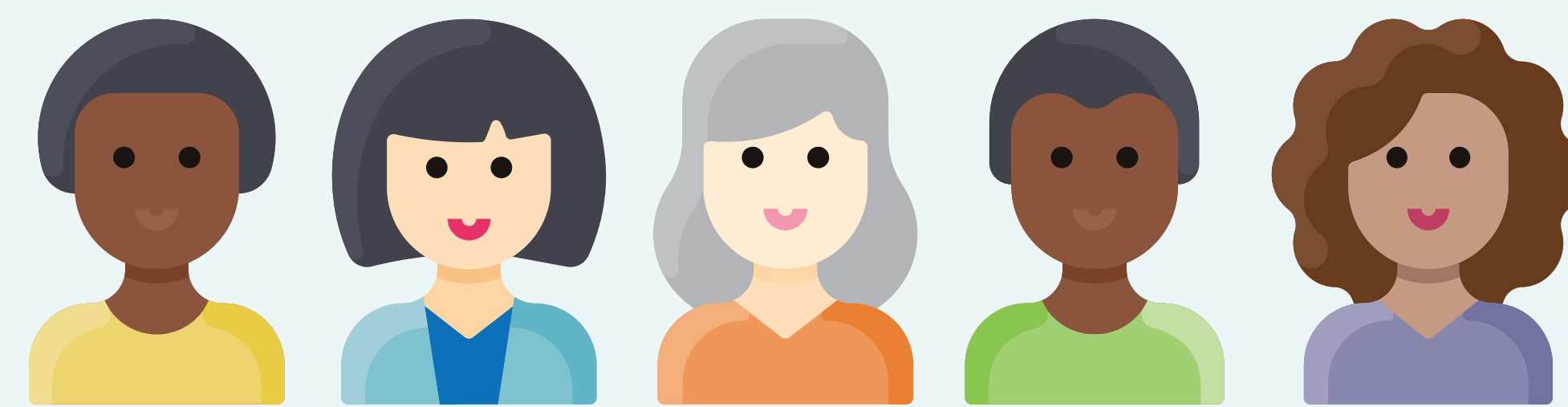
Who's Involved

These individuals make up the ETCLC Patient and Donor Family Member Representatives (PFRs):



1

Dialysis Patient on the Kidney Transplant Waitlist



5

Kidney Donor Family Members



20

Kidney Transplant Recipients



3

ETCLC Patient National Faculty Members

Methods

- PFRs participation in Pacing Events.
- PFRs sharing the work of the ETCLC during Collaboration Calls with the ESRD National Coordinating Center (NCC) and the ESRD Networks.
- Kidney transplant recipients leading Case Study Events.
- Create engagement tools for ETCLC Quality Improvement Teams.



What's Ahead?

The ETCLC PFRs will develop tools and resources that are designed to reach people where they are in their kidney transplant journey. Resources in development include:

- Kidney Transplant Testimonial (Video)
- Better Than Dialysis—Understanding What Is a High KDPI Kidney
- The Pros and Cons of Kidney Transplantation

