



Federal Aviation Administration

Visitor Guide for William J. Hughes Technical Center Cyber Rodeo Event

AUGUST 17, 2023

Safeguarding Aviation in the Digital Age



Building 300 at Tech Center

ALL VISITORS

Visitors must be registered to attend the 2023 WJHTC Cyber Rodeo on the following link <https://acicyberrodeo2023.vfairs.com/>, produce current government-issued photo identification that has an expiration date and must check in to the registration booth to receive a Cyber Rodeo Badge.

REGISTRATION FOR EVENT:

Visitors that want to attend the 2023 WJHTC Cyber Rodeo must register by going to the following link <https://acicyberrodeo2023.vfairs.com/>. To register select the FAA Technical Center Event click on the Register button.

HOTEL RECOMMENDATIONS

Below are recommendations of hotels in the area for your convenience.

HOTELS NEAR FAA WILLIAM J. HUGHES TECHNICAL CENTER:

ABSECON AREA:

3.5 stars - Country Inn & Suites by Radisson, Absecon

ATLANTIC CITY AREA:

4.4 stars - Fairfield Inn & Suites by Marriott Atlantic City, 1.8 miles

4.4 stars – Holiday Inn Express & Suites Atlantic City Area, 2.5 miles

4.0 stars – Homewood Suites by Hilton Atlantic City/Egg Harbor Township, 2.6 miles (Eco-certified)

EGG HARBOR TOWNSHIP AREA:

4.3 stars – Residence Inn Egg Harbor Township

4.2 stars – Hampton Inn Egg Harbor Township, 3.3 miles (Eco-certified)

AGENDA

The event will consist of Lab Tours and Demonstrations:

LAB TOURS (2 for each lab, one in the morning and one in the afternoon)

STARS

ERAM

SECTR (will need prior clearance)

I2F Facility

Spectrum Test Vehicles

Data Communications Lab

DEMONSTRATIONS:

Cyber Test Facility (CyTF)

ADSB and Radar Test Tools

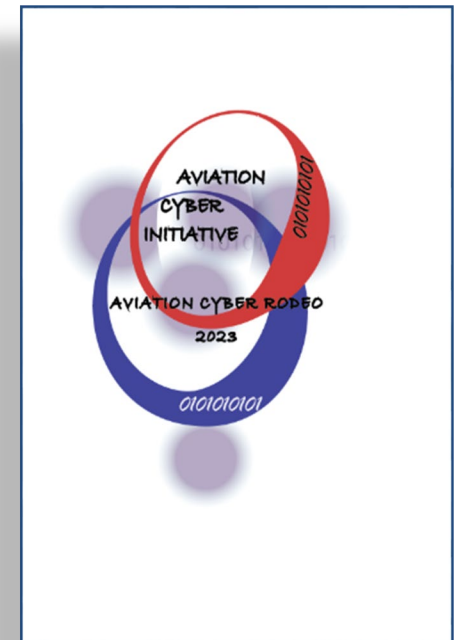
BOOTHS

ACG

FAA Technology Transfer Program

Story Boards

NFACTOR Resource Guide



GPS DIRECTIONS TO THE TECHNICAL CENTER

- Set your GPS to the nearby Atlantic City International Airport. (ACY). The FAA William J. Hughes Technical Center is co-located with the Atlantic City Airport and is near the Atlantic City Expressway exit #9.

FROM NEW YORK CITY AND NORTHERN NJ FROM PARKWAY

From Exit 44 South: Take Garden State Parkway (toll) south to Exit 44. Make right turn and stay on county route 575 for 4.7 miles (cross US-30) to fourth traffic signal. At county route 563 (Tilton Road) turn left and go about 2.5 miles to traffic circle. Take the 4th exit onto Access Rd/Amelia Earhart Blvd. Continue to follow Amelia Earhart Blvd to the William J. Hughes Technical Center.

From Exit 38 South - Atlantic City Expressway: Take Garden State Parkway (toll) south to exit 44 Garden State Parkway (toll) to Exit 38, off right (Philadelphia via Atlantic City Expressway) proceed to exit 9W (toll) turn right on county route 646 (Delilah Road), proceed to traffic circle. Take the 3rd exit onto Access Rd/Amelia Earhart Blvd. Continue to follow Amelia Earhart Blvd to the William J. Hughes Technical Center.

FROM WASHINGTON, D.C./ BALTIMORE, MD

Take I-95 North to I-295 and cross the Delaware Memorial Bridge (toll). After crossing bridge proceed east on US-40 (follow signs for Atlantic City). Continue for about 50 miles to intersection of US-322 (Black Horse Pike). A large shopping center and the Atlantic City Race Course will be on your left. Proceed about one mile on US-40/322, turn left on county route 646 (Delilah Road) and follow signs to FAA Technical Center and Atlantic City International Airport via Delilah Road. Continue for about 2.5 miles to traffic circle. Take the 3rd exit onto Access Rd/Amelia Earhart Blvd. Continue to follow Amelia Earhart Blvd to the William J. Hughes Technical Center.

FROM PHILADELPHIA, PENNSYLVANIA/CAMDEN, NJ

Take the Walt Whitman bridge and/or route 42 (North-South Freeway) to the Atlantic City Expressway (toll). Depart expressway at Exit 9E, make left at end of exit ramp on county route 646, (Delilah Road) and proceed for .5 mile to traffic circle. Take the 3rd exit onto Access Rd/Amelia Earhart Blvd. Continue to follow Amelia Earhart Blvd to the William J. Hughes Technical Center.

FROM NORTHEAST PA/TRENTON-PRINCETON, NJ

Take NJ Route 206 to Hammonton, NJ and intercept US-30 east for about 13 miles to Route #563 (Tilton Road). Continue on Tilton Rd to the traffic circle. Take the 4th exit onto Access Rd/Amelia Earhart Blvd. Continue to follow Amelia Earhart Blvd to the William J. Hughes Technical Center.

FROM CAPE MAY, NJ AND POINTS SOUTH VIA CAPE MAY-LEWES, DELAWARE FERRY

Take Garden State Parkway north to Exit 38. Exit off ramp marked Philadelphia via Atlantic City Expressway, proceed to Expressway Exit 9W (toll) off right to county route 646 (Delilah Road), turn right, proceed to traffic circle. Take the 3rd exit onto Access Rd/Amelia Earhart Blvd. Continue to follow Amelia Earhart Blvd to the William J. Hughes Technical Center.

FROM ATLANTIC CITY VIA US-30 (WHITE HORSE PIKE)

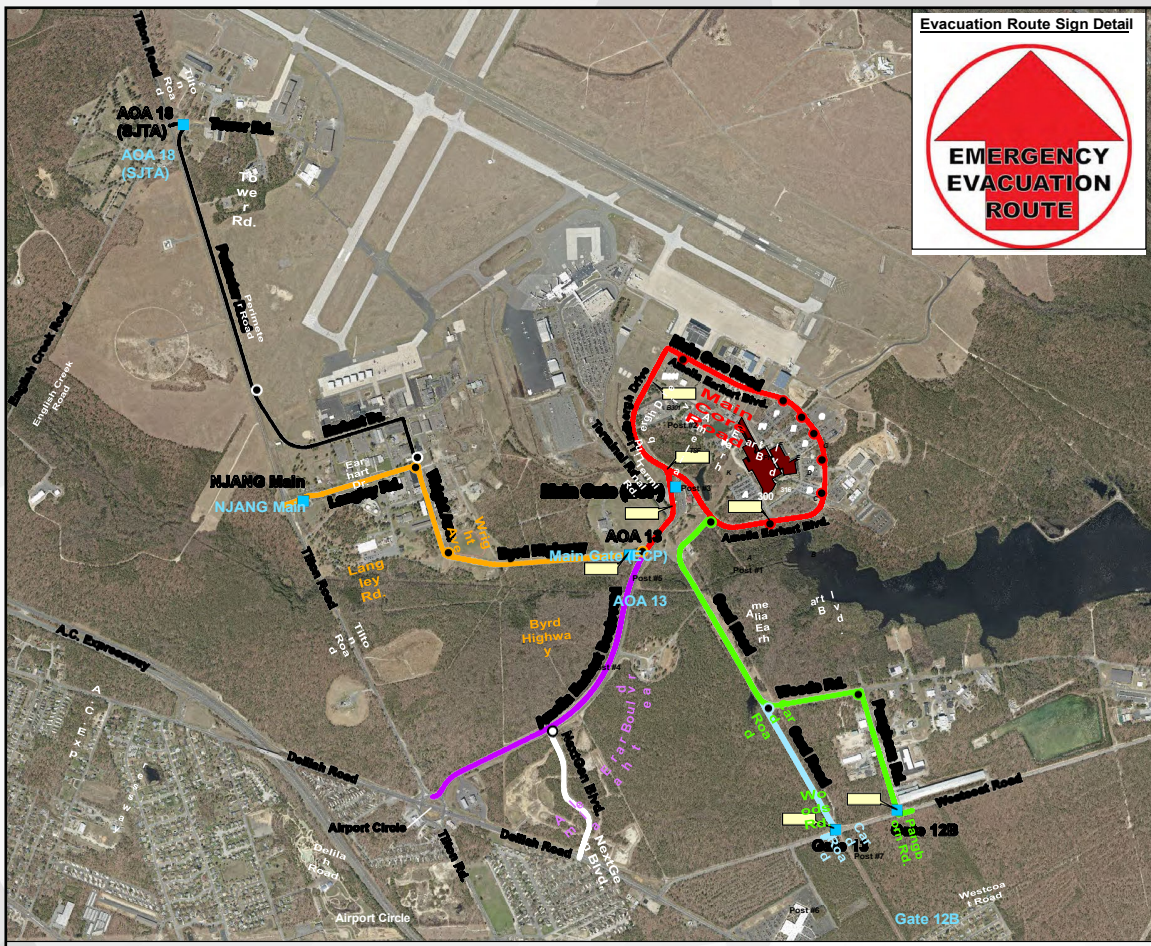
Travel west on US-30 then take right turn ramp to county route 646 (Delilah Road). Go 5 miles to traffic circle. Take 1st exit onto Access Rd/Amelia Earhart Blvd. Continue to follow Amelia Earhart Blvd to the William J. Hughes Technical Center.

FROM ATLANTIC CITY VIA EXPRESSWAY

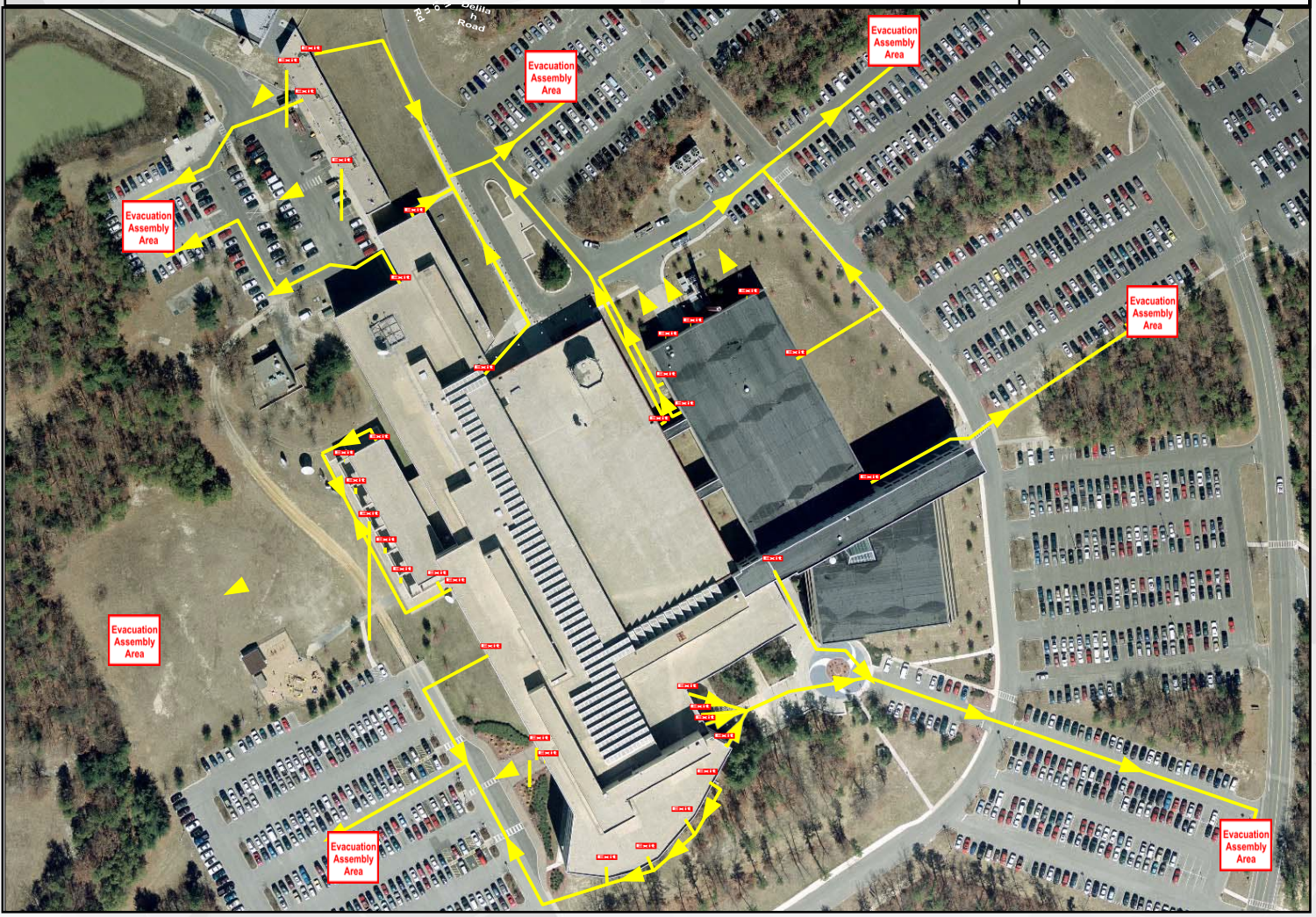
Enter the Atlantic City Expressway via Arkansas and Atlantic or Arctic Avenues (near Convention Hall). Proceed through the toll plaza and proceed to Expressway Exit 9W (toll) off right to county route 646 (Delilah Road), turn right, proceed to traffic circle. Take the 3rd exit onto Access Rd/Amelia Earhart Blvd. Continue to follow Amelia

MAPS AND EXACUATION ROUTES

Chubb_FAA_VisitorTrifold.indd 2



- Map Legend**
- Evacuation Route Sign Location
 - Gates along Evacuation Routes
 - Main Core Road
 - Red Route
 - Primary Exit Routes
 - Orange Route
 - Green Route
 - Blue Route
 - Purple Route
 - White Route
 - Alternate Exit Routes
 - Black Route
 - Buildings 300 & 316



6/28/21 8:01 AM